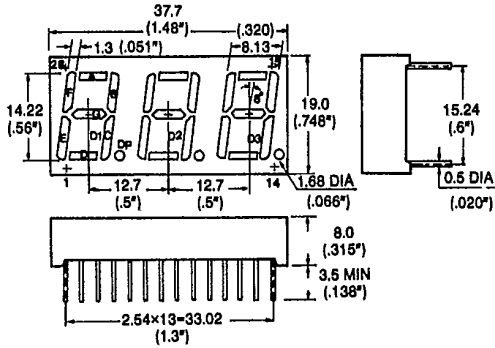


# 3&4 DIGIT DISPLAY

T-41-33

## .56" DIGIT SIZE

PART NO.	PEAK WAVE-LENGTH $\lambda_p$ (nm)	EMITTED COLOR	MAXIMUM RATINGS					OPTO-ELECTRICAL CHARACTERISTICS							Pin-Out
			$I_F$ (mA)	$V_R$ (V)	$P_D$ (mW)	$T_{opr}$ (°C)	$T_{stg}$ (°C)	$V_F$ (V)			$I_R$ ( $\mu$ A)		$I_y$ ( $\mu$ cd)		
								typ.	max.	@ mA	max.	@ $V_R$	typ. per seg.	@ mA	
MTN1356-11A	655	Red	25	3	100	-40 ~ 85	-55 ~ 100	1.7	2.0	20	100	3	450	10	1
MTN2356-11A	567	Green	25	5	85	-40 ~ 85	-55 ~ 100	2.1	3.0	20	100	5	1650	10	1
MTN4356-11A	635	Orange	25	5	85	-40 ~ 85	-55 ~ 100	2.1	3.0	20	100	5	1800	10	1
MTN4356R-11A	635	Hi-Eff Red	25	5	85	-40 ~ 85	-55 ~ 100	2.1	3.0	20	100	5	1800	10	1
MTN1356-11C	655	Red	25	3	100	-40 ~ 85	-55 ~ 100	1.7	2.0	20	100	3	450	10	2
MTN2356-11C	567	Green	25	5	85	-40 ~ 85	-55 ~ 100	2.1	3.0	20	100	5	1650	10	2
MTN4356-11C	635	Orange	25	5	85	-40 ~ 85	-55 ~ 100	2.1	3.0	20	100	5	1800	10	2
MTN4356R-11C	635	Hi-Eff Red	25	5	85	-40 ~ 85	-55 ~ 100	2.1	3.0	20	100	5	1800	10	2



### PINOUT 1

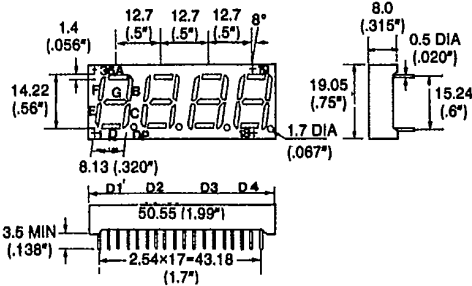
- 1. E SEG CATHODE (D1)
- 2. D SEG CATHODE (D1)
- 3. C SEG CATHODE (D1)
- 4. DP SEG CATHODE (D1)
- 5. E SEG CATHODE (D2)
- 6. D SEG CATHODE (D2)
- 7. C SEG CATHODE (D2)
- 8. DP SEG CATHODE (D2)
- 9. D1 COMMON ANODE
- 10. E SEG CATHODE (D3)
- 11. D SEG CATHODE (D3)
- 12. C SEG CATHODE (D3)
- 13. DP SEG CATHODE (D3)
- 14. B SEG CATHODE (D3)

### PINOUT 2

- 1. E SEG ANODE (D1)
- 2. D SEG ANODE (D1)
- 3. D1 COMMON CATHODE
- 4. C SEG ANODE (D1)
- 5. DP ANODE (D1)
- 6. E SEG ANODE (D2)
- 7. D SEG ANODE (D2)
- 8. C SEG ANODE (D2)
- 9. DP ANODE (D2)
- 10. B SEG ANODE (D2)
- 11. D SEG ANODE (D3)
- 12. C SEG ANODE (D3)
- 13. DP SEG ANODE (D3)
- 14. G SEG ANODE (D3)
- 15. B SEG ANODE (D3)
- 16. A SEG ANODE (D3)
- 17. F SEG ANODE (D3)
- 18. D3 COMMON CATHODE
- 19. D2 COMMON ANODE
- 20. B SEG ANODE (D2)
- 21. A SEG ANODE (D2)
- 22. G SEG ANODE (D2)
- 23. F SEG ANODE (D2)
- 24. B SEG ANODE (D1)
- 25. A SEG ANODE (D1)
- 26. D1 COMMON CATHODE
- 27. F SEG ANODE (D1)
- 28. G SEG ANODE (D1)

## .56" DIGIT SIZE

PART NO.	PEAK WAVE-LENGTH $\lambda_p$ (nm)	EMITTED COLOR	MAXIMUM RATINGS					OPTO-ELECTRICAL CHARACTERISTICS							Pin-Out
			$I_F$ (mA)	$V_R$ (V)	$P_D$ (mW)	$T_{opr}$ (°C)	$T_{stg}$ (°C)	$V_F$ (V)			$I_R$ ( $\mu$ A)		$I_y$ ( $\mu$ cd)		
								typ.	max.	@ mA	max.	@ $V_R$	typ. per seg.	@ mA	
MTN1456-ASR	655	Red	25	3	100	-40 ~ 85	-55 ~ 100	1.7	2.0	20	100	3	450	10	1
MTN2456-AQ	567	Green	25	5	85	-40 ~ 85	-55 ~ 100	2.1	3.0	20	100	5	1650	10	1
MTN4456-AO	635	Orange	25	5	85	-40 ~ 85	-55 ~ 100	2.1	3.0	20	100	5	1800	10	1
MTN4456-AHR	635	Hi-Eff Red	25	5	85	-40 ~ 85	-55 ~ 100	2.1	3.0	20	100	5	1800	10	1
MTN1456-CSR	655	Red	25	3	100	-40 ~ 85	-55 ~ 100	1.7	2.0	20	100	3	450	10	2
MTN2456-CG	567	Green	25	5	85	-40 ~ 85	-55 ~ 100	2.1	3.0	20	100	5	1650	10	2
MTN4456-CO	635	Orange	25	5	85	-40 ~ 85	-55 ~ 100	2.1	3.0	20	100	5	1800	10	2
MTN4456-CHR	635	Hi-Eff Red	25	5	85	-40 ~ 85	-55 ~ 100	2.1	3.0	20	100	5	1800	10	2



### PINOUT 1

- 1. CATHODE E (D1)
- 2. CATHODE D (D1)
- 3. CATHODE C (D1)
- 4. CATHODE DP (D1)
- 5. CATHODE E (D2)
- 6. CATHODE D (D2)
- 7. CATHODE G (D2)
- 8. CATHODE C (D2)
- 9. CATHODE DP (D2)
- 10. CATHODE E (D3)
- 11. CATHODE D (D3)
- 12. CATHODE C (D3)
- 13. CATHODE DP (D3)
- 14. CATHODE E (D4)
- 15. CATHODE D (D4)
- 16. CATHODE G (D4)
- 17. CATHODE C (D4)
- 18. CATHODE DP (D4)

### PINOUT 2

- 1. ANODE E (D1)
- 2. ANODE D (D1)
- 3. ANODE C (D1)
- 4. ANODE DP (D1)
- 5. ANODE E (D2)
- 6. ANODE D (D2)
- 7. ANODE G (D2)
- 8. ANODE C (D2)
- 9. ANODE DP (D2)
- 10. ANODE E (D3)
- 11. ANODE D (D3)
- 12. ANODE C (D3)
- 13. ANODE DP (D3)
- 14. ANODE E (D4)
- 15. ANODE D (D4)
- 16. ANODE G (D4)
- 17. ANODE C (D4)
- 18. ANODE DP (D4)
- 19. ANODE B (D4)
- 20. ANODE A (D4)
- 21. ANODE F (D4)
- 22. D4 COMMON CATHODE
- 23. D3 COMMON CATHODE
- 24. ANODE B (D3)
- 25. ANODE A (D3)
- 26. ANODE G (D3)
- 27. ANODE F (D3)
- 28. ANODE B (D2)
- 29. ANODE A (D2)
- 30. ANODE F (D2)
- 31. D2 COMMON CATHODE
- 32. D1 COMMON CATHODE
- 33. ANODE B (D1)
- 34. ANODE A (D1)
- 35. ANODE G (D1)
- 36. ANODE F (D1)