

TD62382AP, TD62382F, TD62382AF

8CH LOW INPUT ACTIVE SINK DRIVER

The TD62382AP/F/AF are non-inverting transistor array which are comprised of eight Low saturation output stages and PNP input stages.

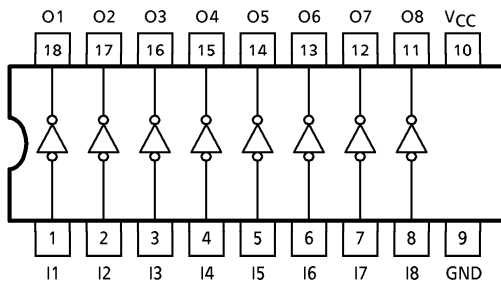
This device is low level input active driver and is suitable for operation with TTL, 5V CMOS and 5V Microprocessor which have sink current output drivers.

Applications include relay, hammer, lamp and LED display drivers.

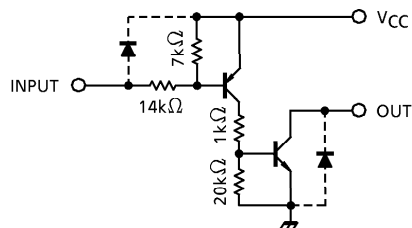
FEATURES

- Low saturation output 0.23V MAX. @ $I_{OUT} = 40\text{mA MAX.}$
- Output rating 35V MIN./50mA MAX. (TD62382F)
50V MIN./50mA MAX. (TD62382AP, TD62382AF)
- Input compatible with TTL and 5V CMOS
- Low level active inputs
- Standard supply voltage
- Package type-AP : DIP-18pin
- Package type-F, AF : SOP-18pin

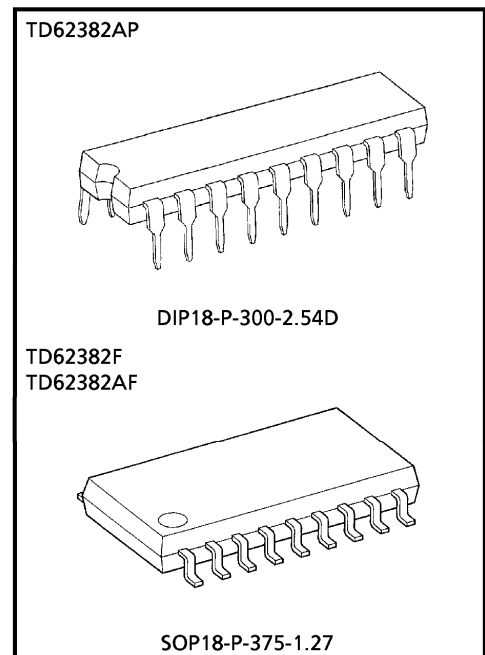
PIN CONNECTION (TOP VIEW)



SCHEMATICS (EACH DRIVER)



(Note) The input and output parasitic diodes cannot be used as clamp diodes.



Weight
 DIP18-P-300-2.54D : 1.47g (Typ.)
 SOP18-P-375-1.27 : 0.41g (Typ.)

961001EBA2

● TOSHIBA is continually working to improve the quality and the reliability of its products. Nevertheless, semiconductor devices in general can malfunction or fail due to their inherent electrical sensitivity and vulnerability to physical stress. It is the responsibility of the buyer, when utilizing TOSHIBA products, to observe standards of safety, and to avoid situations in which a malfunction or failure of a TOSHIBA product could cause loss of human life, bodily injury or damage to property. In developing your designs, please ensure that TOSHIBA products are used within specified operating ranges as set forth in the most recent products specifications. Also, please keep in mind the precautions and conditions set forth in the TOSHIBA Semiconductor Reliability Handbook.

MAXIMUM RATINGS (Ta = 25°C)

CHARACTERISTIC	SYMBOL	RATING	UNIT
Supply Voltage	V _{CC}	- 0.5~7.0	V
Output Sustaining Voltage	AP, AF F	V _{CE (SUS)}	- 0.5~50
			- 0.5~35
Output Current	I _{OUT}	50	mA / ch
Input Voltage	V _{IN}	- 22~V _{CC} + 0.5	V
Input Current	I _{IN}	10	mA
Power Dissipation	AP F, AF	P _{D (Note)}	1.47
			0.96
Operating Temperature	T _{opr}	- 40~85	°C
Storage Temperature	T _{stg}	- 55~150	°C

(Note) Delated above 25°C in the proportion of 11.7mW/°C (AP-Type), 7.7mW/°C (F, AF-Type).

RECOMMENDED OPERATING CONDITIONS (Ta = - 40~85°C)

CHARACTERISTIC	SYMBOL	CONDITION	MIN.	TYP.	MAX.	UNIT
Supply Voltage	V _{CC}	—	4.5	5.0	5.5	V
Output Sustaining Voltage	AP, AF F	V _{CE (SUS)}	—	0	—	50
			—	0	—	35
Output Current	AP AF, F	I _{OUT}	DC 1 Circuit	0	—	40
			8 Circuits	0	—	40
			8 Circuits	0	—	40
Input Voltage	Output On Output Off	V _{IN}	—	- 20	—	V _{CC}
		V _{IN (ON)}	—	- 20	—	V _{CC} - 3.5
		V _{IN (OFF)}	—	V _{CC} - 0.3	—	V _{CC} + 0.5
Power Dissipation	AP F, AF	P _D	—	—	—	0.52
			—	—	—	0.35

961001EBA2'

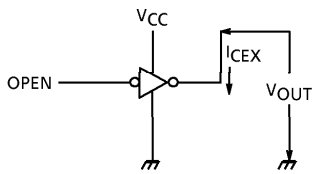
- The products described in this document are subject to foreign exchange and foreign trade control laws.
- The information contained herein is presented only as a guide for the applications of our products. No responsibility is assumed by TOSHIBA CORPORATION for any infringements of intellectual property or other rights of the third parties which may result from its use. No license is granted by implication or otherwise under any intellectual property or other rights of TOSHIBA CORPORATION or others.
- The information contained herein is subject to change without notice.

ELECTRICAL CHARACTERISTICS (Ta = 25°C)

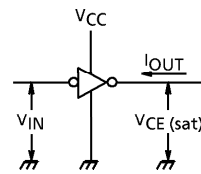
CHARACTERISTIC		SYMBOL	TEST CIR-CUIT	TEST CONDITION	MIN.	TYP.	MAX.	UNIT
Output Leakage Current		I _{CEX}	1	V _{CC} = 5.5V, I _{IN} = 0 V _{OUT} = 35V, Ta = 75°C	—	—	100	μA
Output Saturation Voltage		V _{CE (sat)}	2	V _{CC} = 4.5V, V _{IN} = 0.8V I _{OUT} = 40mA	—	—	0.23	V
Input Current	Output On	I _{IN (ON)}	3	V _{CC} = 5.5V, V _{IN} = 0.4V	—	-0.32	-0.45	mA
	Output Off	I _{IN (OFF)}	4	V _{CC} = 5.5V, V _{IN} = -20V	—	—	-2.6	
Input Voltage	Output On	V _{IN (ON)}	5	—	-20	—	V _{CC} - 3.5	V
	Output Off	I _{CC (OFF)}	6	V _{CC} = V _{IN} = 5.5V, Ta = 75°C	—	—	100	μA
Supply Current	Output On	I _{CC (ON)}	6	V _{CC} = 5.5V, V _{IN} = 0V	—	—	6	mA / ch
	Output Off	I _{CC (OFF)}	6	V _{CC} = V _{IN} = 5.5V, Ta = 75°C	—	—	100	
Turn-On Delay	AP, AF	t _{ON}	7	V _{CC} = 5V C _L = 15pF	—	—	V _{OUT} = 35V, R _L = 82Ω	μs
	F						V _{OUT} = 50V, R _L = 1kΩ	
Turn-Off Delay	AP, AF	t _{OFF}					V _{OUT} = 35V, R _L = 82Ω	
	F						V _{OUT} = 50V, R _L = 1kΩ	

TEST CIRCUIT

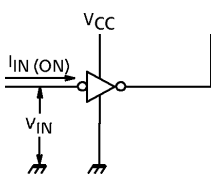
1. I_{CEX}



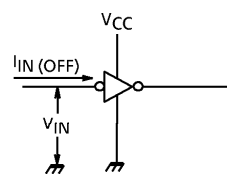
2. $V_{CE(sat)}$



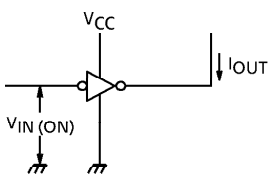
3. $I_{IN(ON)}$



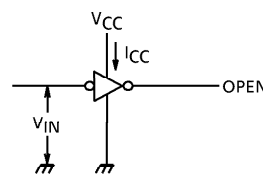
4. $I_{IN(OFF)}$



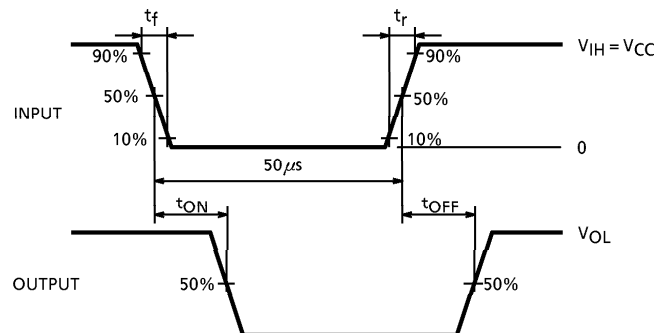
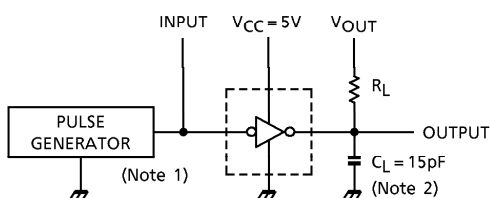
5. $V_{IN(ON)}$



6. I_{CC}



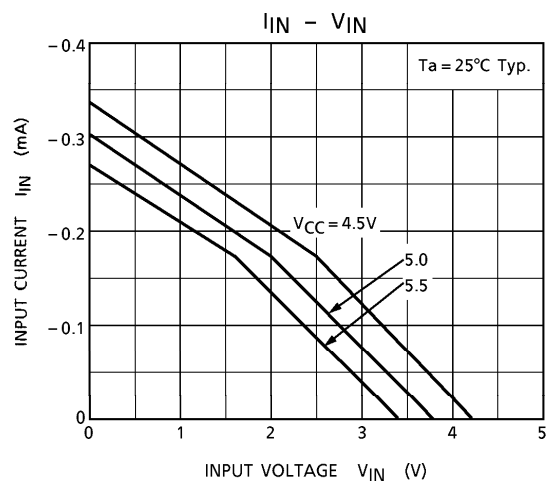
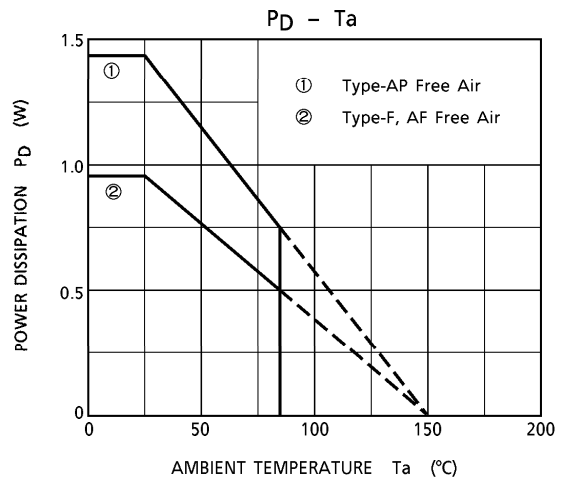
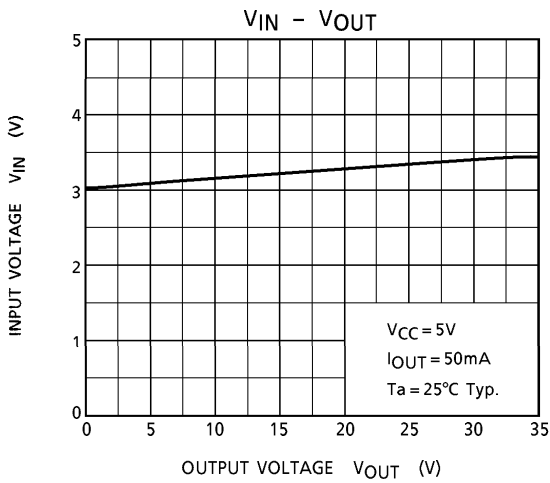
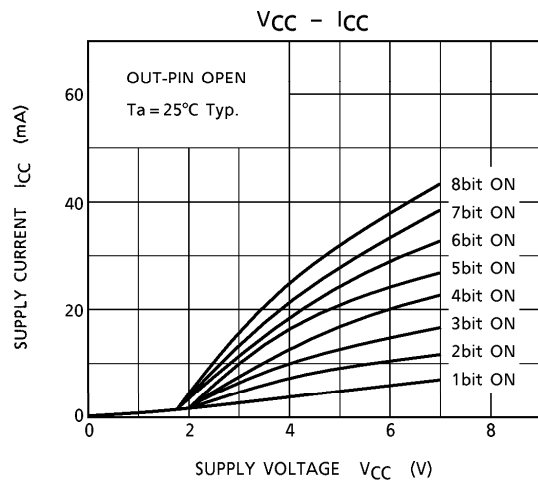
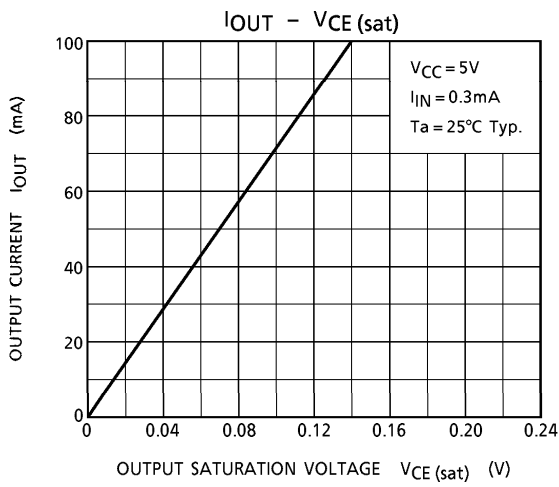
7. t_{ON}, t_{OFF}



- (Note 1) Pulse Width $50\mu s$, Duty Cycle 10%
Output Impedance 50Ω , $t_r \leq 10ns$, $t_f \leq 5ns$
- (Note 2) C_L includes probe and jig capacitance

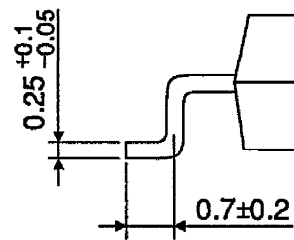
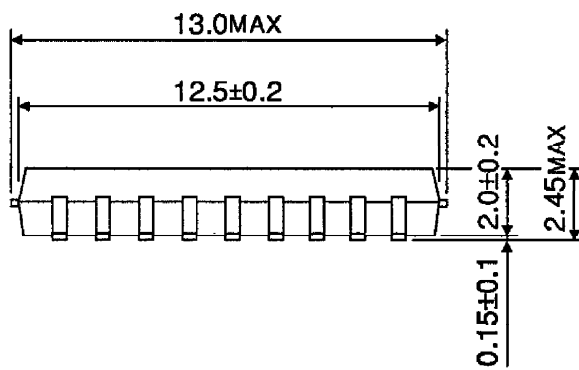
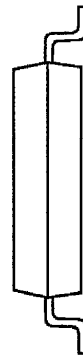
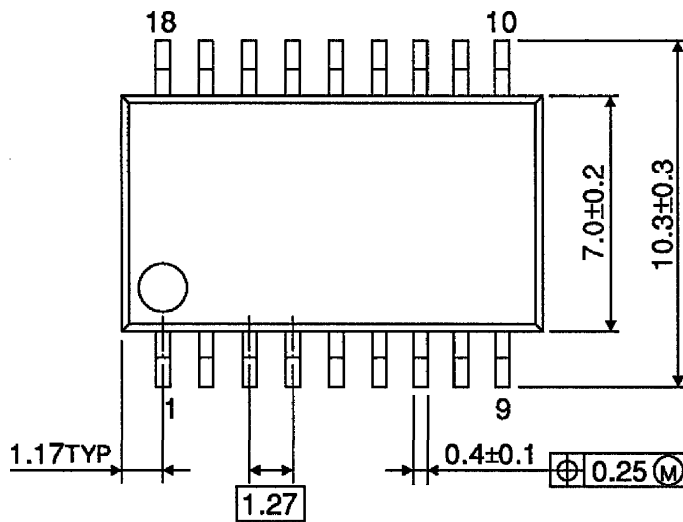
PRECAUTIONS for USING

Utmost care is necessary in the design of the output line, V_{CC} and GND line since IC may be destroyed due to short-circuit between outputs, air contamination fault, or fault by improper grounding.



OUTLINE DRAWING
SOP18-P-375-1.27

Unit : mm



Weight : 0.41g (Typ.)