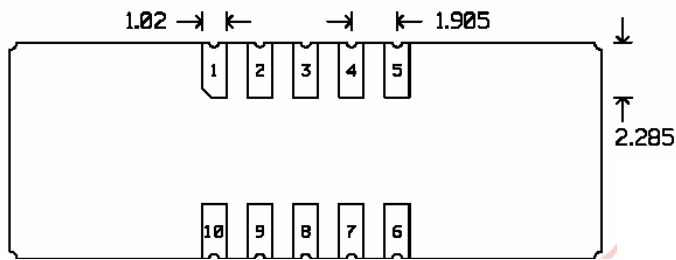
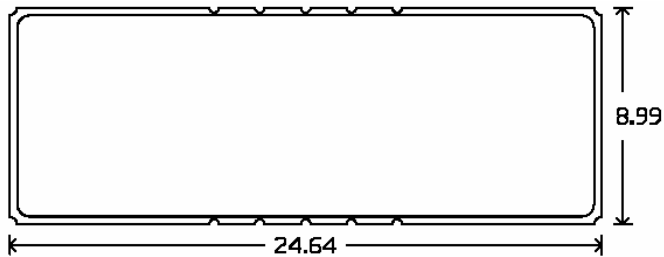






### PACKAGE OUTLINE

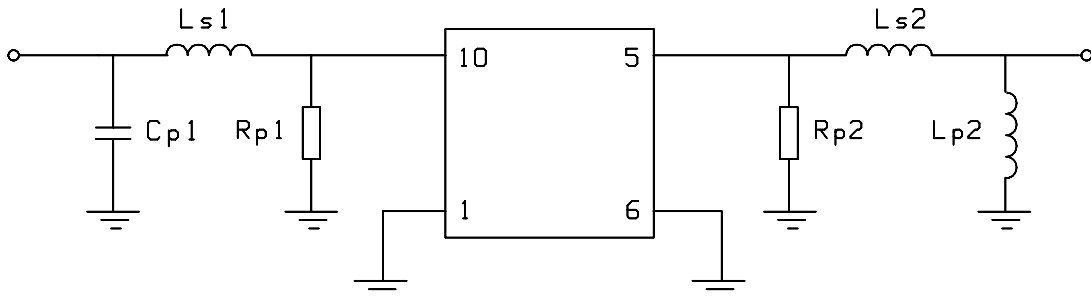


Units: mm

#### Pin Configuration:

Input: 10  
Input Return: 1  
Output: 5  
Output Return: 6  
Ground: 2,3,4,7,8,9

### MATCHING CIRCUIT



#### Component values:

$L_{s1} = 230 \text{ nH}$	$L_{s2} = 176 \text{ nH}$	(Minimum Q = 45)
$C_{p1} = 100 \text{ pF}$	$L_{p2} = 47 \text{ nH}$	
$R_{p1} = 2.7 \text{ K}\Omega$	$R_{s2} = 3.0 \text{ K}\Omega$	

#### Notes

1. Recommend use of 2% tolerance components.
2. Optimum values depend on board layout. Values intended as guide only.

ISO 9001  
Registered