

Ceramic Low Pass Filter

DC to 3300 MHz

NEW!
LFTC-3300

Maximum Ratings

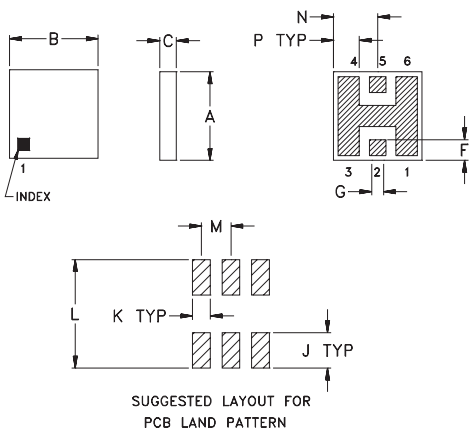
| | |
|-----------------------|----------------|
| Operating Temperature | -55°C to 100°C |
| Storage Temperature | -55°C to 125°C |

Pin Connections

| | |
|--------|---------|
| RF IN | 2** |
| RF OUT | 5** |
| GROUND | 1,3,4,6 |

** RF IN & RF OUT can be interchanged

Outline Drawing

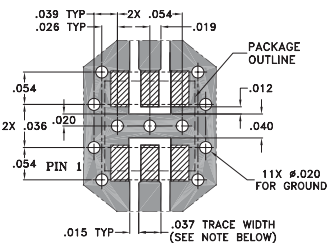


TOLERANCE UNLESS OTHERWISE STATED
2 PLACES DECIMAL: ±.01
3 PLACES DECIMAL: ±.005

Outline Dimensions (inch)

| A | B | C | D | E | F | G | H | J | K | L | M | N | P | wt. grams |
|------|------|------|---|---|------|------|---|------|------|------|------|------|------|-----------|
| .150 | .150 | .028 | — | — | .035 | .028 | — | .060 | .030 | .184 | .050 | .075 | .044 | 0.15 |
| 3.81 | 3.81 | 0.71 | — | — | 0.89 | 0.71 | — | 1.52 | 0.76 | 4.67 | 1.27 | 1.91 | 1.12 | 0.15 |

Demo Board MCL P/N: TB-233 Suggested PCB Layout (PL-112)



NOTE: TRACE WIDTH IS SHOWN FOR ROGERS RO4350 WITH DIELECTRIC THICKNESS .020" ± .0015".
COPPER: 1/2 OZ. EACH SIDE.
FOR OTHER MATERIALS TRACE WIDTH MAY NEED TO BE MODIFIED.

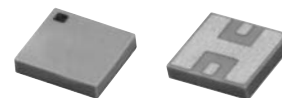
■ DENOTES PCB COPPER LAYOUT
▨ DENOTES COPPER LAND PATTERN FREE OF SOLDERMASK

Features

- miniature size, 0.15"X0.15"X.028"
- low profile, .028" height
- high power handling, 10W

Applications

- harmonic rejection
- internal rejection
- receivers & transmitters



BLUE CELL™

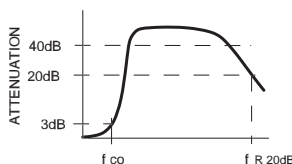
CASE STYLE: FR933
PRICE: \$3.75 ea. QTY (10-49)

Low Pass Filter Electrical Specifications (T_{AMB}=25°C)

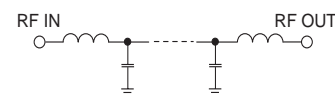
| MODEL NO. | PASSBAND (MHz) (loss < 1 dB) Typ. | f _{co} , MHz Nom. (loss 3 dB) Typ. | STOP BAND (MHz) | | VSWR (:1) Passband Typ. | POWER INPUT* (W) | MARKING | NO. OF SECTIONS |
|-----------|---|--|-----------------|----------------|-------------------------------|------------------|---------|-----------------|
| | | | (> 20 dB) | (loss > 40 dB) | | | | |
| LFTC-3300 | DC-3300 | 4060 | 5600 | 10000 | 1.2 | 10 | LF9 | 7 |

* Derate linearly to 4W at 100°C ambient

typical frequency response



schematic



Typical Performance Data at 25°C

| Frequency (MHz) | Insertion Loss (dB) | VSWR (:1) |
|-----------------|---------------------|-----------|
| 100.00 | 0.08 | 1.05 |
| 1000.00 | 0.29 | 1.24 |
| 1600.00 | 0.34 | 1.10 |
| 2000.00 | 0.44 | 1.15 |
| 2600.00 | 0.60 | 1.21 |
| 3200.00 | 0.76 | 1.15 |
| 3500.00 | 0.95 | 1.14 |
| 4060.00 | 3.16 | 3.16 |
| 4600.00 | 10.72 | 16.69 |
| 5000.00 | 16.54 | 44.51 |
| 5600.00 | 24.07 | 118.44 |
| 7000.00 | 36.57 | 38.64 |
| 8000.00 | 27.88 | 23.45 |
| 9000.00 | 22.32 | 22.03 |
| 10000.00 | 19.50 | 21.00 |

