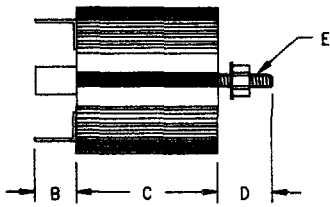
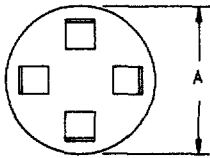


# 3 Amp Encapsulated Assemblies ER Series



Dimensions			
	Inches	Millimeters	Notes
A	1.31	33.3	
B	0.44	11.1	
C	1.06	26.9	
D	0.47	11.9	
E	---	---	1

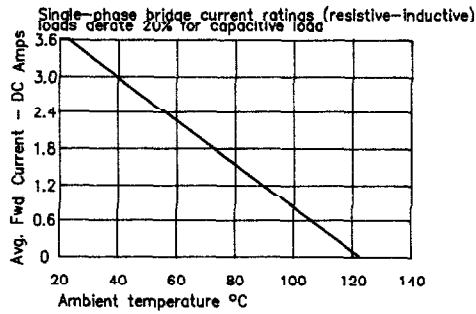
Note 1: 1/4"-20 Mounting Stud

Microsemi Catalog Number	Max. PRV Rating Per Circuit Arm
ER*1B1	100
ER*2B1	200
ER*3B1	300
ER*4B1	400
ER*5B1	500
ER*6B1	600
ER*7B1	700
ER*8B1	800
ER*9B1	900
ER*10B1	1000
ER*12B1	1200
ER*14B1	1400
ER*16B1	1600

\*Add F21 for Faston Terminal with Series 21 Diode  
\*Add L21 for Flexible lead with Series 21 Diode (min length-4")

- Encapsulated in rounded case
- Single phase available
- Full Wave Bridge rating of 1600 PRV
- Completely sealed, compact, corrosion and moisture resistant
- Available in a variety of circuit configurations

Electrical Characteristics	
Circuit:	Single phase full wave bridge
AC Input:	Up to 1600 PRV
DC Output:	Up to 3 Amps DC (40°C Amb.)
Surge Current	
Rating:	250 Amps peak for one cycle (25°C Amb.)
Loads:	Resistive, Inductive, Capacitive, Continuous
Duty Cycle:	Continuous
Cooling:	Convection
Design Features:	Diodes housed in an epoxy sealed case. Faston terminals or flexible leads.



PH: 303-469-2161  
FAX: 303-466-3775

**Microsemi Corp.**  
**Colorado**

G-1