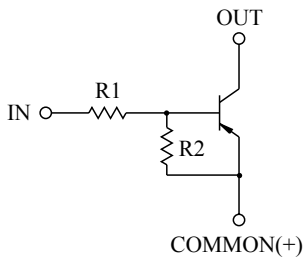


SWITCHING APPLICATION.
INTERFACE CIRCUIT AND DRIVER CIRCUIT APPLICATION.

FEATURES

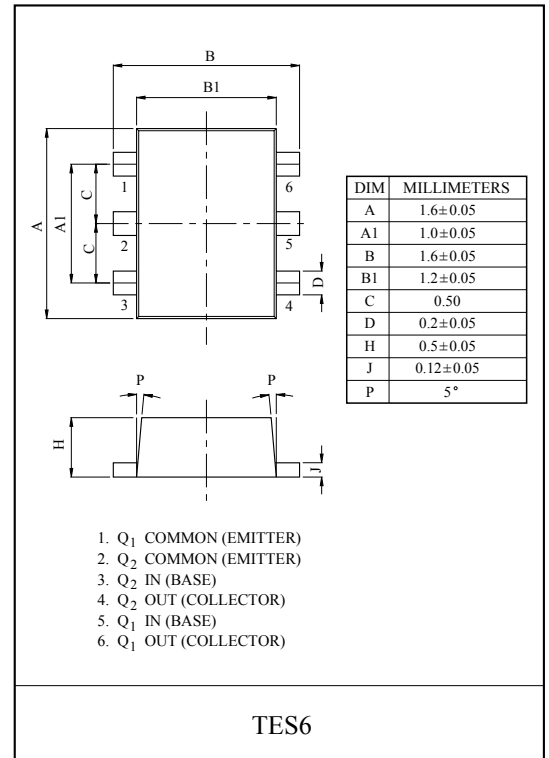
- With Built-in Bias Resistors.
- Simplify Circuit Design.
- Reduce a Quantity of Parts and Manufacturing Process.
- High Packing Density.

EQUIVALENT CIRCUIT

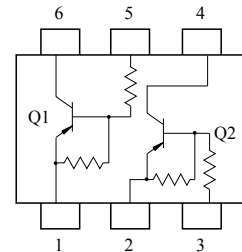


BIAS RESISTOR VALUES

TYPE NO.	R1(kΩ)	R2(kΩ)
KRA721E	4.7	4.7
KRA722E	10	10
KRA723E	22	22
KRA724E </td <td>47</td> <td>47</td>	47	47
KRA725E	2.2	47
KRA726E	4.7	47



EQUIVALENT CIRCUIT (TOP VIEW)



MAXIMUM RATING (Ta=25°C)

CHARACTERISTIC		SYMBOL	RATING	UNIT
Output Voltage	KRA721E ~ 726E	V_O	-50	V
Input Voltage	KRA721E	V_I	-20, 10	V
	KRA722E		-30, 10	
	KRA723E		-40, 10	
	KRA724E		-40, 10	
	KRA725E		-12, 5	
	KRA726E		-20, 5	
Output Current	KRA721E ~ 726E	I_O	-100	mA
Power Dissipation		P_D^*	200	mW
Junction Temperature		T_j	150	°C
Storage Temperature Range		T_{stg}	-55 ~ 150	°C

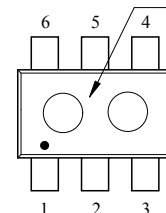
* Total Rating.

MARK SPEC

TYPE	KRA721E	KRA722E	KRA723E	KRA724E	KRA725E	KRA726E
MARK	JA	JB	JC	JD	JE	JF

Marking

Type Name



KRA721E~KRA726E

ELECTRICAL CHARACTERISTICS (Ta=25°C)

CHARACTERISTIC		SYMBOL	TEST CONDITION	MIN.	TYP.	MAX.	UNIT
Output Cut-off Current	KRA721E ~ 726E	$I_{O(OFF)}$	$V_O=-50V, V_I=0$	-	-	-500	nA
DC Current Gain	KRA721E	G_I	$V_O=-5V, I_O=-10mA$	30	55	-	
	KRA722E			50	80	-	
	KRA723E			70	120	-	
	KRA724E			80	200	-	
	KRA725E			80	200	-	
	KRA726E			80	200	-	
Output Voltage	KRA721E ~ 726E	$V_{O(ON)}$	$I_O=-10mA, I_I=-0.5mA$	-	-0.1	-0.3	V
Input Voltage (ON)	KRA721E	$V_{I(ON)}$	$V_O=-0.2V, I_O=-5mA$	-	-1.5	-2.0	V
	KRA722E			-	-1.8	-2.4	
	KRA723E			-	-2.1	-3.0	
	KRA724E			-	-2.8	-5.0	
	KRA725E			-	-0.8	-1.1	
	KRA726E			-	-0.9	-1.3	
Input Voltage (OFF)	KRA721E ~ 724E	$V_{I(OFF)}$	$V_O=-5V, I_O=-0.1mA$	-1.0	-1.2	-	V
	KRA725E ~ 726E			-0.5	-0.65	-	
Transition Frequency	KRA721E ~ 726E	f_T^*	$V_O=-10V, I_O=-5mA$	-	200	-	MHz
Input Current	KRA721E	I_I	$V_I=-5V$	-	-	-1.8	mA
	KRA722E			-	-	-0.88	
	KRA723E			-	-	-0.36	
	KRA724E			-	-	-0.18	
	KRA725E			-	-	-3.6	
	KRA726E			-	-	-1.8	

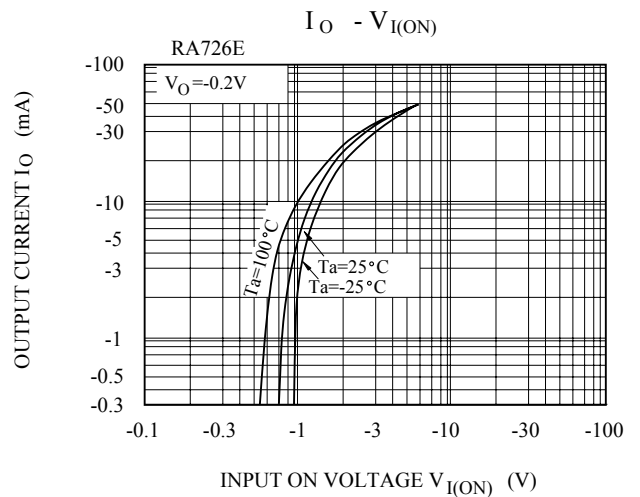
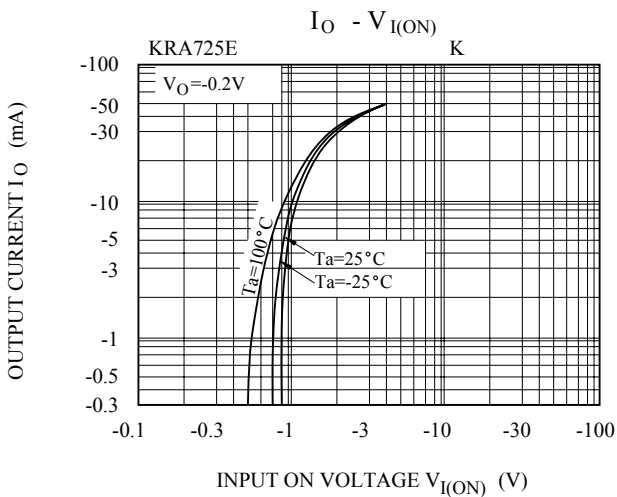
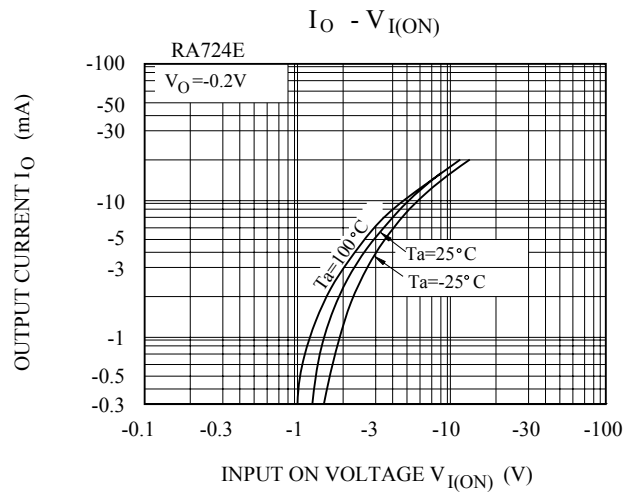
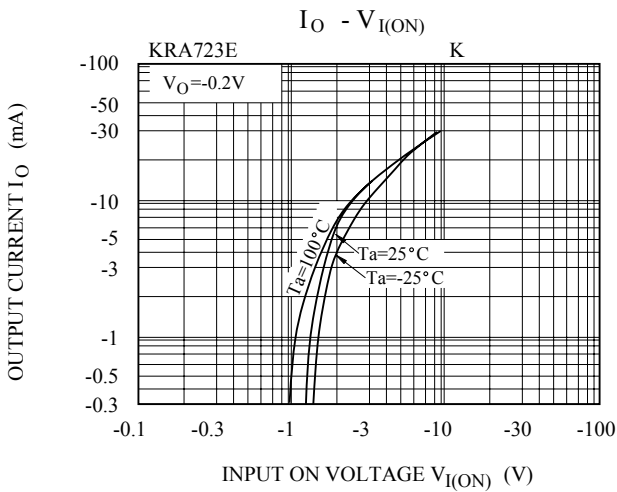
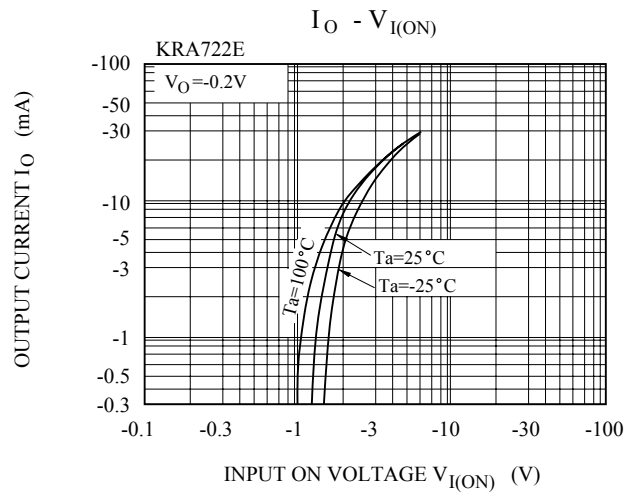
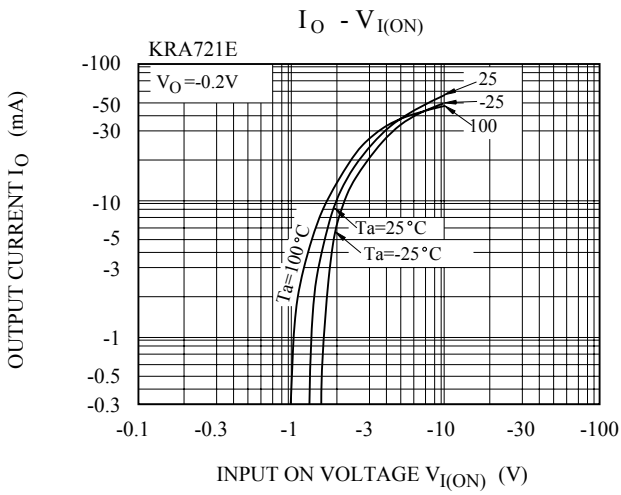
Note : * Characteristic of Transistor Only.

KRA721E~KRA726E

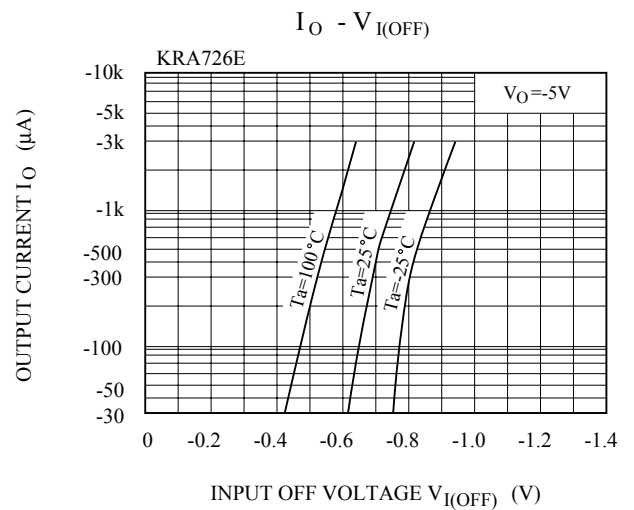
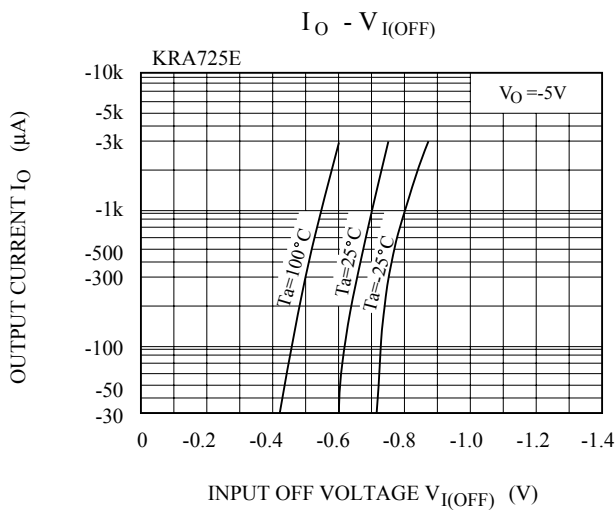
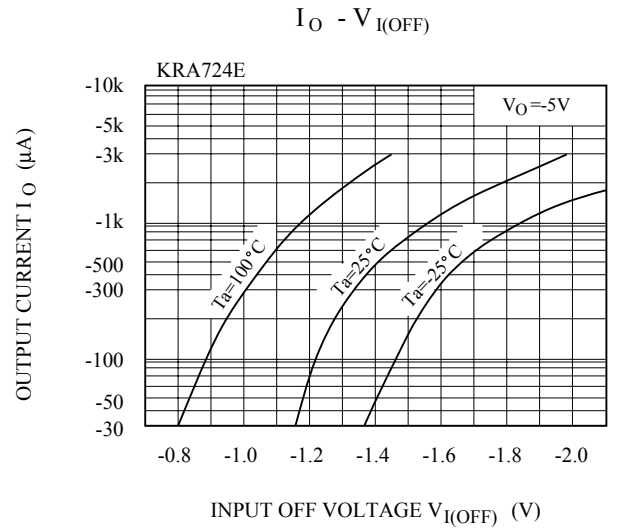
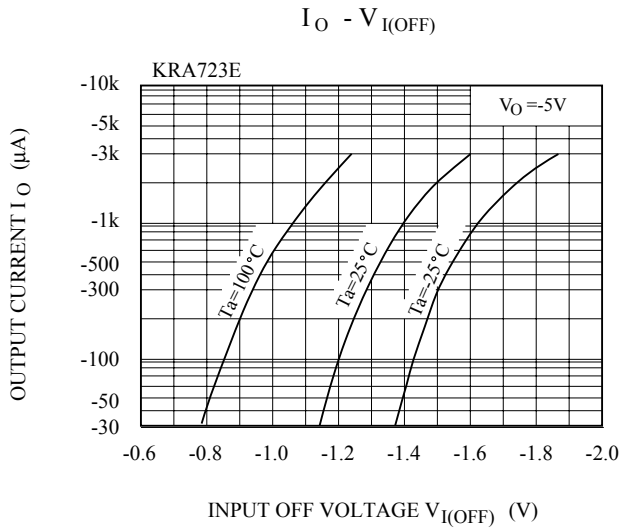
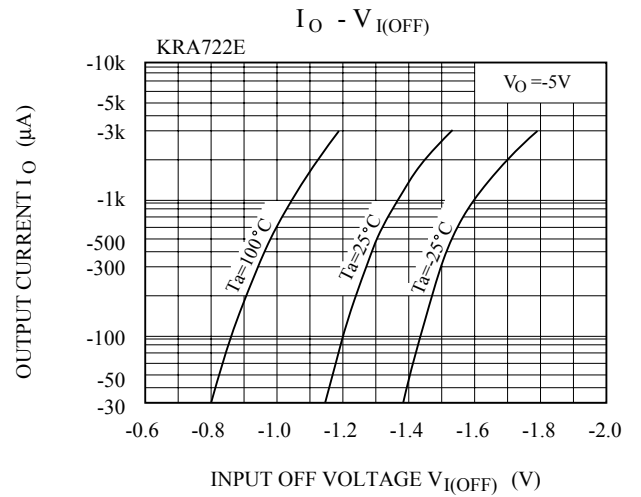
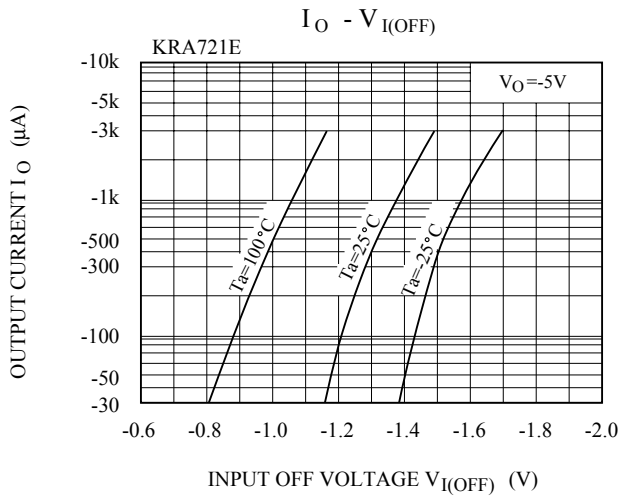
ELECTRICAL CHARACTERISTICS (Ta=25°C)

CHARACTERISTIC		SYMBOL	TEST CONDITION	MIN.	TYP.	MAX.	UNIT
Switching Time	Rise Time	KRA721E	V _O =-5V V _{IN} =-5V R _L =1kΩ	-	0.07	-	μS
		KRA722E		-	0.06	-	
		KRA723E		-	0.2	-	
		KRA724E		-	0.24	-	
		KRA725E		-	0.02	-	
		KRA726E		-	0.07	-	
	Storage Time	KRA721E		-	1.1	-	
		KRA722E		-	1.1	-	
		KRA723E		-	1.1	-	
		KRA724E		-	1.1	-	
		KRA725E		-	1.1	-	
		KRA726E		-	1.1	-	
	Fall Time	KRA721E		-	0.15	-	
		KRA722E		-	0.24	-	
		KRA723E		-	0.38	-	
		KRA724E		-	0.63	-	
		KRA725E		-	0.1	-	
		KRA726E		-	0.2	-	

KRA721E~KRA726E



KRA721E~KRA726E



KRA721E~KRA726E

