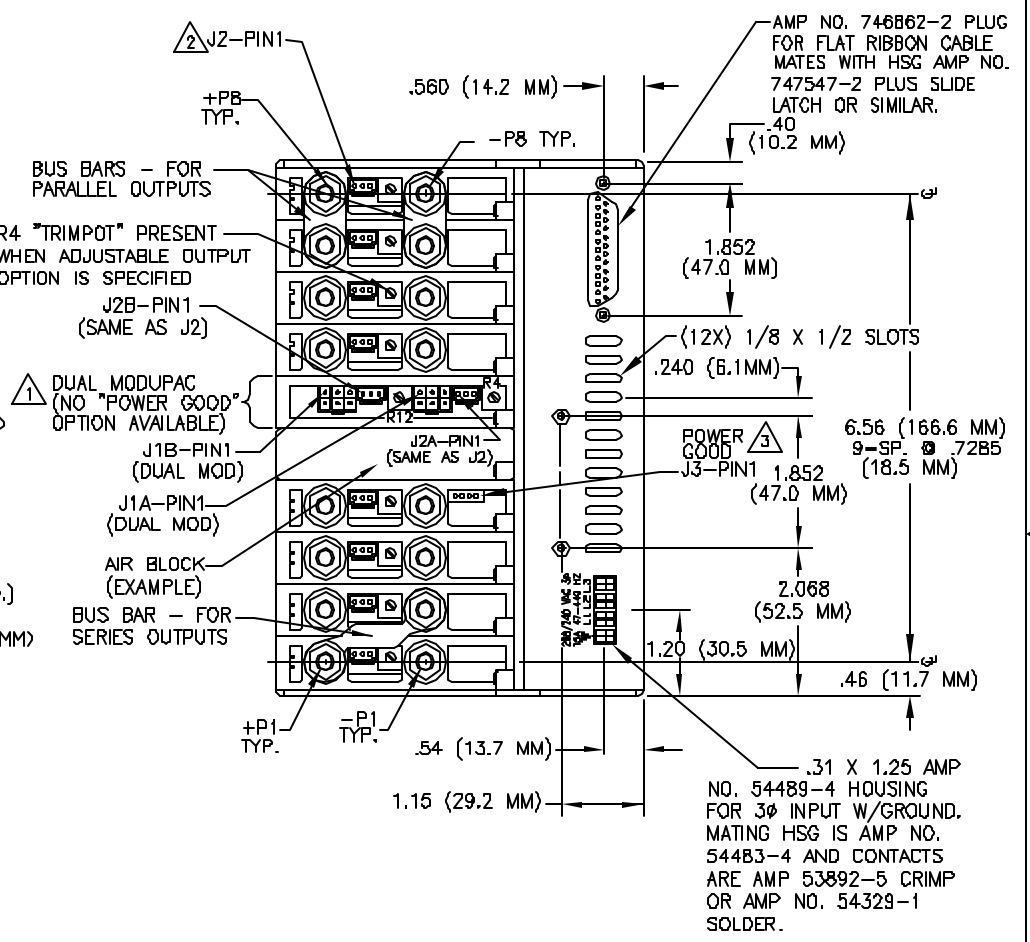
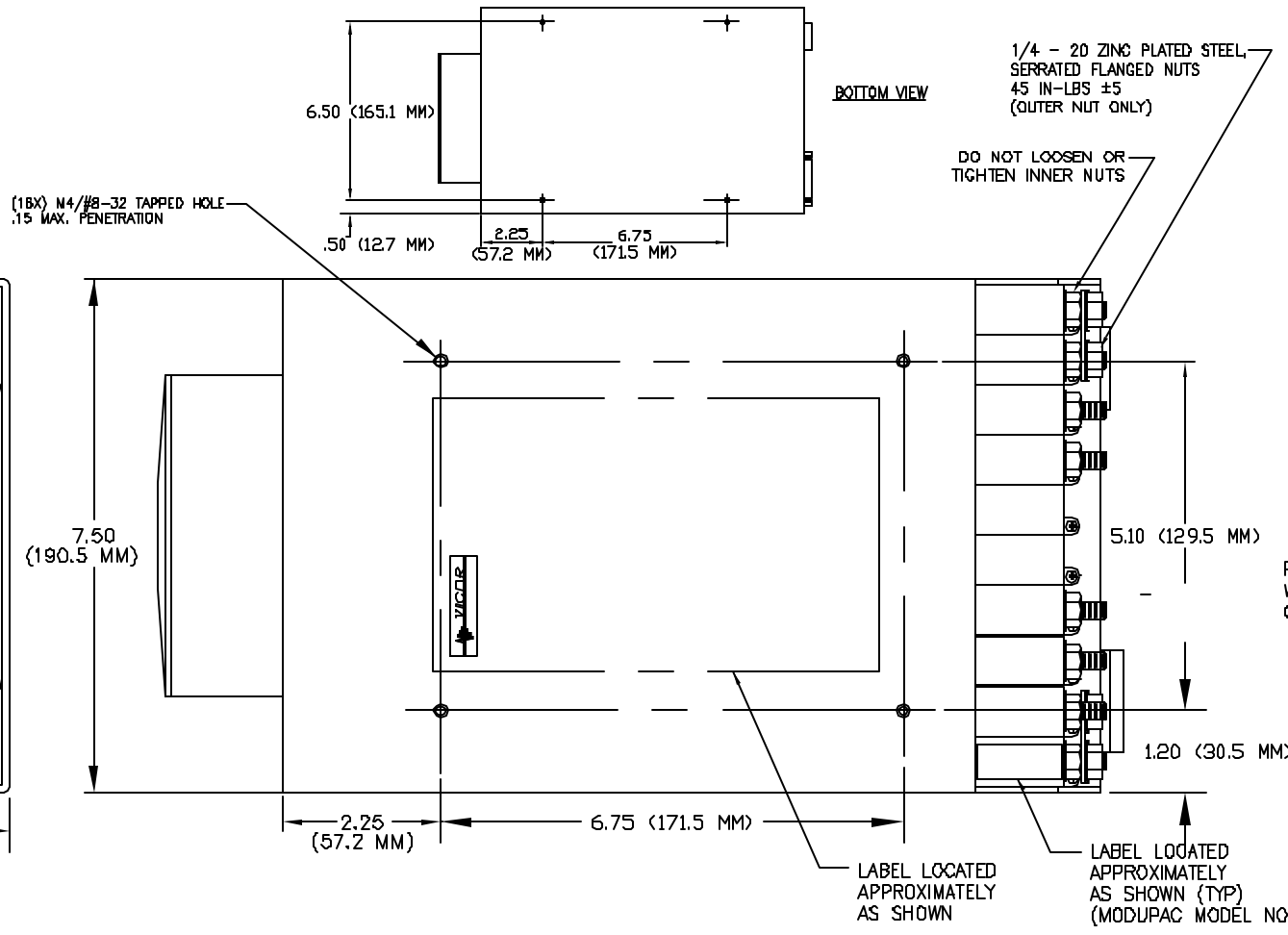
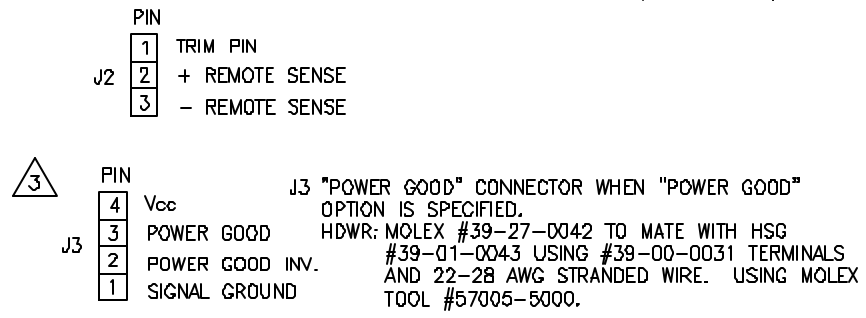
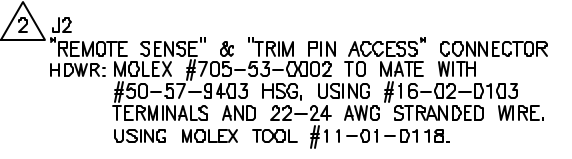
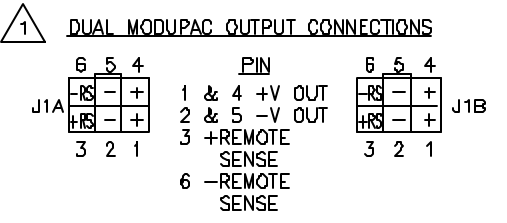


PROPRIETARY DATA:
 This document and information contained may not be reproduced, used or disclosed without prior written permission of WESTCOR a division of VICOR Corporation.

| REVISIONS | | | | |
|-----------|-----|---------------------------------|----------|----------|
| ECO | REV | DESCRIPTION | DATE | APPROVED |
| 726 | A | RELEASE TO PRODUCTION | 11-20-97 | RBD |
| -- | A1 | CHG: .600 DIM TO .250 | 06/06/00 | LGK |
| 1137 | B | ADD REFERENCE TO VICOR WEB PAGE | 3/21/02 | RME |
| 1237 | C | REVERSE THE PIN NUMBERS ON (J3) | 01/16/03 | LGK |



NOTES: UNLESS OTHERWISE SPECIFIED



NOTE: A DETAILED DESIGN GUIDE IS AVAILABLE @ www.vicorpower.com

| | | | | | | |
|---|-----------------------------------|------------------|-------------|--|--|----------|
| UNLESS OTHERWISE SPECIFIED DIMENSIONS ARE IN INCHES TOLERANCES ARE: | | CONTRACT NO. --- | | WESTCOR a division of VICOR Corp. | | |
| FRACTIONS ± 1/32 | DECIMALS .XX ± .01 .XXX ± .005 | ANGLES ± 1/2° | --- | | | |
| MATERIAL --- | FINISH --- | APPROVALS | DATE | OUTLINE MEGAPAC 4KW STANDARD LENGTH | | |
| --- | SEE MIS | DRAWN | S. KEITH | | | 08/24/97 |
| NEXT ASSY | USED ON | CHECKED | D.BIGELOW | | | 12/03/97 |
| APPLICATION | DO NOT SCALE DRAWING | APPROVED | R.B.DRABING | | | 11/20/97 |
| | | DESIGNED | --- | --- | SIZE B CAGE CODE 0E5V2 DWG NO. 08-130080 REV C | |
| | | SCALE | NTS | FILENAME: 08-130080 | SHEET 1 OF 1 | |