

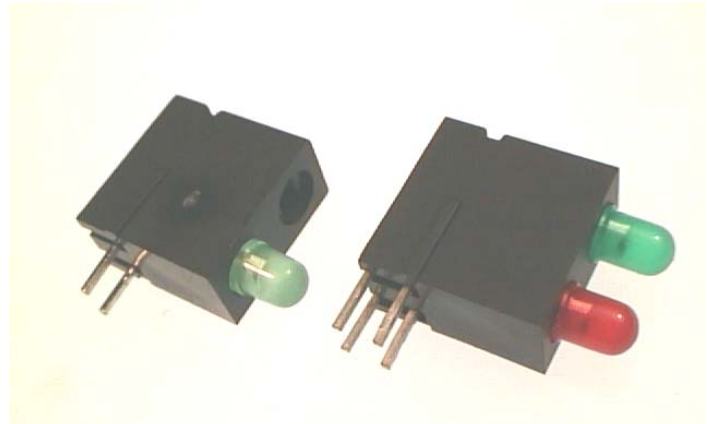
ORD 9702XXL ORE 9701XL Low Current PCB MOUNTED LEDS

An assembly containing one or two LEDs. The housings provide convenient and rigid mountings for a double row of T1 size LEDs on 5.08mm vertical pitch.

- Leads on 0.1 inch pitch for easy assembly.
- Matched brightness.

Features to Customer's specifications

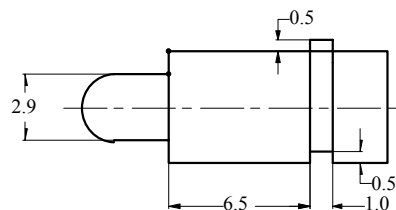
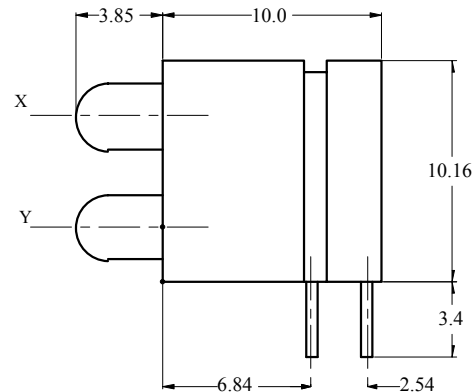
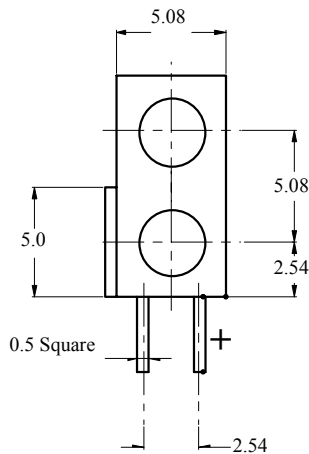
- One or two LEDs per assembly in any position required.
- LED colours and combination of colours.
- Polarity of leads



ORE9701XL

ORD9702XXL

MECHANICAL DATA



BEDFORD OPTO TECHNOLOGY LTD
1,BIGGAR BUSINESS PARK, BIGGAR, ML12 6FX
Tel: +44 (0) 1899 221221 Fax: +44 (0) 1899 221009
Website: bot.co.uk E-mail: bill@bot.co.uk

ABSOLUTE MAXIMUM RATINGS (T_A = 25°C)

ORD 9702L
ORE 9701L

Parameter	Value
Forward Current	7mA
Power Dissipation	20mW
Reverse Voltage	6V
Operating Temperature	-40°C to +100°C
Storage Temperature	-55°C to 100°C
Lead Soldering Temperature for 5sec (2.0mm from Body)	260°C

OPTO ELECTRONIC DATA (T_a = 25°C)

COLOUR		Luminous Intensity I _f = 10mA mcd	Peak Wavelength nm	Viewing Angle 2θ ^{1/2} Degrees	Forward Voltage I _f = 2mA volts
RED	min	1	-	-	-
	typ	2	635	50	1.9
YELLOW	min	1	-	-	-
	typ	2	585	50	2.4
GREEN	min	1	-	-	-
	typ	2	565	50	1.9
	ma	-	-	-	2.4

ORDERING INFORMATION

Dual LED _____ ORD 9702XYL X = Top LED position
Single LED _____ ORE 9701XL Y = Bottom LED position
X = Bottom LED position only

Indicate Colour by using R= Red
Y= Yellow
G= Green

None Standard LED types position and polarities available on request

BEDFORD OPTO TECHNOLOGY LTD
1, BIGGAR BUSINESS PARK, BIGGAR, ML12 6FX
Tel: +44 (0) 1899 221221 Fax: +44 (0) 1899 221009
Website: bot.co.uk E-mail: bill@bot.co.uk

ISS B 20.12.00