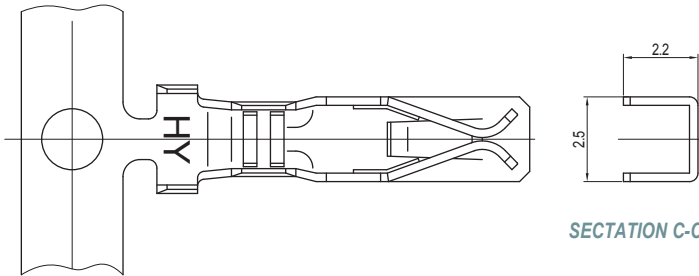
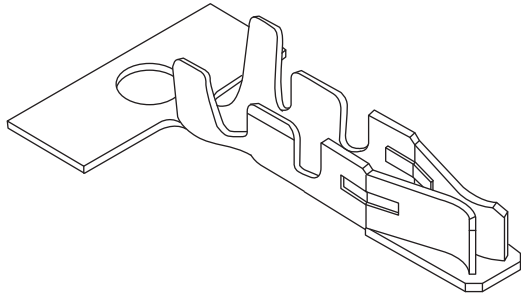


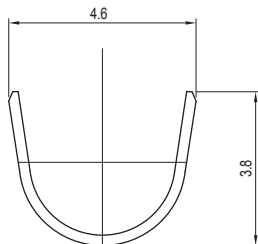
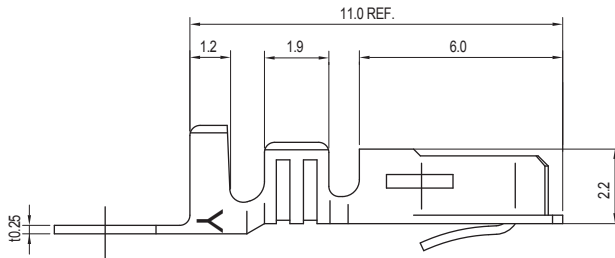
5.00mm (0.196") PITCH CONNECTOR

Wire-to-Board
Crimp Terminal

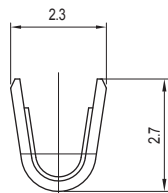
YLT500VM Series



SECTION C-C'



SECTION A-A'



SECTION B-B'

Material

I/NO	DESCRIPTION	TITLE	AWG	MATERIAL	FINISH
1	TERMINAL	YLT500VM	#22~#18	Phosphor Bronze	Tin-Plated

Specification

ITEM	SPEC
Voltage Rating	AC/DC 250V
Current Rating	AC/DC 5A
Operating Temperature	-25℃~+85℃
Contact Resistance	-
Withstanding Voltage	AC1500V/1min
Insulation Resistance	1000MΩ MIN
Applicable Wire	AWG #22~#18
Applicable P.C.B	-
Applicable FPC/FFC	-
Solder Height	-
Crimp Tensile Strength	AWG #18 : 4.0kgfMIN AWG #20 : 3.5kgfMIN AWG #22 : 3.0kgfMIN
UL FILE NO	-