

SOLID TANTALUM

TD (Resin Dipped Radial) SERIES

SOLID TANTALUM

The TD series is a range of resin dipped tantalum capacitors designed for entertainment, commercial, and industrial equipment. They have sintered anodes and solid electrolyte. The epoxy resin housing is flame retardant with a limiting oxygen index in excess of 30 (ASTM-D-2863).

RATINGS

Capacitance Range: 0.1µf to 680µf

Tolerance: ±20%

Voltage Range: 6.3V to 50V

PERFORMANCE SPECIFICATIONS

Operating Temperature Range:

−55°C to +85°C (−67°F to +185°F)

Capacitance Tolerance (M): ±20%

measured at +20°C (+68°F), 120Hz

Dissipation Factor: measured at +20°C (+68°F), 120Hz

Capacitance Range µf	0.1 – 1.5	2.2 – 6.8	10 – 68	100 – 680
	≤ 0.04	≤ 0.06	≤ 0.08	≤ 0.10

Surge Voltage:

DC Rated Voltage	6.3	10	16	20	25	35	50
Surge Voltage	8	13	20	26	33	46	65

MECHANICAL SPECIFICATIONS

Lead Solderability:

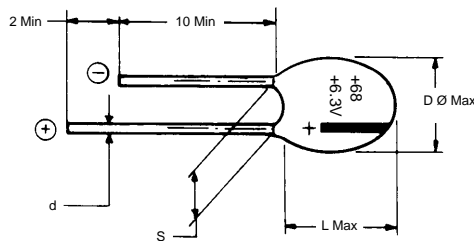
Meets the requirements of MIL-STD 202, Method 208

Marking:

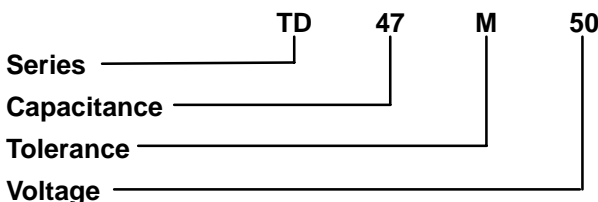
Consists of capacitance, DC voltage, and polarity.

Recommended Cleaning Solvents:

Methanol, isopropanol ethanol, isobutanol, petroleum ether, propanol and/or commercial detergents. Halogenated hydrocarbon cleaning agents such as Freon (MF, TF, or TC), trichloroethylene, trichloroethane, or methylchloride are not recommended as they may damage the capacitor.



ORDERING INFORMATION



CAPACITANCE RANGE:

(Number denotes case size)

Rated Voltage (WV)	6.3	10	16	20	25	35	50
Surge Voltage (V)	8	13	20	26	33	46	65
Cap (µf)							
0.10						1	1
0.15						1	1
0.22						1	1
0.33						1	2
0.47						1	2
0.68						1	2
1.0				1	1	1	4
1.5			1	1	1	2	5
2.2		1	1	2	2	3	5
3.3	1	1	2	3	3	4	7
4.7	1	2	3	4	4	5	8
6.8	2	3	4	5	5	6	8
10.0	3	4	5	6	6	7	9
15.0	4	5	6	7	7	9	10
22.0	5	6	7	8	9	10	13
33.0	6	7	8	9	10	12	
47.0	7	8	10	11	12	14	
68.0	8	9	11	13	13		
100.0	9	11	13	13			
150.0	11	13	15				
220.0	12	14	15				
330.0	14	15					
470.0	15						
680.0	15						

TD Series Dimensions: mm

Diameter (D Ø) x Length (L)

Case Size	Diameter (D Ø)	Length (L)	Lead Wire (d)	Spacing (S)
1	4.50	8.50	0.50	2.54 ±0.51
2	4.50	9.00	0.50	
3	5.00	10.00	0.50	
4	5.00	10.50	0.50	
5	5.50	10.50	0.50	
6	6.00	11.50	0.50	
7	6.50	11.50	0.50	
8	7.00	12.00	0.40	
9	8.00	13.00	0.50	5.08 ±0.51
10	8.50	14.00	0.50	
11	9.00	14.00	0.50	
12	9.00	14.50	0.50	
13	9.00	16.00	0.50	
14	10.00	17.00	0.50	
15	10.00	18.50	0.50	