

TLA4529 is a 1:1 line matching transformer with the following features.

- **BABT** certified for reinforced insulation to EN41003 & EN60950. . Certificate #: **CT/T/0054**
- Also conforms to U.S. **FCC part 68**, Canadian **CS 03** and Australian **AS3260** regulations.
- Epoxy encapsulated.

Applications:

Interfacing equipment to a 600Ω line, requiring high insulation voltage between line and equipment , and where no DC current handling is required.



## MECHANICAL

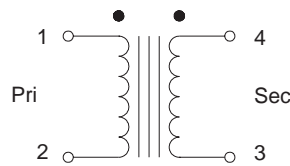
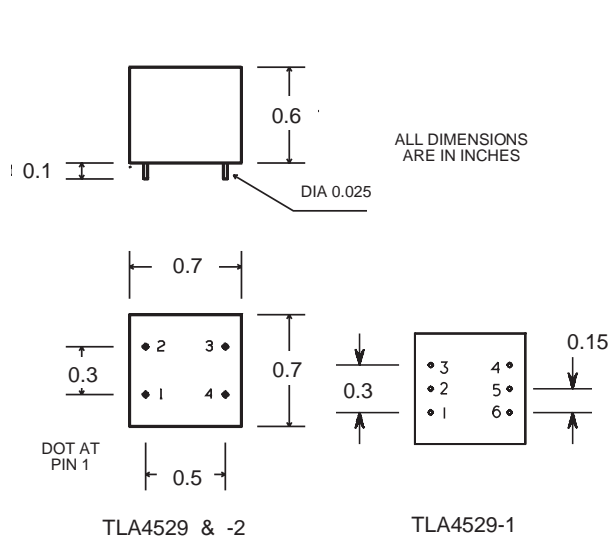


Fig.1: Schematic for TLA4529 & -2

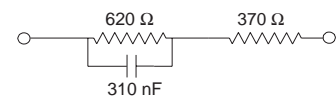


Fig.3 : Ref. Network (BS6305)

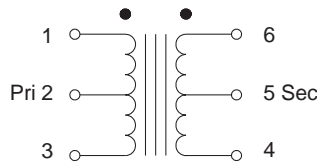


Fig.4: Schematic for TLA4529-1

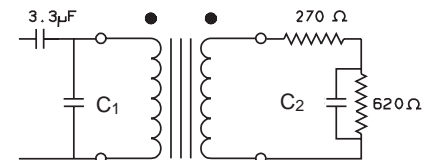


Fig.2: Test circuit

## ELECTRICAL

			TLA4529	TLA4529-1	TLA4529-2	
Wind. Res.	(Ohms)	Pri	31.5	31.5	29.2	
		Sec	31.5	31.5	35.1	
Leakage Ind.	(mH)	Pri	< 9	< 9	< 1	
Insertion Loss	(dB)	@ 1000 Hz	< 1.0	< 1.0	< 1.0	
Frequency Resp.	(KHz)	< 0.5 dB	0.2 - 4	0.2 - 4	0.2 - 100	
Longitudinal Bal.	(dB)	200 - 4000 Hz	> 65	> 65	> 65	
Return Loss	(dB)	200 - 4000 Hz	> 19	> 19	> 19	@ Z <sub>ref</sub> = Fig.3, Z <sub>load</sub> = Fig.2
	(dB)	200 - 4000 Hz	> 14	> 14	> 14	@ Z <sub>ref</sub> = 600Ω, Z <sub>load</sub> = 600Ω
Cross talk	(dB)	200 - 4000 Hz	> 60	>60	> 90 dB	
Dielectric Strength	(Vrms)		4000	4000	4000	
	C <sub>1</sub> (Suggested value)		27 nF	27 nF		Select for optimum Return Loss
	C <sub>2</sub> (Suggested value)		150 nF	150 nF		