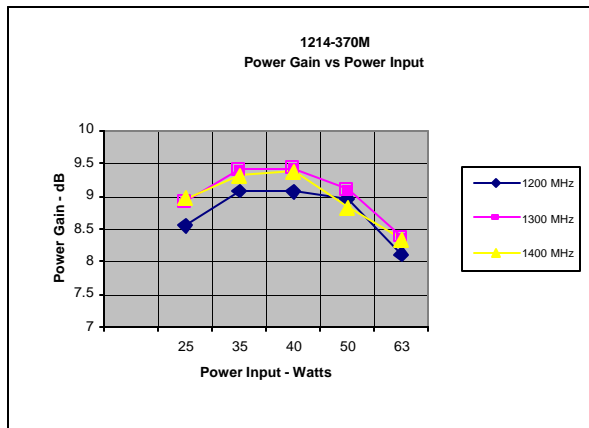
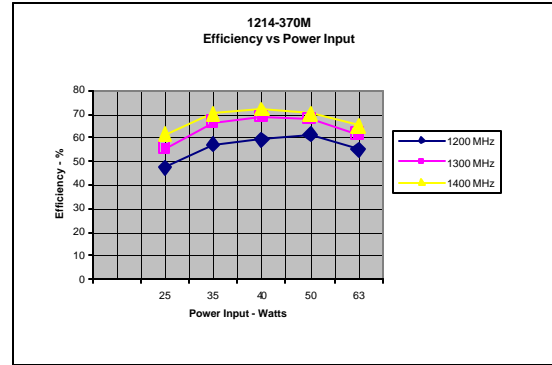
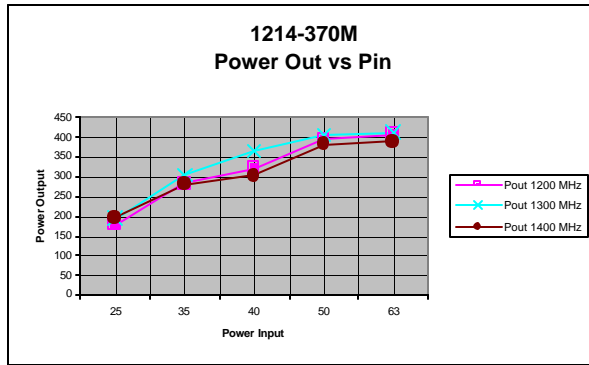


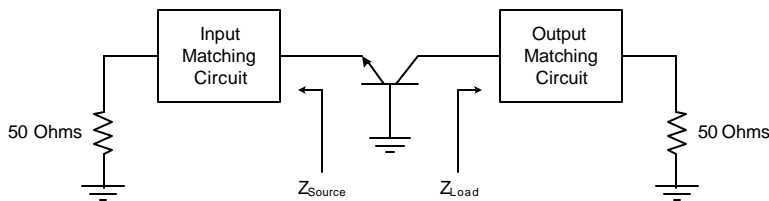


1214-370M

Performance Curves



Impedance Information



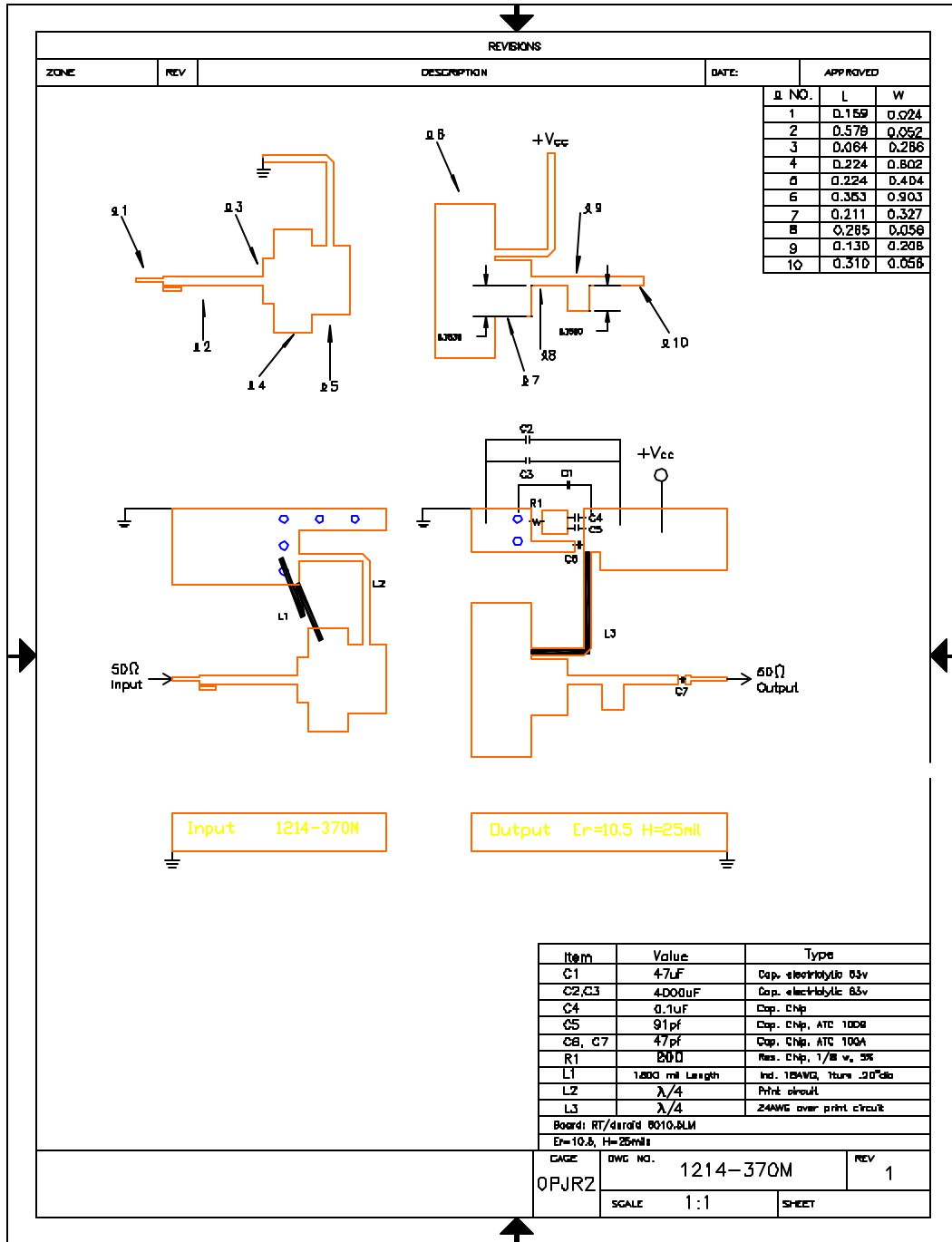
Impedance		
Freq	Zs	Zl
1200	1.75-j2.23	1.52-j2.11
1300	1.75-j1.63	1.36-j1.97
1400	1.76-j1.19	1.13-j1.77

Board Material RT 6010.5 LM 25 Mil
TRL Measurement

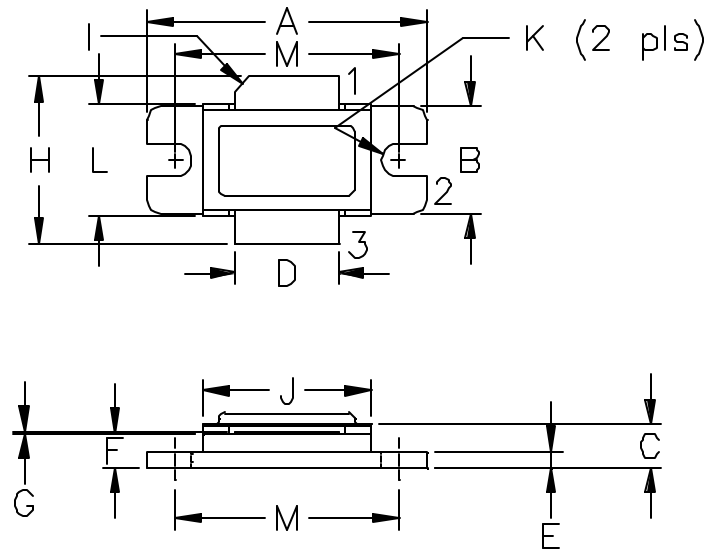
APT-RF, Inc. reserves the right to make changes without further notice. APT-RF recommends that before the product(s) described herein are written into specifications, or used in critical applications, that the performance characteristics be verified by contacting the factory.

1214-370M

Broadband Test Fixture



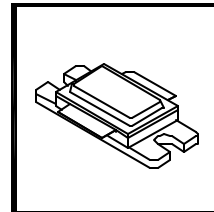
APT-RF, Inc. reserves the right to make changes without further notice. APT-RF recommends that before the product(s) described herein are written into specifications, or used in critical applications, that the performance characteristics be verified by contacting the factory.



DIM	MILLIMETER	±TOL	INCHES	±TOL
A	25.40	.25	1.000	.010
B	9.78	.25	.385	.010
C	4.00	.19	.142	.007
D	9.40	.13	.370	.005
E	1.53	.13	.060	.005
F	3.18	.13	.125	.005
G	0.08	+0.05/-0.00	.003	+0.002/-0.000
H	19.05	0.51	.750	.020
I	45°	5°	45°	5°
J	15.24	.25	.600	.010
K	3.05 DIA	.13	.120 DIA	.005
L	10.15	.13	.400	.005
M	20.32	.25	.800	.010

STYLE 1:
PIN 1 = COLLECTOR
2 = BASE
3 = EMITTER

STYLE 2:
PIN 1 = COLLECTOR
2 = EMITTER
3 = BASE



GHz TECHNOLOGY
 RF - MICROWAVE SILICON POWER TRANSISTORS

DWG NO.

55ST