



SAW Components

Data Sheet B7653

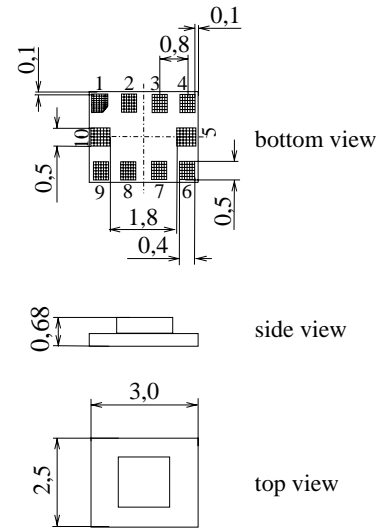




Chip Sized Saw Package QCS10C

Features

- Low-loss 2-in-1 RF filter for mobile telephone AMPS and PCS bands, receive path
- Usable passband:
Filter 1 (AMPS): 25 MHz
Filter 2 (PCS): 60 MHz
- Unbalanced to balanced operation for both filters
- Impedance transformation from 50 Ω to 200 Ω for AMPS filter
- Suitable for GPRS class 1 to 12
- Package for **S**urface **M**ounted **T**echnology (**SMT**)



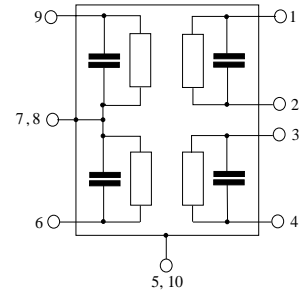
Dimensions in mm, approx. weight 0,015g

Terminals

- Ni, gold-plated

Pin configuration

- | | |
|----------|-----------------------------|
| 1,2 | Output, balanced [Filter 1] |
| 3,4 | Output, balanced [Filter 2] |
| 6 | Input Filter 2 |
| 9 | Input Filter 1 |
| 5,7,8,10 | Case Ground |



Type	Ordering code	Marking and Package according to	Packing according to
B7653	B39202-B7653-G210	C61157-A7-A129	F6104-V8156-Z000

Electrostatic Sensitive Device (ESD)

Maximum ratings

Operable temperature range	T	- 20 /+ 70	°C	
Storage temperature range	T_{stg}	- 40 /+ 85	°C	
DC voltage	V_{DC}	5	V	
ESD voltage	V_{ESD}	50	V	
Input power at GSM850, GSM900, GSM1800, GSM1900 Tx bands:				
Filter 1 (AMPS-Rx)	P_{IN}	15	dBm	peak power of GSM signal, duty cycle 4:8
Filter 2 (PCS-Rx)	P_{IN}	13	dBm	



Data Sheet



Characteristics of Filter 1 (AMPS)

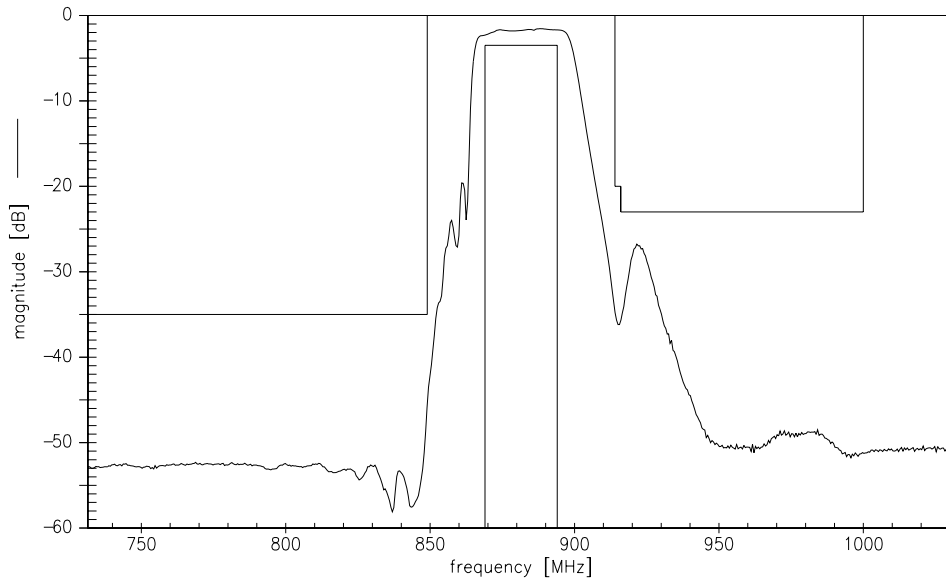
Operating temperature range: $T = -20$ to $+70$ °C
 Terminating source impedance: $Z_S = 50$ Ω
 Terminating load impedance: $Z_L = 200$ Ω || 56 nH

			min.	typ.	max.	
Center frequency	f_c		—	881,5	—	MHz
Maximum insertion attenuation	α_{max}	869,0 ... 894,0 MHz	—	3,0	3,5*	dB
Amplitude ripple (p-p)	$\Delta\alpha$	869,0 ... 894,0 MHz	—	1,5	2,0	dB
Input return loss		869,0 ... 894,0 MHz	8,0	12,0	—	dB
Output return loss		869,0 ... 894,0 MHz	8,0	11,0	—	dB
Output phase balance ($\phi(S_{31}) - \phi(S_{21}) + 180^\circ$)		869,0 ... 894,0 MHz	-5,0	—	+10,0	°
Output amplitude balance ($ S_{31}/S_{21} $)		869,0 ... 894,0 MHz	-1,1	—	+0,7	dB
Inter-band isolation	α_{min}	1930,0 ... 1990,0 MHz	30,0	40,0	—	dB
Attenuation	α_{min}	10,0 ... 600,0 MHz	45,0	54,0	—	dB
		600,0 ... 849,0 MHz	35,0	40,0	—	dB
		914,0 ... 916,0 MHz	20,0	24,0	—	dB
		916,0 ... 1000,0 MHz	23,0	27,0	—	dB
		1738,0 ... 1788,0 MHz	40,0	48,0	—	dB
		2607,0 ... 2682,0 MHz	40,0	48,0	—	dB
		3476,0 ... 3576,0 MHz	38,0	46,0	—	dB
Tx band suppression	α_{min}	824,0 ... 849,0 MHz	35,0	—	—	dB

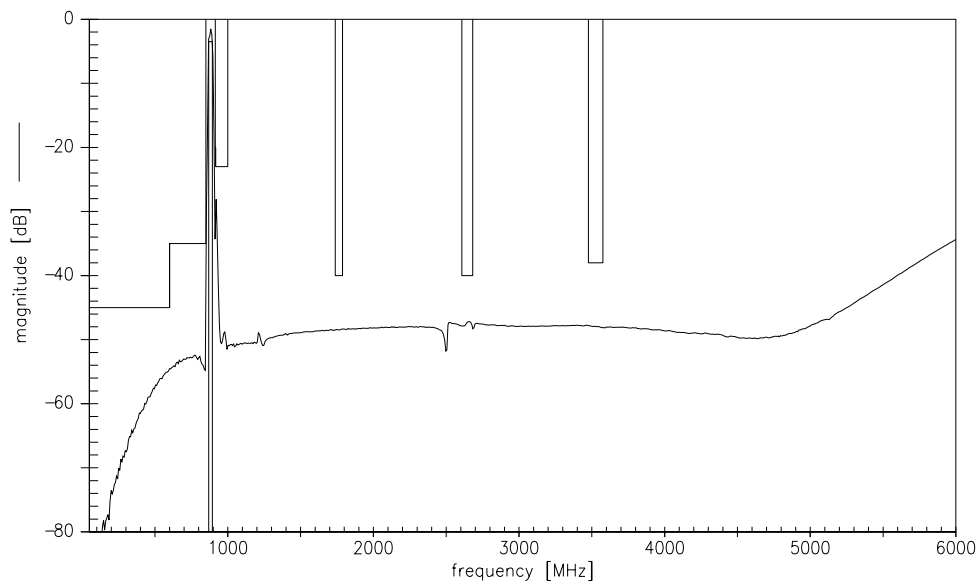
* 3,0 dB (2,6 dB typ.) for temperature range 25 ± 10 °C



Transfer function Filter 1 (AMPS)



Transfer function Filter 1 (AMPS) - wideband





Data Sheet



Characteristics of Filter 2 (PCS)

Operating temperature range: $T = -20$ to $+70$ °C
 Terminating source impedance: $Z_S = 50 \Omega$
 Terminating load impedance: $Z_L = 50 \Omega$

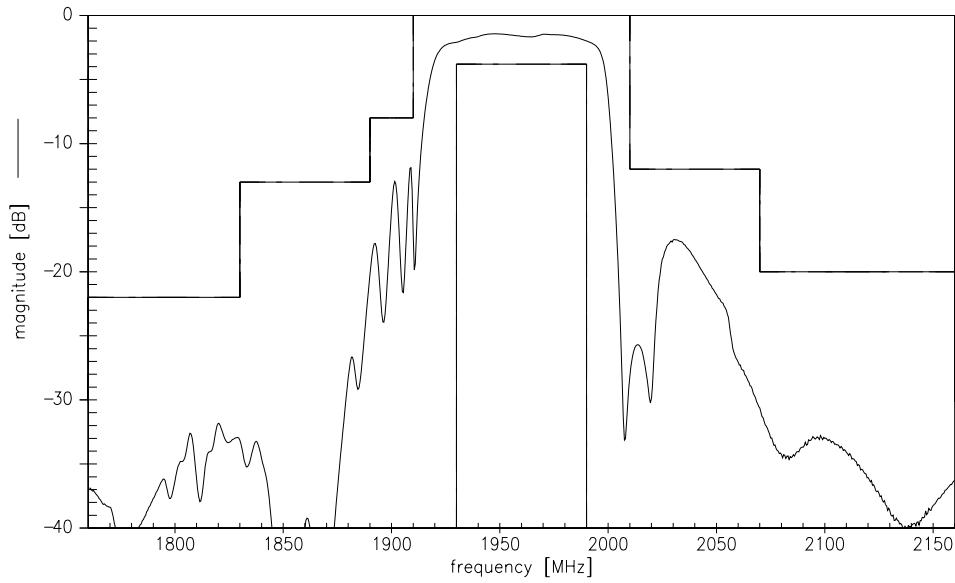
			min.	typ.	max.	
Center frequency	f_c		—	1960,0	—	MHz
Maximum insertion attenuation	α_{max}	1930,0 ... 1990,0 MHz	—	3,3	3,8*	dB
Amplitude ripple		1930,0 ... 1990,0 MHz	—	1,3	2,2	dB
Input return loss		1930,0 ... 1990,0 MHz	8,0	10,0	—	dB
Output return loss		1930,0 ... 1990,0 MHz	8,0	10,0	—	dB
Output phase balance ($\phi(S_{31}) - \phi(S_{21}) + 180^\circ$)		1930,0 ... 1990,0 MHz	-15,0	—	+15,0	°
Output amplitude balance ($ S_{31}/S_{21} $)		1930,0 ... 1990,0 MHz	-2,7**	—	+2,7**	dB
Inter-band isolation	α_{min}	869,0 ... 894,0 MHz	30,0	40,0	—	dB
Attenuation	α_{min}	10,0 ... 995,0 MHz	30,0	36,0	—	dB
		995,0 ... 1830,0 MHz	22,0	30,0	—	dB
		1830,0 ... 1890,0 MHz	13,0	17,0	—	dB
		1890,0 ... 1910,0 MHz	8,0	10,0	—	dB
		2010,0 ... 2070,0 MHz	12,0	14,0	—	dB
		2070,0 ... 3000,0 MHz	20,0	28,0	—	dB
		3000,0 ... 5000,0 MHz	25,0	35,0	—	dB
		5790,0 ... 5970,0 MHz	30,0	39,0	—	dB
Tx band suppression	α_{min}	1830,0 ... 1890,0 MHz	13,0	17,0	—	dB
		1890,0 ... 1910,0 MHz	8,0	10,0	—	dB

* 3,5 dB (2,9 dB typ.) for temperature range 25 ± 10 °C

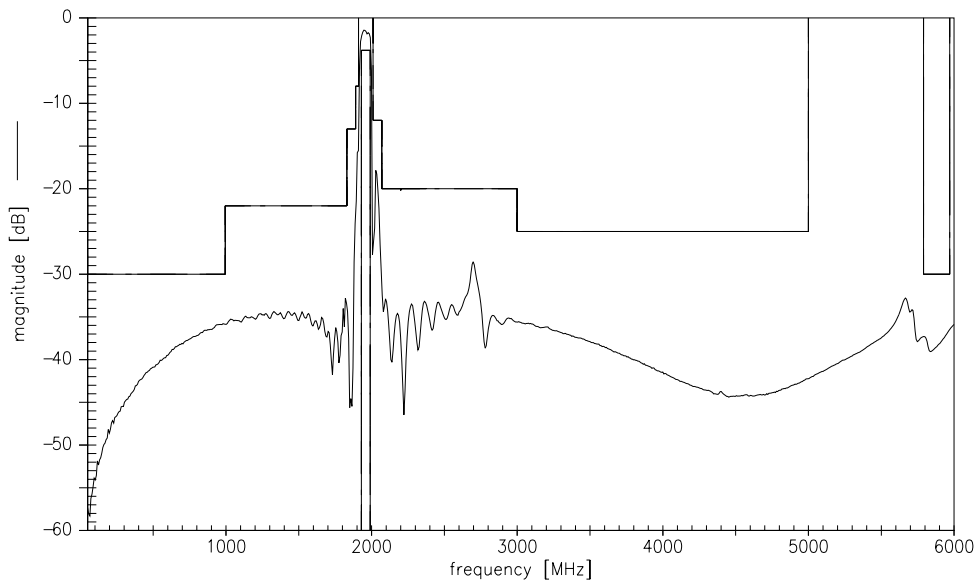
** -2,3 dB (min.) and 2,3 dB (max.) @ 25 °C



Transfer function Filter 2 (PCS)



Transfer function Filter 2 (PCS) - wideband





SAW Components

B7653

Low-Loss Dual Band Filter for Mobile Communication

881,5 & 1960,0 MHz

Data Sheet



Published by EPCOS AG

Surface Acoustic Wave Components Division, SAW MC WT

P.O. Box 80 17 09, 81617 Munich, GERMANY

© EPCOS AG 2003. Reproduction, publication and dissemination of this brochure and the information contained therein without EPCOS' prior express consent is prohibited.

Purchase orders are subject to the General Conditions for the Supply of Products and Services of the Electrical and Electronics Industry recommended by the ZVEI (German Electrical and Electronic Manufacturers' Association), unless otherwise agreed.

This brochure replaces the previous edition.

For questions on technology, prices and delivery please contact the Sales Offices of EPCOS AG or the international Representatives.

Due to technical requirements components may contain dangerous substances. For information on the type in question please also contact one of our Sales Offices.