



# SAW Components

Data Sheet B3666





SAW Components

B3666

Low-Loss Filter

82,20 MHz

Data Sheet

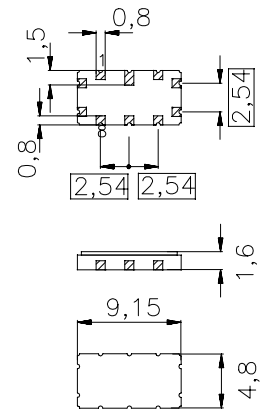
Ceramic SMD package QCC10B

Features

- Low-loss IF filter
- Ceramic SMD package
- Balanced or unbalanced operation possible
- Low insertion attenuation, high selectivity

Terminals

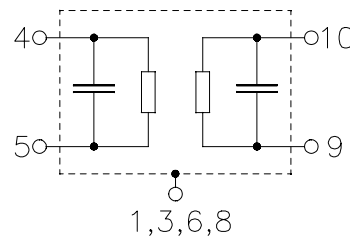
- Gold-plated



Dimensions in mm, approx. weight 0,23 g

Pin configuration

- |         |                |
|---------|----------------|
| 4, 5    | Input          |
| 9,10    | Output         |
| 1,3,6,8 | Case ground    |
| 2,7     | To be grounded |



Type	Ordering code	Marking and Package according to	Packing according to
B3666	B39820-B3666-Z710	C61157-A7-A49	F61064-V8035-Z000

Electrostatic Sensitive Device (ESD)

Maximum ratings

Operable temperature range	$T$	- 30/+ 80	°C
Storage temperature range	$T_{stg}$	- 40/+ 85	°C
DC voltage	$V_{DC}$	0	V
Source power	$P_s$	10	dBm


**SAW Components**
**B3666**
**Low-Loss Filter**
**82,20 MHz**
**Data Sheet**
**Characteristics**

Reference temperature:

$$T = -10 \dots +80 \text{ } ^\circ\text{C}$$

Terminating source impedance:

$$Z_S = 50 \text{ } \Omega \text{ unbalanced and matching network}$$

Terminating load impedance:

$$Z_L = 50 \text{ } \Omega \text{ unbalanced and matching network}$$

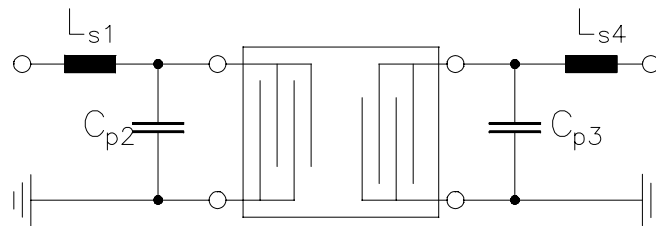
		min.	typ.	max.	
<b>Nominal frequency</b>	$f_N$	—	82,2	—	MHz
<b>Minimum insertion loss</b>	$\alpha_{\min}$	—	3,7	5,0	dB
<b>3dB bandwidth</b>		30	50	—	kHz
<b>Amplitude variation (p-p)</b> $f_N - 15 \text{ kHz} \dots f_N + 15 \text{ kHz}$	$\Delta\alpha$	—	0,9	3,0	dB
<b>Amplitude ripple (peak to adjacent valley)</b> $f_N - 15 \text{ kHz} \dots f_N + 15 \text{ kHz}$	$\Delta\alpha$	—	0,0	1,5	dB
<b>Absolute group delay (at <math>f_N</math>)</b>	$\tau$	—	16	—	$\mu\text{s}$
<b>Group delay ripple (p-p)</b> $f_N - 11 \text{ kHz} \dots f_N + 11 \text{ kHz}$	$\Delta\tau$	—	1,6	10	$\mu\text{s}$
<b>Relative attenuation (relative to <math>\alpha_{\min}</math>)</b>	$\alpha_{\text{rel}}$				
$f_N - 1000 \text{ kHz} \dots f_N - 925 \text{ kHz}$		40	70	—	dB
$f_N - 925 \text{ kHz} \dots f_N - 885 \text{ kHz}$		70	75	—	dB
$f_N - 885 \text{ kHz} \dots f_N - 700 \text{ kHz}$		40	70	—	dB
$f_N - 700 \text{ kHz} \dots f_N - 400 \text{ kHz}$		30	65	—	dB
$f_N - 400 \text{ kHz} \dots f_N - 120 \text{ kHz}$		40	60	—	dB
$f_N - 120 \text{ kHz} \dots f_N - 60 \text{ kHz}$		20	34	—	dB
$f_N + 60 \text{ kHz} \dots f_N + 120 \text{ kHz}$		20	29	—	dB
$f_N + 120 \text{ kHz} \dots f_N + 150 \text{ kHz}$		40	57	—	dB
$f_N + 150 \text{ kHz} \dots f_N + 400 \text{ kHz}$		30	55	—	dB
$f_N + 400 \text{ kHz} \dots f_N + 1000 \text{ kHz}$		40	55	—	dB
<b>Intermodulation distortion</b> Intermodulation in the composit signal by $f_N \pm 60$ kHz and $f_N \pm 120$ kHz, each of -20 dBm			—	-90	dB
<b>Temperature coefficient of frequency <sup>1)</sup></b>	$TC_f$	—	-0,036	—	ppm/K <sup>2</sup>
<b>Turnover temperature</b>	$T_0$	—	30	—	$^\circ\text{C}$

<sup>1)</sup> Temperature dependance of  $f_c$ :  $f_c(T) = f_c(T_0)(1 + TC_f(T - T_0)^2)$



Data Sheet

**Matching network** (element values depend on pcb layout)



$$L_{s1} = 470 \text{ nH}$$

$$C_{p2} = 3,9 \text{ pF}$$

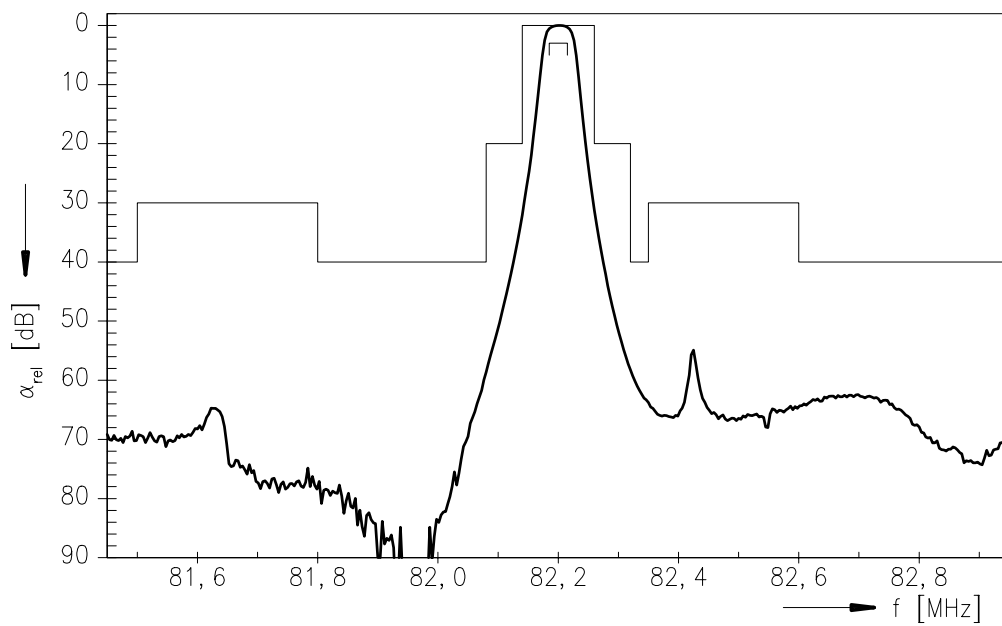
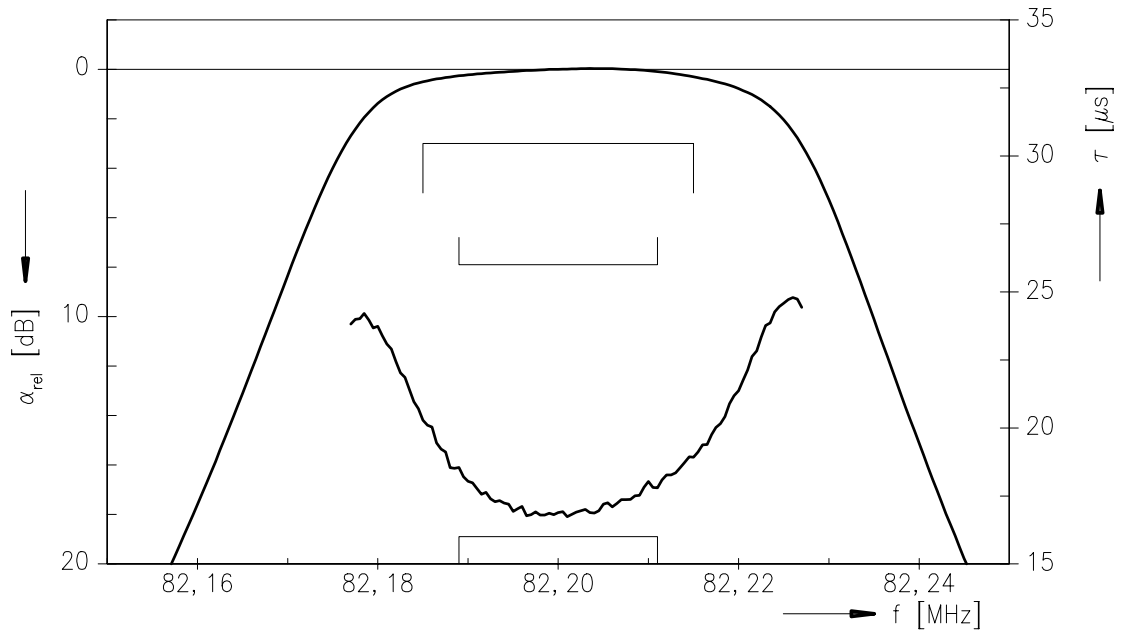
$$C_{p3} = 3,9 \text{ pF}$$

$$L_{s4} = 470 \text{ nH}$$



Data Sheet

Transfer function





**SAW Components**

**B3666**

**Low-Loss Filter**

**82,20 MHz**

**Data Sheet**

**Published by EPCOS AG**  
**Surface Acoustic Wave Components Division, OFW E NK**  
**P.O. Box 80 17 09, D-81617 München**

© EPCOS AG 1999. All Rights Reserved.

As far as patents or other rights of third parties are concerned, liability is only assumed for components per se, not for applications, processes and circuits implemented within components or assemblies.

The information describes the type of component and shall not be considered as assured characteristics.

Terms of delivery and rights to change design reserved.

For questions on technology, prices and delivery please contact the sales offices of EPCOS AG or the international representatives.

Due to technical requirements components may contain dangerous substances. For information on the type in question please also contact one of our sales offices.