



SAW Components

Data Sheet B7737, Pb-Free





SAW Components

B7737

Low-Loss Filter

915,0 MHz

Data Sheet

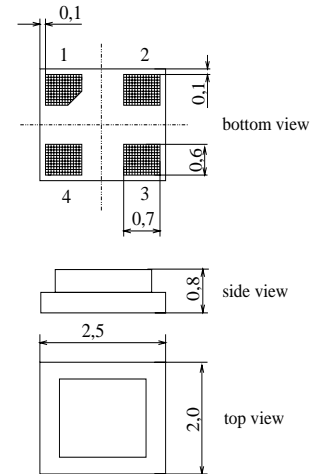
Chip Sized SAW Package DCS4H

Features

- Low-loss RF filter for iDEN
- Low amplitude ripple
- Usable passband 26 MHz
- No matching network required for operation at 50 Ω
- Pb-Free
- Package for **Surface Mounted Technology (SMT)**

Terminals

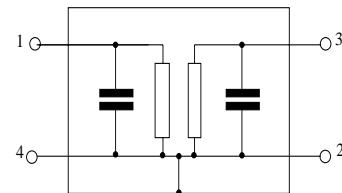
- Ni, gold-plated



Dimensions in mm, approx. weight 0,015g

Pin configuration

- 1 Input
- 3 Output
- 2,4 Ground



Type	Ordering code	Marking and Package according to	Packing according to
B7737	B39921-B7737-K710	C61157-A7-A136	F61074-V8189-Z000

Electrostatic Sensitive Device (ESD)

Maximum ratings

Operable temperature range	T	- 30 / + 85	°C	Machine Model, 10 pulses. Source and load impedance 50 Ω.
Storage temperature range	T_{stg}	- 40 / + 85	°C	
ESD voltage	V_{ESD}^*	100*	V	
Source power (cw)	P_S	0	dBm	

* - acc. to JESD22-A115A (Machine Model), 10 negative & 10 positive pulses



SAW Components

B7737

Low-Loss Filter

915,0 MHz

Data Sheet

Characteristics

Operating temperature range: $T = 25 \pm 2 \text{ }^\circ\text{C}$
 Terminating source impedance: $Z_S = 50 \text{ } \Omega$
 Terminating load impedance: $Z_L = 50 \text{ } \Omega$

		min.	typ.	max.	
Nominal frequency	f_N	—	915,0	—	MHz
Maximum insertion attenuation	α_{\max}				
	902,0 ... 928,0 MHz	—	2,0	2,5	dB
Amplitude ripple (p-p)	$\Delta\alpha$				
	902,0 ... 928,0 MHz	—	0,6	1,0	dB
Group delay ripple (p-p)	$\Delta\tau$				
	902,0 ... 928,0 MHz	—	15	50	ns
Return loss (Input and Output)					
	902,0 ... 928,0 MHz	12,0	14,0	—	dB
Absolute attenuation	α_{abs}				
	0,1 ... 702,0 MHz	50	64	—	dB
	738,0 ... 764,0 MHz	49	62	—	dB
	820,0 ... 846,0 MHz	42	60	—	dB
	990,0 ... 1010,0 MHz	42	60	—	dB
	1072,0 ... 1092,0 MHz	49	54	—	dB
	1128,0 ... 1804,0 MHz	45	50	—	dB
	1804,0 ... 1856,0 MHz	40	51	—	dB
	1856,0 ... 3000,0 MHz	30	40	—	dB
Temperature coefficient of frequency	TC_f	—	- 36	—	ppm/K



SAW Components

B7737

Low-Loss Filter

915,0 MHz

Data Sheet

Characteristics

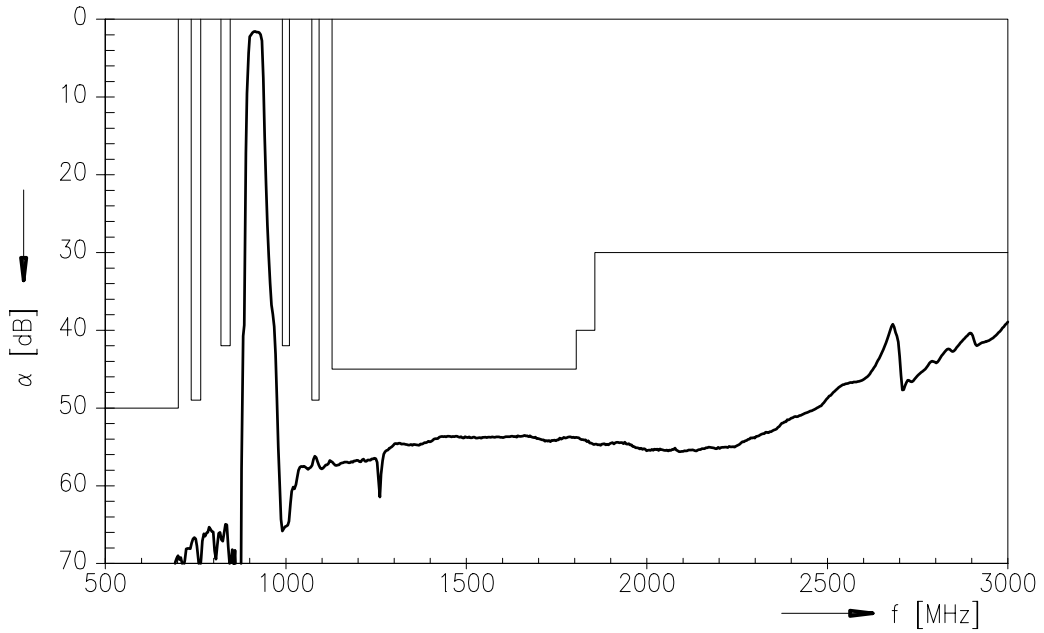
Operating temperature range: $T = -30 \dots +70 \text{ }^\circ\text{C}$
 Terminating source impedance: $Z_S = 50 \text{ } \Omega$
 Terminating load impedance: $Z_L = 50 \text{ } \Omega$

		min.	typ.	max.	
Nominal frequency	f_N	—	915,0	—	MHz
Maximum insertion attenuation	α_{\max}				
	902,0 ... 928,0 MHz	—	2,1	2,5	dB
Amplitude ripple (p-p)	$\Delta\alpha$				
	902,0 ... 928,0 MHz	—	0,6	1,0	dB
Group delay ripple (p-p)	$\Delta\tau$				
	902,0 ... 928,0 MHz	—	20	50	ns
Return loss (Input and Output)					
	902,0 ... 928,0 MHz	10,0	13,5	—	dB
Absolute attenuation	α_{abs}				
	0,1 ... 702,0 MHz	50	64	—	dB
	738,0 ... 764,0 MHz	49	62	—	dB
	820,0 ... 846,0 MHz	42	60	—	dB
	990,0 ... 1010,0 MHz	42	60	—	dB
	1072,0 ... 1092,0 MHz	49	54	—	dB
	1128,0 ... 1804,0 MHz	45	50	—	dB
	1804,0 ... 1856,0 MHz	40	51	—	dB
	1856,0 ... 3000,0 MHz	30	40	—	dB
Temperature coefficient of frequency	TC_f	—	- 36	—	ppm/K

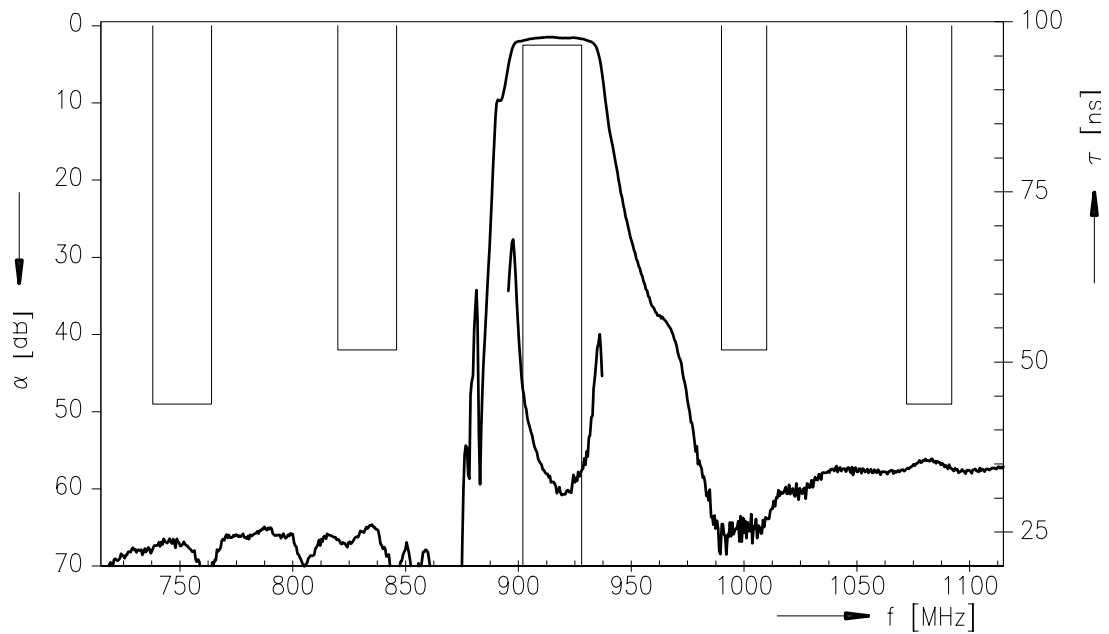


Data Sheet

Transfer function



Transfer function (pass band)





SAW Components

B7737

Low-Loss Filter

915,0 MHz

Data Sheet

Published by EPCOS AG

Surface Acoustic Wave Components Division, SAW MC PD

P.O. Box 80 17 09, D-81617 München

© EPCOS AG 2005. All Rights Reserved. Reproduction, publication and dissemination of this brochure and the information contained therein without EPCOS' prior express consent is prohibited.

The information contained in this brochure describes the type of component and shall not be considered as guaranteed characteristics. Purchase orders are subject to the General Conditions for the Supply of Products and Services of the Electrical and Electronics Industry recommended by the ZVEI (German Electrical and Electronic Manufacturers' Association), unless otherwise agreed.

This brochure replaces the previous edition.

For questions on technology, prices and delivery please contact the Sales Offices of EPCOS AG or the international Representatives.

Due to technical requirements components may contain dangerous substances. For information on the type in question please also contact one of our Sales Offices.