

Surface Mount

Monolithic Amplifier

NEW!

ERA-8SM

50Ω, Broadband, DC to 2 GHz



CASE STYLE : WW107

Features

- wide bandwidth, DC-2 GHz
- high gain, 31.5 dB at 100 MHz, reduces component count
- high power output, +12.5 dBm typ. at 1000 MHz
- low noise
- improved stability
- protection against power supply transients
- patent pending

Applications

- cellular
- PCS
- communication receivers & transmitters

Electrical Specifications @ 25°C

MODEL NO.	FREQ.* (GHz)	GAIN, dB Typical						MAXIMUM POWER (dBm) @1GHz	DYNAMIC RANGE @1GHz	VSWR (-1) Typ.				MAXIMUM RATING**		DC OPERATING POWER @ Pin 3***				THERMAL RESISTANCE	PRICE \$		
		over frequency, GHz								Output (1dB Comp.) Typ.	Input (no dmg.) Typ.	NF (dB) Typ.	IP3 (dBm) Typ.	In DC-1 GHz	Out DC-1 GHz	I mA	P mW	Cur- rent (mA)	Device Volt			Min	Max
ERA-8SM	DC-2	31.5	25	19	15	12	17	12.5	13	3.1	25	1.4	1.8	1.8	2.2	65	250	36	3.7	3.2	4.2	140	1.22

* Low frequency cutoff determined by external coupling capacitors.
 ** Permanent damage may occur if any of these limits are exceeded. These ratings are not intended for continuous normal operation.
 ***Reliability predictions and normal operating conditions are applicable at current specified.

Maximum Ratings

Operating Temperature -45°C to 85°C
 Storage Temperature -65°C to 150°C

Model Identification

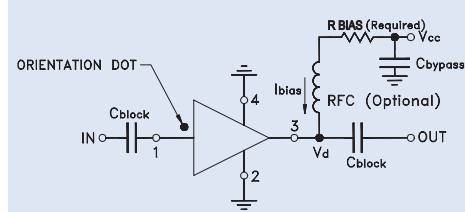
Model Marking†
 ERA-8SM E8

† Prefix letter (optional) designates assembly location. Suffix letters (optional) are for wafer identification.

Pin Configuration

RF IN	1
RF OUT	3
DC	3
GND EXT.	2,4

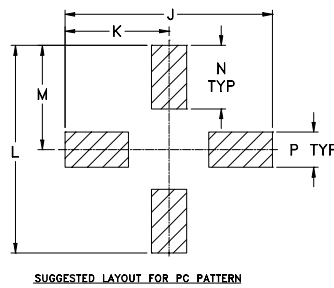
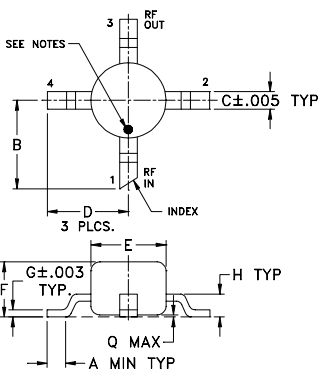
Typical Biasing Configuration



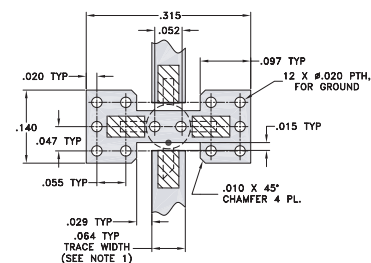
Resistor Values

Vcc	"1%" Res.
7	88.7
8	118
9	143
10	174
11	200
12	226
13	255
14	280
15	309

Outline Drawing



Suggested PCB Layout (PL-075)



NOTES:

1. TRACE WIDTH IS SHOWN FOR ROGERS RO4350 WITH DIELECTRIC THICKNESS 0.030" ± 0.002", COPPER: 1/2 OZ. EACH SIDE. FOR OTHER MATERIALS TRACE WIDTH MAY NEED TO BE MODIFIED.
2. IF YOUR PCB DESIGN RULES ALLOW, GROUND VIAS SHOULD BE PLACED UNDER THE LAND PATTERN FOR BETTER RF PERFORMANCE. OTHERWISE GROUND VIAS SHOULD BE PLACED AS CLOSE TO LAND PATTERN AS POSSIBLE.

- DENOTES PCB COPPER LAYOUT
- ▨ DENOTES COPPER LAND PATTERN FREE OF SOLDER MASK

Outline Dimensions (inch/mm)

A	B	C	D	E	F	G	H	J	K	L	M	N	P	Q	wt.
.012	.10	.020	.092	.085	.060	.007	.026	.235	.118	.235	.118	.072	.040	.020	grams
.30	2.54	.51	2.34	2.16	1.52	.18	.66	5.97	3.00	5.97	3.00	1.83	1.02	0.51	.015



Distribution Centers NORTH AMERICA 800-654-7949 • 417-335-5935 • Fax 417-335-5945 • EUROPE 44-1252-832600 • Fax 44-1252-837010

INTERNET <http://www.minicircuits.com>

ISO 9001 CERTIFIED

REV. A
 M90118
 ED-9366/14
 ERA-8SM
 MM/RS/CP
 031209