

### LC503QBL1-15G-A

#### Features

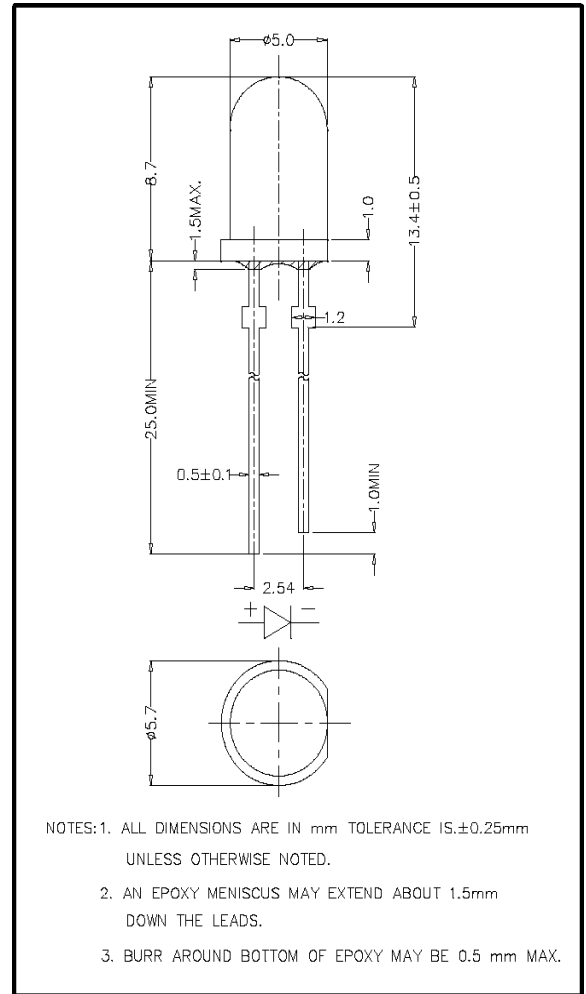
5mm Package  
 High Luminous Intensity  
 High Optical Power  
 Lead Free  
 Water Clear Lens  
 This product has Stand-Offs



**ATTENTION**  
 OBSERVE PRECAUTIONS  
 ELECTROSTATIC  
 SENSITIVE DEVICES

#### Applications

Decorative Lighting  
 General Purpose Lighting  
 Indoor Message Centers  
 Instrumentation  
 Medical Equipment



#### Maximum Ratings (Ta=25°C)

Characteristic	Symbol	Max.	Unit
Forward Current	I <sub>F</sub>	25	mA
Reverse Voltage	V <sub>R</sub>	5	V
Power Dissipation	P <sub>D</sub>	105.00	mW
Operating Temperature	T <sub>opr</sub>	-40 ~ +95	°C
Storage Temperature	T <sub>stg</sub>	-40 ~ +100	°C
Soldering Temperature	T <sub>sol</sub>	260	°C
Soldering Time	-	for 5 sec. max	-

#### Opto-Electrical Characteristics (Ta=25°C)

Characteristic	Symbol	Test Condition	Min	Typ	Max	Unit
Forward Voltage	V <sub>F</sub>	I <sub>F</sub> =20mA	-	3.60	4.20	V
Reverse Current	I <sub>R</sub>	V <sub>R</sub> =5V	-	-	100	μ A
Luminous Intensity	I <sub>v</sub>	I <sub>F</sub> =20mA	3000.00	7000.00	-	mcd
Viewing Angle	2θ <sup>1/2</sup>	-	-	15°	-	deg.
Peak Wavelength	λ <sub>p</sub>	I <sub>F</sub> =20mA	-	465	-	nm
Dominant Wavelength	λ <sub>d</sub>	I <sub>F</sub> =20mA	-	470	-	nm
Spectral Line Half Width	Δλ	I <sub>F</sub> =20mA	-	28	-	nm

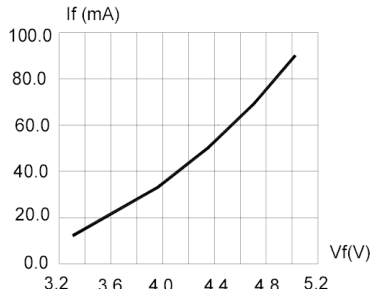


FIG.1 FORWARD CURRENT VS. FORWARD VOLTAGE.

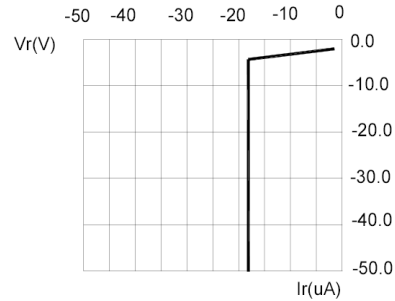


FIG.2 REVERSE CURRENT VS. REVERSE VOLTAGE.

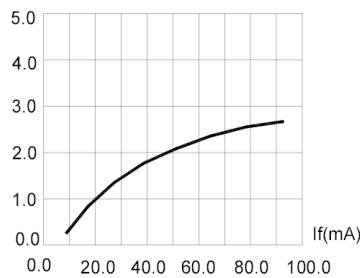


FIG.3 RELATIVE LUMINOUS INTENSITY VS. FORWARD CURRENT.

Half Power  $\Delta$  WL=28nm  
Domi WL= 470nm

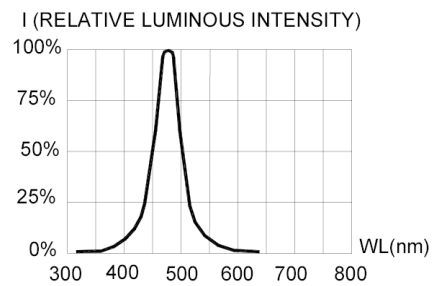


FIG.4 RELATIVE LUMINOUS INTENSITY VS. WAVELENGTH.

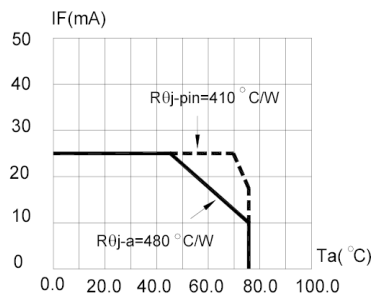


FIG.5 MAXIMUM FORWARD DC CURRENT VS AMBIENT TEMPERATURE (Tjmax=95°C)

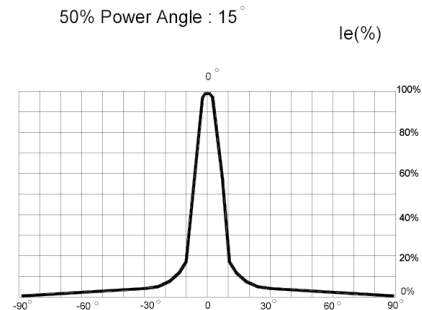


FIG.6 FAR FIELD PATTERN

1. Cathode PAD Area (0.18 X 0.18inch<sup>2</sup>)
2. Height above nominal seating plane in inches(0.3inch)