

Termination DIN

NEW!

LOUIS-50

50Ω

DC to 2 GHz

Maximum Ratings

Operating Temperature	-40°C to 85°C
Storage Temperature	-40°C to 85°C

Features

- wideband coverage, DC to 2 GHz
- return loss, 33 dB typ. up to 1 GHz and 27 dB typ. up to 2 GHz



CASE STYLE: LL987
CONNECTOR: DIN Male w/retaining sleeve
PRICE: \$11.95 ea. QTY (1-9)

Applications

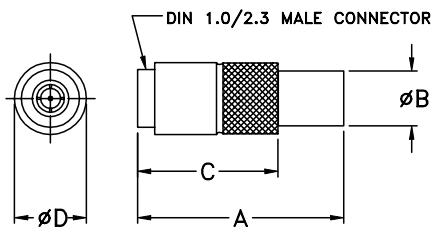
- cellular communications
- satellite communications
- test set-up

Electrical Specifications (T_{AMB}=25°C)

MODEL NO.	FREQUENCY (GHz)	IMPEDANCE (OHMS)	RETURN LOSS (dB) MIN.			POWER RATING* (W)
			DC-0.5 GHz	DC-1 GHz	DC-2 GHz	
LOUIS-50	DC-2	50	28	28	21	0.125

* Up to 70°C, derate linearly to 80% at 85°C

Outline Drawing



Outline Dimensions (inch/mm)

A	B	C	D	wt.
inch	inch	inch	inch	grams
.94	.25	.64	.33	6.5
23.80	6.35	16.27	8.30	

Typical Performance Data

FREQUENCY (MHz)	RETURN LOSS (dB)	
	\bar{X}	σ
1.00	59.80	6.70
100.00	43.20	0.87
250.00	37.10	0.51
500.00	32.10	0.52
1000.00	27.50	0.52
1250.00	26.20	0.53
1500.00	25.40	0.58
1750.00	24.80	0.69
2000.00	24.40	0.90

