

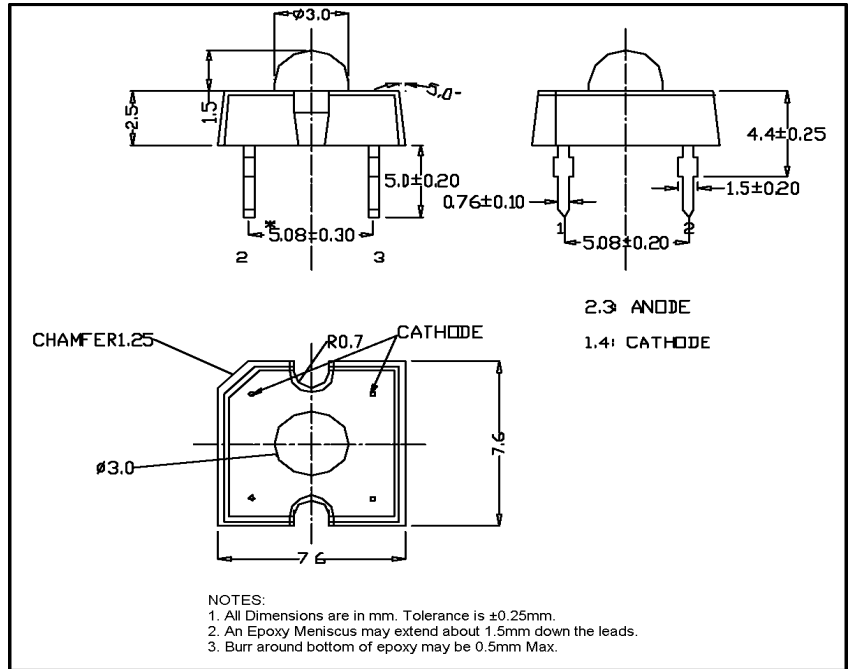
LP377PPG1-60G

Features

Water Clear Lens
 Low Profile
 4 Pin Plastic Package
 High Flux Output
 High Current Operation

Applications

Automotive Interior Exterior Lighting
 Rail Signals
 Traffic Control Devices
 Channel Letters
 Strip Lighting
 Architectural Lighting



Maximum Ratings (Ta=25°C)

Characteristic	Symbol	Max.	Unit
Forward Current	I _F	30	mA
Reverse Voltage	V _R	5	V
Power Dissipation	P _D	120.00	mW
Operating Temperature	T _{opr}	-20 ~ +75	°C
Storage Temperature	T _{stg}	-30 ~ +80	°C
Soldering Temperature	T _{sol}	260	°C
Soldering Time	-	for 3 sec. max	-



ATTENTION

OBSERVE PRECAUTIONS
 ELECTROSTATIC
 SENSITIVE DEVICES

Opto-Electrical Characteristics (Ta=25°C)

Characteristic	Symbol	Test Condition	Min	Typ	Max	Unit
Forward Voltage	V _F	I _F =30mA	3.60	4.00	4.60	V
Reverse Current	I _R	V _R =5V	-	-	100	μA
Luminous Flux	Φ	I _F =30mA	1500.00	2500.00	-	mlm
Viewing Angle	2θ ^{1/2}	-	-	60°	-	deg.
Peak Wavelength	λ _p	I _F =30mA	-	520	-	nm
Dominant Wavelength	λ _d	I _F =30mA	-	525	-	nm
Spectral Line Half Width	Δλ	I _F =30mA	-	38	-	nm

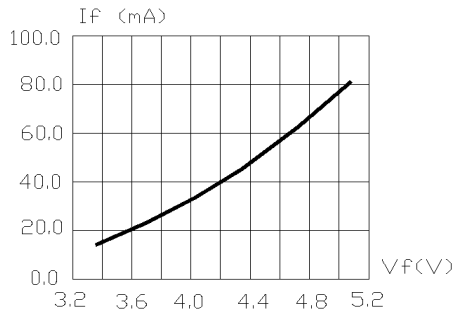


FIG.1 FORWARD CURRENT VS. FORWARD VOLTAGE.

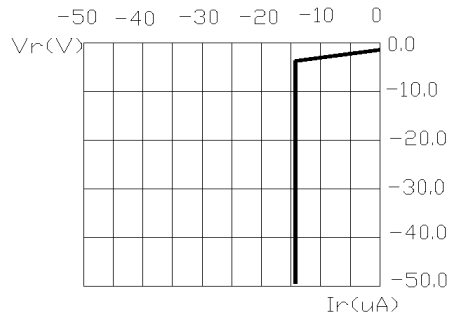


FIG.2 REVERSE CURRENT VS. REVERSE VOLTAGE.

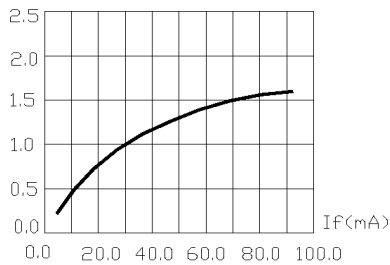


FIG.3 RELATIVE LUMINOUS FLUX VS. FORWARD CURRENT.

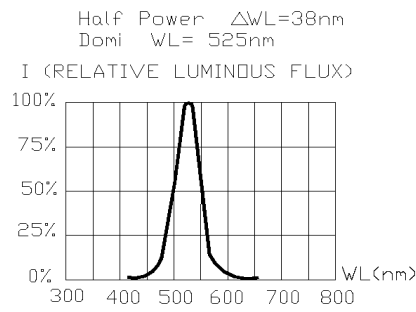


FIG.4 RELATIVE LUMINOUS FLUX VS. WAVELENGTH.

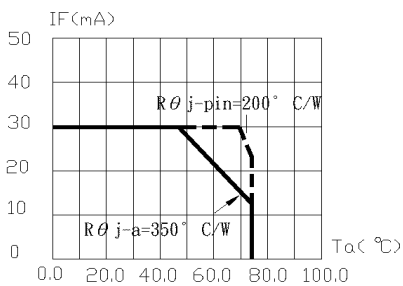


FIG.5 MAXIMUM FORWARD DC CURRENT VS AMBIENT TEMPERATURE ($T_{jmax}=95^{\circ}C$)

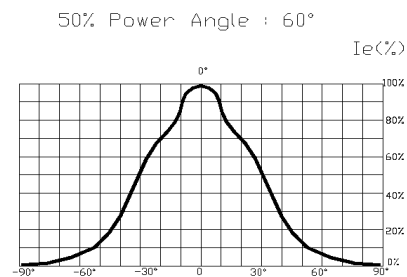


FIG.6 FAR FIELD PATTERN

1. Cathode PAD Area (0.18 × 0.18 × 2inch²)
2. Height above nominal seating plane in inches(0.3inch)