

Monolithic crystal filter

MQF10.7-5000/03 (preliminary specification)



Application

- 6 pol filter
- i.f.- filter
- use in mobile and stationary transceivers

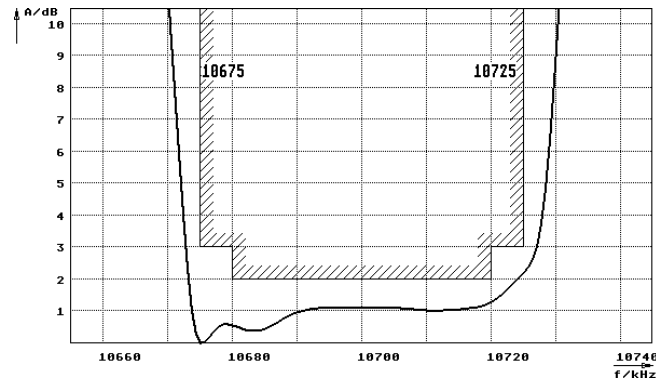
Limiting values		Unit	Value
Nominal frequency	f_0	MHz	10.7
Insertion loss		dB	< 3.5
Pass band at 3.0dB		kHz	$\pm > 25$
Ripple in pass band	$f_0 \pm 20 \text{ kHz}$	dB	< 2.0
Stop band attenuation	$f_0 - 62.5 \text{ kHz}$	dB	> 57
	$f_0 + 62.5 \text{ kHz}$	dB	> 60 except spurious
Alternate attenuation		dB	> 80 except spurious

Terminating impedance Z			
R1 C1		Ohm/pF	50 0
R2 C2		Ohm/pF	50 0

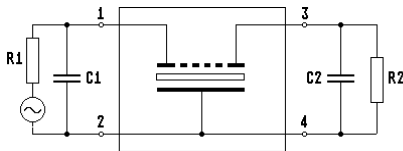
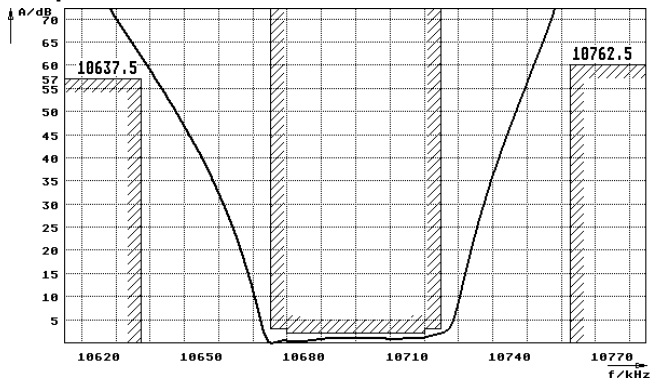
Operating temp. range		°C	-20... +70
-----------------------	--	----	------------

Characteristics MQF10.7-5000/03

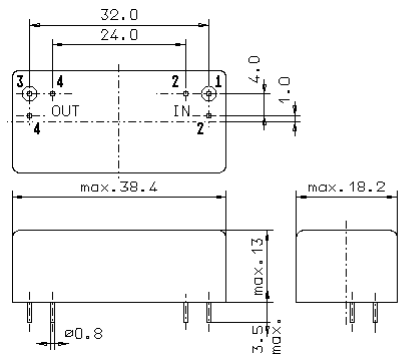
Pass band



Stop band



- Pin connections:
- 1 Input
 - 2 Ground-Input
 - 3 Output
 - 4 Ground-Output



GM17