

Monolithic crystal filter

MQF45.0-3000/12



Application

- 8 pol filter
- i.f.- filter
- use in mobile and stationary transceivers

Limiting values

		Unit	Value
Center frequency	f_0	MHz	45.0
Insertion loss		dB	≤ 3.0
Pass band at 3.0 dB		kHz	± 15.00
Ripple in pass band	$f_0 \pm 10.00$ kHz	dB	≤ 1.0
Stop band attenuation	$f_0 \pm 25$ kHz	dB	≥ 35
	$f_0 \pm 35$ kHz	dB	> 65 except spurious
Alternate attenuation		dB	> 80 except spurious

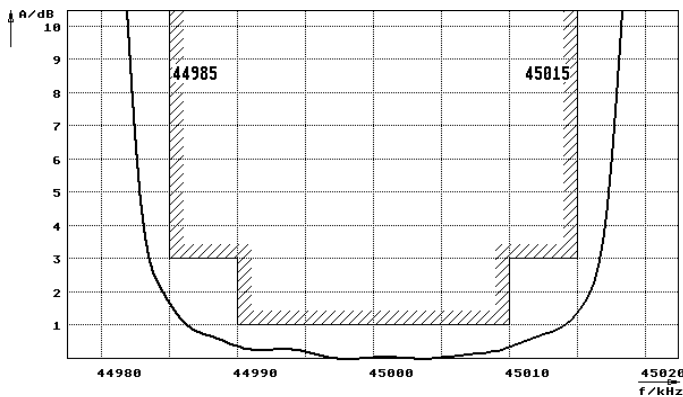
Terminating impedance Z

R1 C1	Ohm/pF	470 3
R2 C2	Ohm/pF	470 3

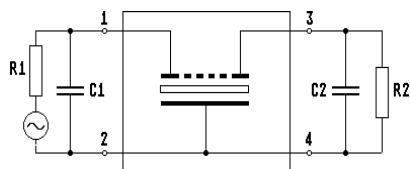
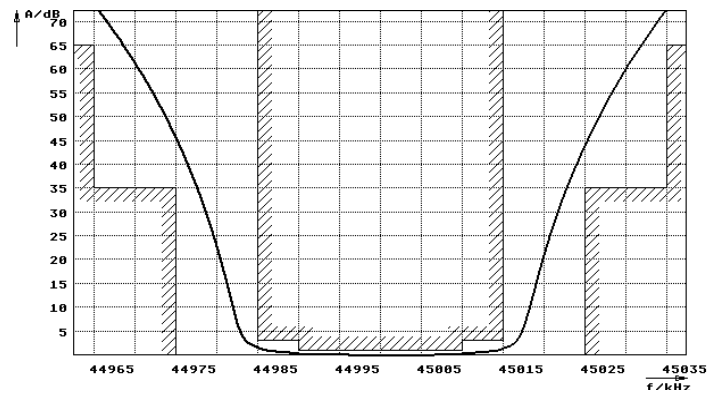
Operating temp. range	° C	-20... +70
-----------------------	-----	------------

Characteristics MQF45.0-3000/12

Pass band



Stop band



- Pin connections:
- 1 Input
 - 2 Input-E
 - 3 Output
 - 4 Output-E

