

Monolithic crystal filter

MQF45.0-5000/12



Application

- 6 pol filter
- i.f.- filter
- use in mobile and stationary transceivers

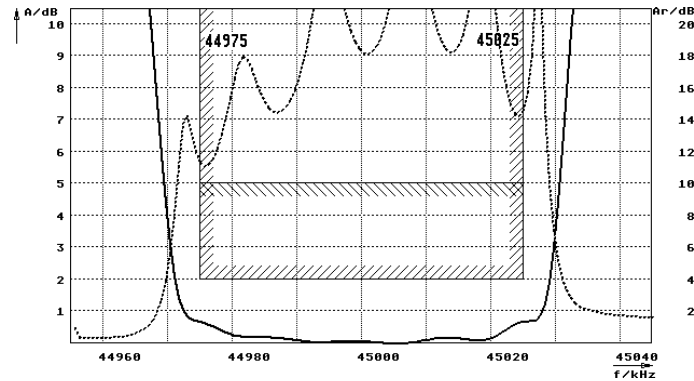
| Limiting values | | Unit | Value |
|-----------------------|--------------------------------------|------|----------------------|
| Nominal frequency | f_0 | MHz | 45.0 |
| Insertion loss | (at smallest attenuation) | dB | < 3.0 |
| Pass band at 2.0dB | | kHz | $\pm > 25$ |
| Ripple in pass band | $f_0 \pm 25$ kHz | dB | < 2.0 |
| Stop band attenuation | $f_0 \pm 100$ kHz | dB | > 75 |
| Alternate attenuation | | dB | > 80 except spurious |
| Spurious responses | 45.550 to 45.750 MHz | dB | > 40 |
| Return loss | $f_0 \pm 25$ kHz | dB | > 10 |
| IP3 | $f_0 \pm 100$ kHz; $f_0 \pm 200$ kHz | dBm | > 30 |

| | | | |
|-------------------------|--|--------|---------|
| Terminating impedance Z | | | |
| R1 C1 | | Ohm/pF | 50 0 |
| R2 C2 | | Ohm/pF | 50 0 |

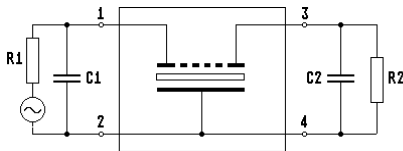
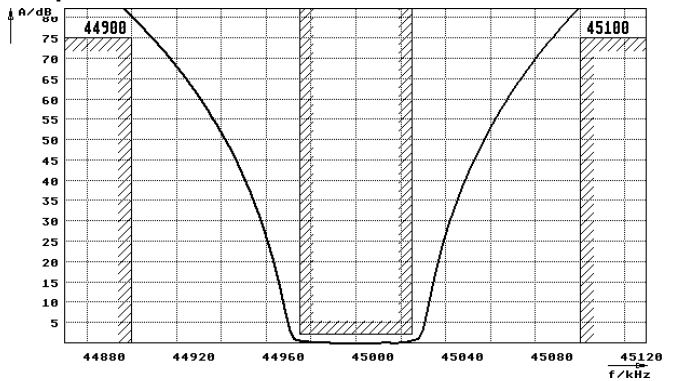
| | | | |
|-----------------------|--|----|------------|
| Operating temp. range | | °C | -40... +85 |
|-----------------------|--|----|------------|

Characteristics MQF45.0-5000/12

Pass band



Stop band



- Pin connections:
- 1 Input
 - 2 Ground-Input
 - 3 Output
 - 4 Ground-Output

