

PA1132 1800-2000 MHz.

Linear Power Amplifier



Features (typical values)

High Frequency Operation 2000 MHz.
 High Output Power +33.0 dBm.
 High IP3 +48.0 dBm.
 Low Cost

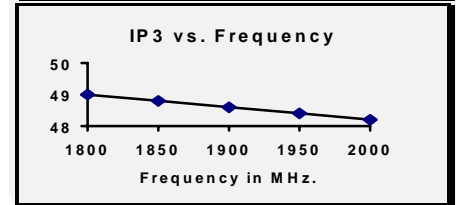
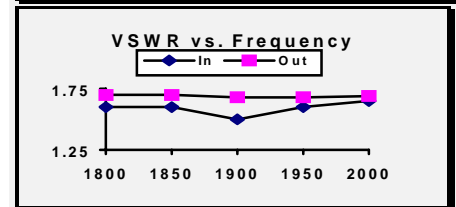
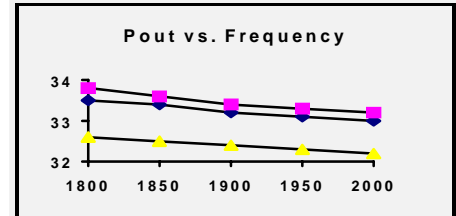
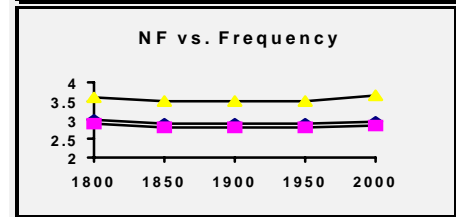
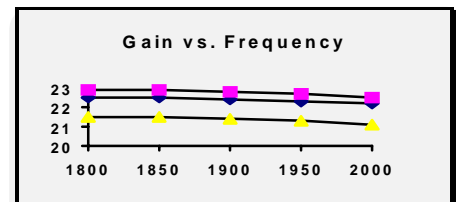
Electrical Specifications (Referenced to 50 ohms)

| Parameter | Typical Value | Min. Value | Max. Value | Units |
|-------------------|---------------|------------|------------|--------|
| Frequency | | 1800 | 2000 | MHz. |
| Gain | 22.0 | 20.0 | | dB. |
| Gain Flatness | ±0.3 | | ±0.5 | dB. |
| Reverse Isolation | 25 | | | dB. |
| Pout @ 1dB. comp. | 33.0 | 32.0 | | dBm. |
| Noise Figure | 3.0 | | 4.0 | dB. |
| IP3 | +48.0 | +44.0 | | dBm. |
| VSWR | 1.8:1 | | 2.0:1 | |
| Supply Req'd | +12/725 | | +12/850 | v./mA. |

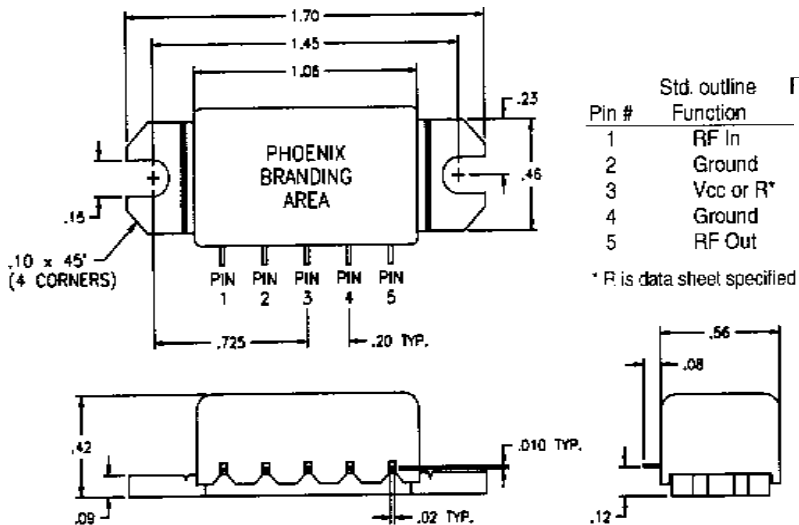
IP3 measured with 2 tones @+20 dBm. per tone spaced 1 MHz. apart
 Min and max values from 0 to 85 degrees C

Typical Performance Curves

0°C +25°C +85°C



Outline Drawings



Maximum Ratings

Storage Temperature -40C to +85C
 DC Voltage +15 volts
 RF Input Power +15 dBm.
 Case Temperature +95C