



# TMX U388

SAW Front-End Filter – European Wireless Receivers - RF  
*Specification (Rev-3)*

- ▣ Technical overview .....P01
- ▣ Configuration .....P01
- ▣ Typical Response .....P02
- ▣ Package Drawing.....P03

# TMX U388

## SAW Front-End Filter - European Wireless Receivers - RF Specification (Rev-3)

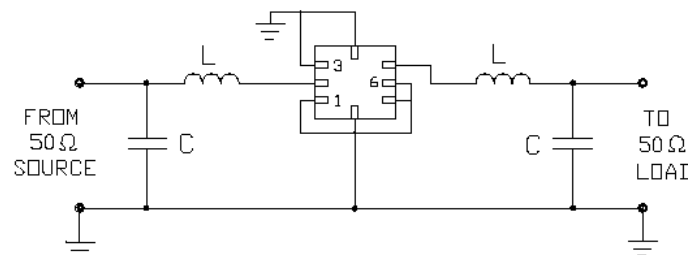
February 08<sup>th</sup>, 2005

Electrical Parameters	Unit	Minimum	Typical <sup>(1)</sup>	Maximum
Source Impedance (single ended)	$\Omega$	-	50 <sup>(2)</sup>	-
Load Impedance (single ended)	$\Omega$	-	50 <sup>(2)</sup>	-
Center Frequency fo	MHz	-	433.92	-
<b>Relative Attenuation</b>				
From 10.0 MHz to 414.0 MHz	dB	45.0	50.0	-
From 414.0 MHz to 428.0 MHz	dB	40.0	45.0	-
From 428 MHz to 432.92 MHz	dB	15.0	20.0	-
<u>FROM 434.92 MHz TO 442.0 MHz</u>	dB	10.0	15.0	-
From 442.0 MHz to 550.0 MHz	dB	35.0	40.0	-
From 550.0 MHz to 1000.0 MHz	dB	45.0	50.0	-
Insertion Loss in 433.80 MHz – 434.12 MHz	dB	-	2.0	3.5
<b>Pass Band</b>				
From 433.76 MHz to 434.16 MHz	dB	-	1.0	2.0
<b>External Impedance Match</b>				
Series Inductance L	nH	-	33	-
Shunt Capacitance C	pF	-	5.6	-
Temperature Coefficient of Frequency	Ppm/K <sup>2</sup>	-	-0.03	-
<b>Package type &amp; size</b>				
Length x Width	mm <sup>2</sup>	-	5.0 x 5.0	-
Height	mm	-	1.3	1.5
<b>Pin Out</b>				
Input	2	Output	5	
Input Ground	1	Output Ground	6	
Case Ground	1,3,4,6,7,8	To Be Grounded	1,3,4,6,7,8	

**Notes :**

- (1) Typical values are nominal performances at room temperature
- (2) External matching circuit is required (see drawing below)

### 50 $\Omega$ / 50 $\Omega$ Configuration



# TMX U388

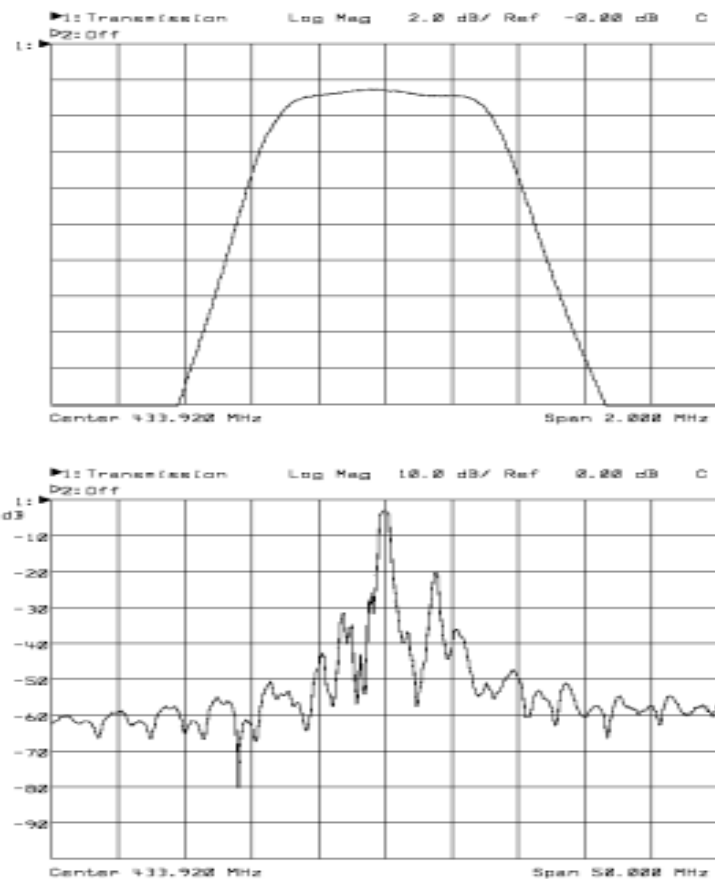
SAW Front-End Filter - European Wireless Receivers - RF  
Specification (Rev-3)

February 08<sup>th</sup>, 2005

## Maximum Ratings

Rating		Unit	Value
Operating Temperature Range	$T_A$	-40 to +85	°C
Storage Temperature Range	$T_{stg}$	-45 to +85	°C
DC Voltage	$V_{DC}$	10	V
AC Voltage	$V_{PP}$	10 (50Hz / 60 Hz)	V
Input Power		10	dBm

## TYPICAL S21 RESPONSE



# TMX U388

SAW Front-End Filter - European Wireless Receivers - RF  
Specification (Rev-3)

February 08<sup>th</sup>, 2005

## Package Drawing

Unit: mm

