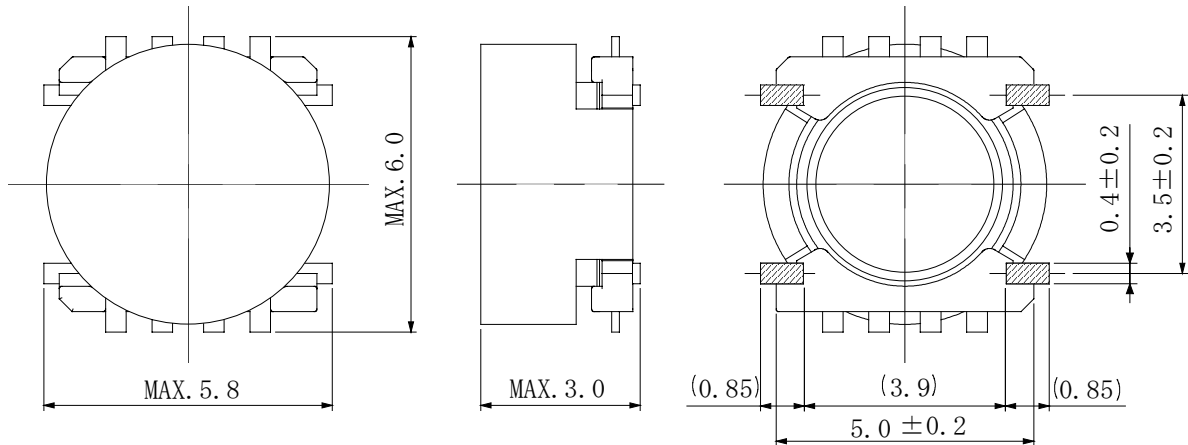
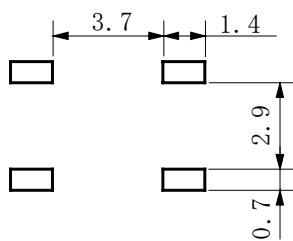
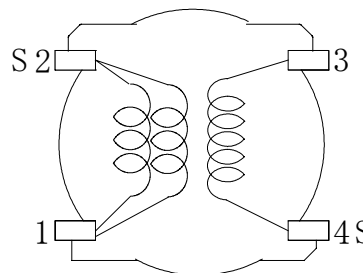


**Type: CMS5D28**
**◆ Product Description**

- 5.8×6.0mm Max.(L×W), 3.0mm Max. Height .
- In addition to the typical versions of parameters shown here, custom parameters are available to meet your exact requirements


**◆ Feature**

- Low loss ferrite core used.
- Special winding technical for high reliability.
- Step-up transformer for DSC strobe light.
- RoHS Compliance

**◆ Dimensions (mm)**

**◆ Land Pattern (mm)**

**◆ Schematics (Bottom)**


\* Winding start is #2 and #4.

**◆ Specification**

Sample No.	Stamp	Inductance ( $\mu\text{H}$ )(2-1) 1kHz	D.C.R. ( $\text{m}\Omega$ ) (2-1)	Leakage Inductance ( $\mu\text{H}$ )(2-1) 100kHz	DC superposition permission current (1-2)(A) ※1
PS06-279	279	$8.0 \pm 15\%$	$125 \pm 15\%$	160nH Max.	1.8

※1. DC superposition permission current : this indicates the value of current at which the inductance decreases to 80% of its initial value at DC superposition.