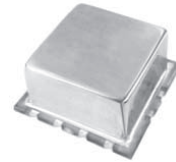


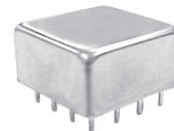
# POWER DIVIDERS

## 0° : 8-WAY



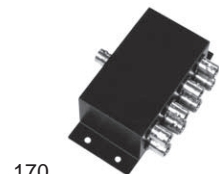
### SURFACE MOUNT

FREQUENCY RANGE (MHz)	ISOLATION (dB)			INSERTION LOSS (dB)			PHASE UNBALANCE (Degrees)			AMPLITUDE UNBALANCE (dB)			PACKAGE	PIN-OUT (See Below)	MODEL
	LB TYP/MIN	MB TYP/MIN	UB TYP/MIN	LB TYP/MAX	MB TYP/MAX	UB TYP/MAX	LB MAX	MB MAX	UB MAX	LB MAX	MB MAX	UB MAX			
0.01-10	40/20	40/25	28/23	0.3/0.7	0.5/1.0	0.6/1.1	1.0	2.5	4.0	0.1	0.2	0.3	124S	1	DSS-9C1
0.01-30	33/20	30/25	35/23	0.3/0.6	0.7/0.9	0.8/1.0	1.5	3.0	4.0	0.3	0.2	0.3	124S	1	DSS-914
0.5-175	30/25	30/20	25/18	0.8/1.2	0.8/1.2	1.0/1.6	1.0	2.5	5.0	0.2	0.3	0.5	124S	1	DSS-9L2
1-200	30/25	30/20	25/20	0.8/1.2	0.8/1.2	1.0/1.5	1.5	3.0	6.0	0.2	0.3	0.4	124S	1	DSS-915
1-500	25/20	30/20	30/20	1.0/1.8	1.8/2.0	1.8/2.7	3.0	6.0	12.0	0.2	0.3	0.5	124S	1	DSS-916



### THROUGH HOLE MOUNT(16 - Pin)

FREQUENCY RANGE (MHz)	ISOLATION (dB)			INSERTION LOSS (dB)			PHASE UNBALANCE (Degrees)			AMPLITUDE UNBALANCE (dB)			PACKAGE	PIN-OUT (See Below)	MODEL
	LB TYP/MIN	MB TYP/MIN	UB TYP/MIN	LB TYP/MAX	MB TYP/MAX	UB TYP/MAX	LB MAX	MB MAX	UB MAX	LB MAX	MB MAX	UB MAX			
0.01-10	40/20	40/25	28/23	0.3/0.7	0.5/1.0	0.6/1.1	1.0	2.5	4.0	0.1	0.2	0.3	124	2	DSP-9C1
0.01-30	33/20	30/25	35/23	0.3/0.6	0.7/0.9	0.8/1.0	1.5	3.0	4.0	0.3	0.2	0.3	124	3	DSP-914
0.5-175	30/25	30/20	25/18	0.8/1.2	0.8/1.2	1.0/1.6	1.0	2.5	5.0	0.2	0.3	0.5	124	2	DSP-9L2
1-200	30/25	30/20	25/20	0.8/1.2	0.8/1.2	1.0/1.5	1.5	3.0	6.0	0.2	0.3	0.4	124	3	DSP-915
1-500	25/20	30/20	30/20	1.0/1.8	1.8/2.0	1.8/2.7	3.0	6.0	12.0	0.2	0.3	0.5	124	2	DSP-916



112

170

### COAXIAL CONNECTOR

FREQUENCY RANGE (MHz)	ISOLATION (dB)			INSERTION LOSS (dB)			PHASE UNBALANCE (Degrees)			AMPLITUDE UNBALANCE (dB)			PACKAGE	PIN-OUT (See Below)	MODEL
	LB TYP/MIN	MB TYP/MIN	UB TYP/MIN	LB TYP/MAX	MB TYP/MAX	UB TYP/MAX	LB MAX	MB MAX	UB MAX	LB MAX	MB MAX	UB MAX			
0.01-30	33/20	30/25	35/23	0.3/0.6	0.7/0.9	0.8/1.0	1.5	3.0	4.0	0.3	0.2	0.3	112	4	DSK-714*
1-200	30/25	30/20	25/20	0.8/1.2	0.8/1.2	1.0/1.5	1.5	3.0	6.0	0.2	0.3	0.3	112	4	DSK-715*
1-500	25/20	30/20	30/20	1.0/1.8	1.8/2.0	1.8/2.7	3.0	6.0	10.0	0.2	0.3	0.5	112	4	DSK-716*
5-200	30/20	25/20	25/20	0.4/0.7	0.5/0.9	0.7/1.2	4.0	6.0	10.0	0.15	0.2	0.3	170	2	DSK-773B■
30-1000	23/20	25/20	23/20	0.8/1.2	1.6/2.1	2.5/2.8	3.0	8.0	12.0	0.3	0.4	0.7	112	4	DSK-810S

Power Rating (All Models) = 1 Watt, max

\* Select female connector suffix:

"B" = BNC, "S" = SMA, "N" = Type N, "T" = TNC

■ 75 Ohm Model

For pin location and package outline drawings, see back pages.

PIN-OUT TABLE

	INPUT	OUTPUT	CASE GROUND	NOT USED
# 1	2	1,4,5,8,9,12,13,16	3, 14,15	-
# 2	2	1,4,5,8,9,12,13,16	3,6,7,14,15	10,11
# 3	2	1,4,5,8,9,12,13,16	All Other	-
# 4	1	2,3,4,5,6,7,8,9	-	-

LB = LF to 10 LF  
 MB = 10 LF to HF/2  
 UB = HF/2 to HF

