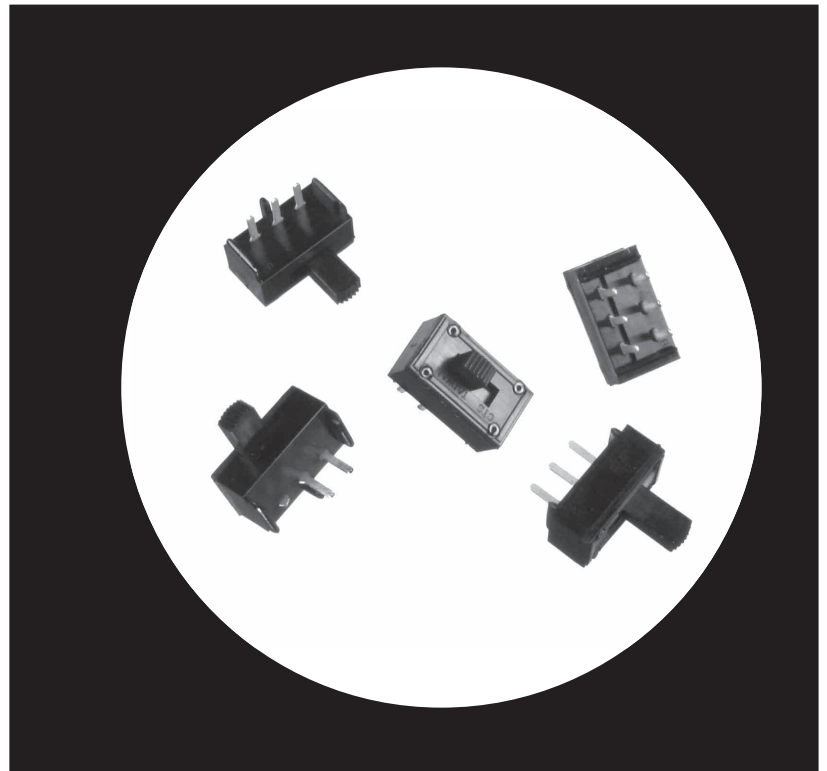


Miniature Slide Switches

Features

- UL and CSA approved for SPST and SPDT functions
UL file E10412
- Insulated case, UL grade 94V-2 fire retardant housing
- Dust-proof construction
- Metal to metal wiping contacts
- Withstands flow soldering without deformation
- High performance, low cost design
- RoHS Compliant



Electrical and Mechanical Specifications

Switch Function

- Single pole single throw
- Single pole double throw
- Double pole single throw (top actuated only)
- Double pole double throw (top actuated only)

Current Rating

- 1Amp @ 24VDC
- 1Amp @ 125VAC

Switch Contact Resistance

- 15 milliohm maximum initial
- 30 milliohm (typical) after life
 - (20,000 cycles @ 1Amp, 24VDC)
 - (6,000 cycles @ 1Amp, 125VAC)

Insulation Resistance

- 100 megohm minimum

Dielectric Strength

- 1,000 VAC (60Hz) for 1 minute

Switch Electrical Life

- 20,000 cycles min. @ 1Amp, 24 VDC full load
- 6,000 cycles min. @ 1Amp, 125 VAC full load

Temperature

- Operating: 0°C to +70°C
- Storage: -25°C to +125°C

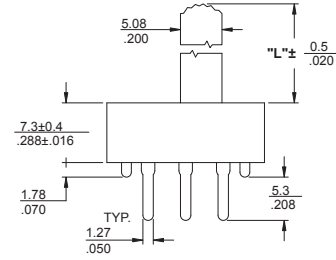
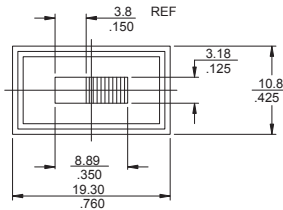
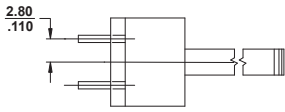
Operating Force

- SPST/SPDT/DPST:
220 gf - 500 gf (7.7 oz - 17.5 oz)
- DPDT:
220 gf - 600 gf (7.7 oz - 21 oz)

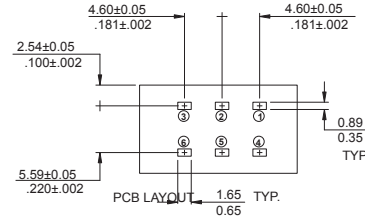
Materials

- Housing and Actuator - Black nylon 6/6 UL 94V-2
- Contactors - Silver plated phosphor bronze
- Terminal - Silver plated brass

TYPE 065T Top Actuated

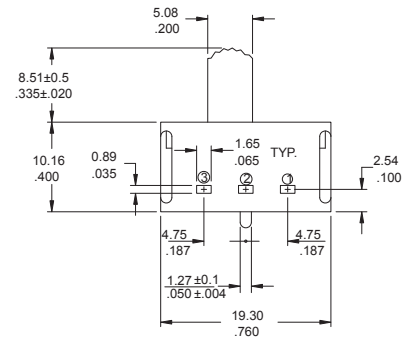
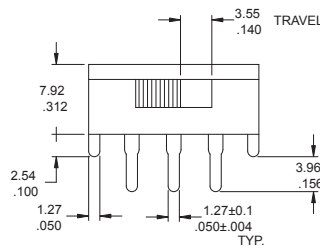
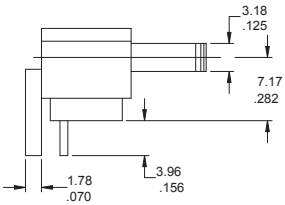


MODEL NO	SWITCH FUNCTION				REMARK
	POS1		POS2		
065T SPST	ON	① - ②	OFF	① - ②	TERM ③ ④ ⑤ ⑥ NOT PRESENT
065T SPDT	ON	① - ②	OFF	① - ②	TERM ④ ⑤ ⑥ NOT PRESENT
	OFF	② - ③	ON	② - ③	
065T DPST	ON	① - ②	OFF	① - ②	TERM ③ ⑥ NOT PRESENT
		④ - ⑤		④ - ⑤	
065T DPDT	ON	① - ②	OFF	① - ②	
		④ - ⑤		④ - ⑤	
	OFF	② - ③	ON	② - ③	
		⑤ - ⑥		⑤ - ⑥	



DIMENSION: $\frac{\text{mm}}{\text{INCH}}$

TYPE 065S Side Actuated



MODEL NO	SWITCH FUNCTION				REMARK
	POS1		POS2		
065S SPST	ON	① - ②	OFF	① - ②	TERM ③ NOT PRESENT
065S SPDT	ON	① - ②	ON	② - ③	

DIMENSION: $\frac{\text{mm}}{\text{INCH}}$

Ordering Information

065

T

SPST

A

SWITCH STYLE
T – TOP ACTUATED
S – SIDE ACTUATED

SWITCH FUNCTION

CODE	FUNCTION
SPST	SINGLE POLE SINGLE THROW
SPDT	SINGLE POLE DOUBLE THROW
DPST	DOUBLE POLE SINGLE THROW (TOP ACTUATED ONLY)
DPDT	DOUBLE POLE DOUBLE THROW (TOP ACTUATED ONLY)

SPST AND SPDT SWITCHES
UL FILE NO.E10412

ACTUATOR LENGTH "L"

TOP ACTUATED
A – .200" (5.08mm)
B – .500" (12.7mm)
C – .375" (9.53mm)

SIDE ACTUATED
BLANK
– .335" (8.51mm) ONLY