

SMD 808.00 MHz SAW FILTER

AFS808.0W01-TS3

*RoHS COMPLIANT



3.8 x 3.8 x 1.5mm

STANDARD SPECIFICATIONS:

CHARACTERISTICS	UNIT	MIN.	TYP.	MAX.
Center Frequency Fc	MHz	-	808.0	-
Pass Bandwidth	MHz	-	6.0	-
Insertion Loss (805MHz ~ 811MHz)	dB	-	4.5	6.0
Pass Band Ripple (805MHz ~ 811MHz)	dB	-	1.5	2.5
Rejection				
784.60 ~ 786.60 MHz	dB	40	44.0	-
795.30 ~ 796.30 MHz	dB	30	38.0	-
Temperature Coefficient of Frequency	ppm/k	-	-30	-
DC Permissive Voltage	V	10		
Operating Temperature Range	°C	-30°C to +80°C		
Storage Temperature Range	°C	-40°C to +85°C		
Maximum RF Power	dBm		0	

Electrostatic Sensitive Device. Handle with precaution.

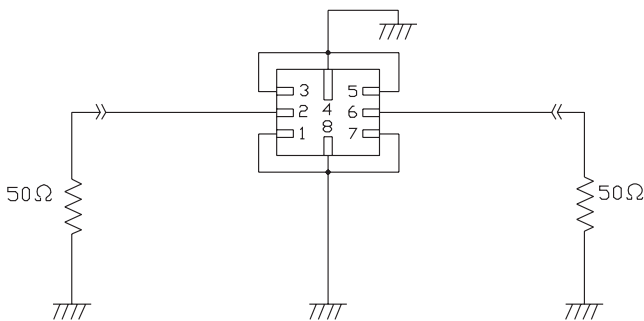
MARKING:

- 808 (808.0 Frequency in MHz)
- A ZYX (ZY: Date code Z for month from A to L; Y for year, i.e. 4 for 2004; X: Traceability code)

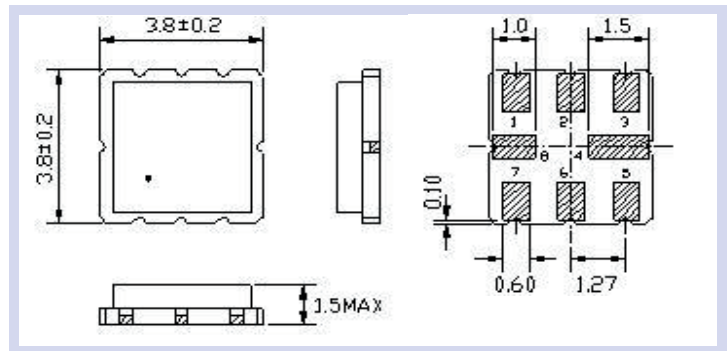
PIN NO.	CONNECTIONS
1	Ground
2	Input
3	Ground
4	Ground
5	Ground
6	Output

Terminals: Ni, Gold plated

TEST CIRCUIT:



DRAWING:



FREQUENCY CHARACTERISTICS:

