

Coaxial

# Power Splitter/Combiner

## ZAPD-50W

2 Way-0° 50Ω 4200 to 6000 MHz

### Maximum Ratings

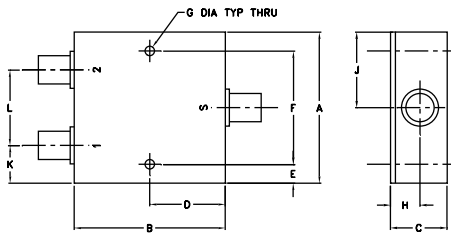
Operating Temperature	-55°C to 100°C
Storage Temperature	-55°C to 100°C
Power Input (as a splitter)	10W max.
Internal Dissipation	0.125W max.

Permanent damage may occur if any of these limits are exceeded.

### Coaxial Connections

SUM PORT	S
PORT 1	1
PORT 2	2

### Outline Drawing



### Outline Dimensions (inch/mm)

A	B	C	D	E	F	G	
2.00	2.00	.75	1.00	.25	1.500	.125	
50.80	50.80	19.05	25.40	6.35	38.10	3.18	
H	J	K	L				wt
.39	1.00	.50	1.00				grams
9.91	25.40	12.70	25.40				170.0

### Features

- low insertion loss, 0.3 dB typ.
- good isolation, 26 dB typ.
- up to 10W power input as splitter
- excellent amplitude unbalance, 0.1 dB typ.
- excellent phase unbalance, 1 deg. typ.
- excellent VSWR, 1.15:1 typ.
- rugged shielded case

### Applications

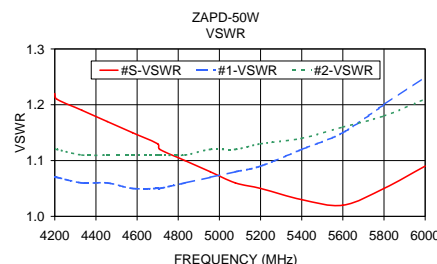
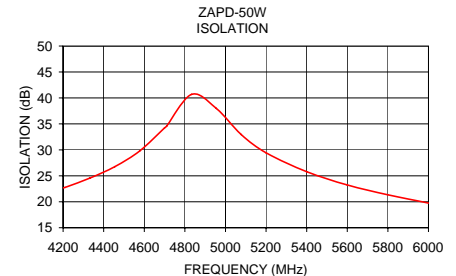
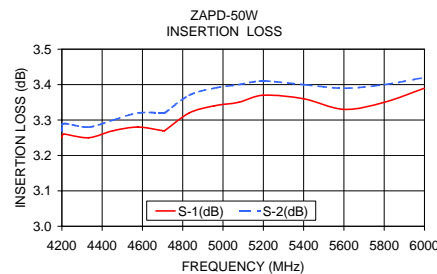
- wireless
- defense
- communications

### Electrical Specifications

FREQ. RANGE (MHz)	ISOLATION (dB)		INSERTION LOSS (dB) ABOVE 3.0 dB		PHASE UNBALANCE (Degrees)	AMPLITUDE UNBALANCE (dB)	VSWR (:1)			
	Typ.	Min.	Typ.	Max.			S		OUT	
$f_L$ - $f_U$					Max.	Max.	Typ.	Max.	Typ.	Max.
4200-6000	26	16	0.3	0.8	5	0.7	—	—	—	—

### Typical Performance Data

Frequency (MHz)	Insertion Loss (dB)		Amplitude Unbalance (dB)	Isolation (dB)	VSWR S	VSWR 1	VSWR 2
	S-1	S-2					
4200.00	3.25	3.27	0.02	22.67	1.22	1.07	1.12
4210.00	3.26	3.29	0.03	22.77	1.21	1.07	1.12
4332.50	3.25	3.28	0.03	24.57	1.19	1.06	1.11
4455.00	3.27	3.30	0.04	26.77	1.17	1.06	1.11
4577.50	3.28	3.32	0.04	29.78	1.15	1.05	1.11
4700.00	3.27	3.32	0.05	34.24	1.13	1.05	1.11
4710.00	3.27	3.32	0.06	34.56	1.12	1.05	1.11
4832.50	3.32	3.37	0.05	40.68	1.10	1.06	1.11
4955.00	3.34	3.39	0.05	37.99	1.08	1.07	1.12
5077.50	3.35	3.40	0.05	32.96	1.06	1.08	1.12
5200.00	3.37	3.41	0.04	29.43	1.05	1.09	1.13
5400.00	3.36	3.40	0.04	25.79	1.03	1.12	1.14
5600.00	3.33	3.39	0.06	23.24	1.02	1.15	1.16
5800.00	3.35	3.40	0.06	21.34	1.05	1.20	1.18
6000.00	3.39	3.42	0.04	19.75	1.09	1.25	1.21



### electrical schematic



**Mini-Circuits®**  
ISO 9001 ISO 14001 AS 9100 CERTIFIED

[minicircuits.com](http://minicircuits.com)

P.O. Box 350166, Brooklyn, New York 11235-0003 (718) 934-4500 Fax (718) 332-4661 For detailed performance specs & shopping online see Mini-Circuits web site



The Design Engineers Search Engine Provides ACTUAL Data Instantly From MINI-CIRCUITS At: [www.minicircuits.com](http://www.minicircuits.com)

IF/RF MICROWAVE COMPONENTS

REV. OR  
M94665  
ZAPD-50W  
HY/TD/CP  
080714