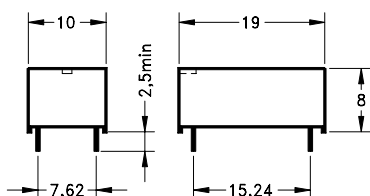
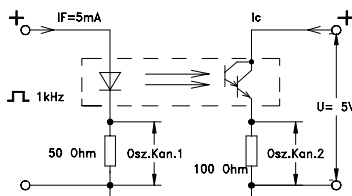


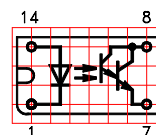
### Dimensions (mm)



### Test circuit



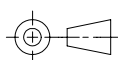
### Layout / Pitch 2,54 mm / Top View



MEDER-Label  
 Type  
 Prod.-Code-  
 EN60062  
 /Factory Code

**PTB 01 ATEX**  
**2049 U**

**0344** II (1) G  
 [EEEx ia] IIC



Pins:  $\varnothing$  0,65 mm / L 3,2 +0,8 -0,3 mm

Electrical Characteristics	Conditions (at $T_A = 25^\circ\text{C}$ )	Symbol	Min.	Typ.	Max.	Units
<b>Isolation Voltage Input / Output</b>		$V_{IO}$	4.000			VDC
Insulation Resistance Input / Output	RH 45%	$R_{IO}$	$10^{12}$			$\Omega$
Coupling Capacitance		$C_C$		0,3		pF
Collector-Emitter Saturation Voltage	$I_F = 5 \text{ mA}, I_C = 40 \text{ mA}$	$V_{CEsat}$		1,2		V
Collector Dark Current	$U_{CE} = 20 \text{ V}, R = 1 \text{ M}\Omega, I_F = 0 \text{ mA}$	$I_{CEO}$			1,5	$\mu\text{A}$
Cut-Off Frequency	$I_F = 10 \text{ mA}, U_{CE} = 5 \text{ V}, R_L = 100 \Omega$	$F_{CO}$		2		kHz
<b>Current Transfer Ratio <math>I_C / I_F</math></b>	$I_F = 5 \text{ mA}$	CTR	7			

Coupled Device					
Creeping Distance			14,5		mm
Air Path Input / Output			14,5		mm
Insulation through Thickness			5		mm

Switching Time					
Turn-on Time	$I_F = 10 \text{ mA}, U_{CE} = 5 \text{ V}, R_L = 100 \Omega$	$T_{on}$		19,5	$\mu\text{s}$
Turn-off Time	$I_F = 10 \text{ mA}, U_{CE} = 5 \text{ V}, R_L = 100 \Omega$	$T_{off}$		212	$\mu\text{s}$

Maximum Ratings Emitter					
Reverse Voltage		$V_R$			5 V
DC Forward Current		$I_F$			100 mA
Surge Forward Current	$t \leq 10 \mu\text{s}$	$I_{FS}$			500 mA
Power Dissipation		$P_{TOT}$			170 mW
Forward Voltage		$V_F$			1,5 V
Current Reduction			0,73		$\text{mA}/^\circ\text{C}$

Maximum Ratings Detector					
Collector-Emitter Voltage		$V_{CE}$	32		V
Emitter-Collector Voltage		$V_{EC}$	5		V
Collector Current		$I_C$			50 mA
Collector Peak Current	$t \leq 10 \text{ ms}$	$I_{CM}$			150 mA
Power Dissipation		$P_{TOT}$			100 mW
Power Reduction			0,91		$\text{mW}/^\circ\text{C}$

Environmental Data					
Ambient Temperatur Range		$T_A$	- 40		+ 85 $^\circ\text{C}$
Storage Temperatur Range		$T_{stg}$	- 40		+ 100 $^\circ\text{C}$
Soldering Temperature	5 sec. at				260 $^\circ\text{C}$
Cleaning					fully sealed
Material of Case					Plastics
Sealing Compound					Polyurethan
Material of Pins					Cu-alloy tinned
Remarks	Optocoupler approved according to PTB 01 ATEX 2049 U.				

Customer / Customer part number	Standard Part
---------------------------------	---------------