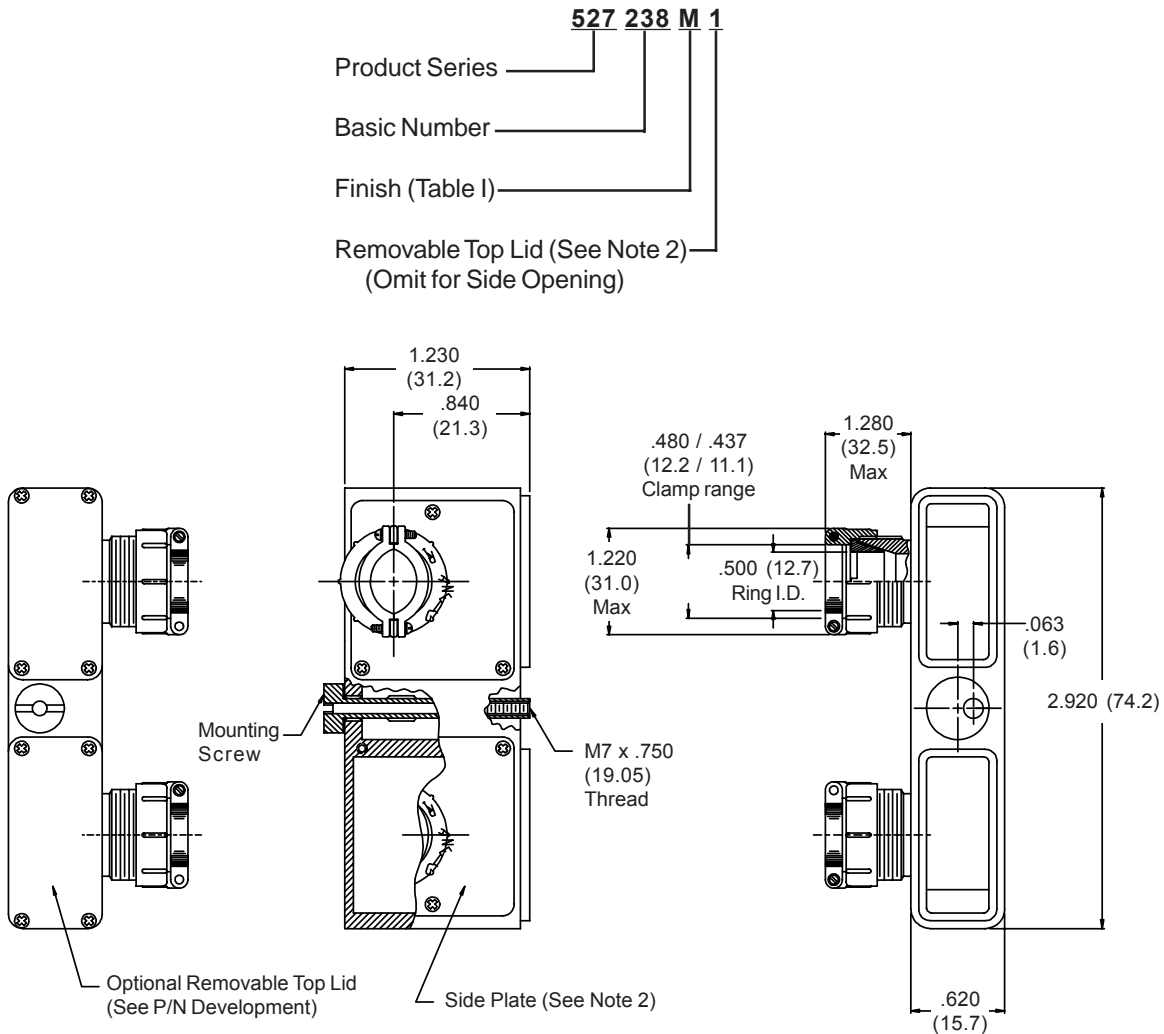


527-238 EMI/RFI Strain-Relief Backshell Assembly for Radial EPX2 Non-Environmental Connector



NOTES:

1. Metric dimensions (mm) are indicated in parentheses.
2. Side Plate will not be removable with Top Lid Option.

TABLE I: FINISH OPTIONS

| Symbol | Finish | Symbol | Finish |
|--------|---|--------|--|
| B | Cadmium Plate/Olive Drab | NC | Zinc Cobalt/Dark Olive Drab |
| C* | Black Anodize | NF | Cadmium Plate/Olive Drab over Electroless Nickel |
| G* | Anodic Hard Coat | T | Cadmium Plate/Bright over Electroless Nickel |
| J | Gold Iridite over Cadmium Plate over Electroless Nickel | U** | Cadmium Plate/Black |
| LF | Cadmium Plate/Bright over Electroless Nickel | ZN | Zinc-Nickel Alloy/Olive Drab |
| M | Electroless Nickel | | |
| N | Cadmium Plate/Olive Drab over Electroless Nickel | | |

*Anodize finish is not suitable for EMI shielding or grounding applications.
 **Applicable to corrosion resisting steel backshells and accessories. Consult factory for other available finishes.