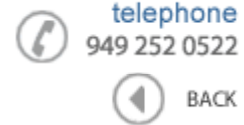


**Data Sheet**

Product Category: IF SAW Filter

Part Number	Package	Application	Last Modified
835-IF160.0M-K	35.0 x 12.8 Thru Hole	Base Station & Repeater	Jan. 01, 2007

TYPE :

160.0 MHz Bandpass Filter

PART NUMBER :

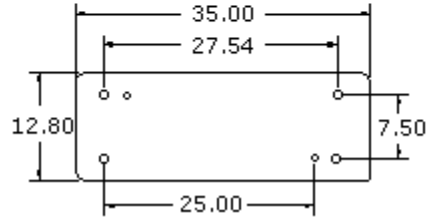
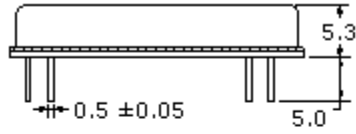
835-IF160.0M-K**OPERATING CONDITIONS / ELECTRICAL CHARACTERISTICS**

PARAMETERS	Minimum	Typical	Maximum	Units
Center Frequency (Fo)	159.9	160.0	160.1	MHz
Insertion Loss at Fo	-	23.7	26.0	dB
Storage Temperature	-40	-	+85	°C
Operating Temperature	-30	-	+70	°C
Source Impedance (single ended)*	-	50	-	ohm
Load Impedance (single ended)*	-	50	-	ohm
Temperature Coefficient	-	-0.03	-	ppm/°C
Amplitude Ripple (Fo±1.875 MHz)	-	0.5	1.0	dBp-p
Bandwidth at 1.0 dB	4.0	4.24	-	MHz
Bandwidth at 3.0 dB	4.2	4.42	-	MHz
Bandwidth at 40.0 dB	-	5.09	5.3	MHz
Ultimate Rejection	-	50	-	dB
Group Delay Variation (Fo±1.875 MHz)	-	130	200	ns
Adsolute Delay at Fo	-	3.19	-	us

* with Matching Network (Ref. Testing Environment Circuit as shown below). Those impedances could be modified with different impedances values and/or structures, if necessary.

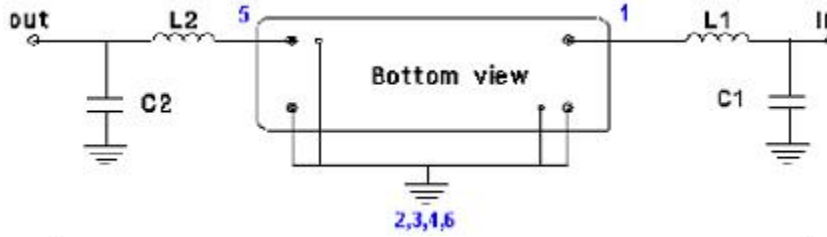
** Custom SAW IF Filters available. Contact Oscilent for assistance.

PACKAGE OUTLINE (mm)



PIN Descriptions: IN-1, OUT 5, GROUND -2,3,4,6,Case

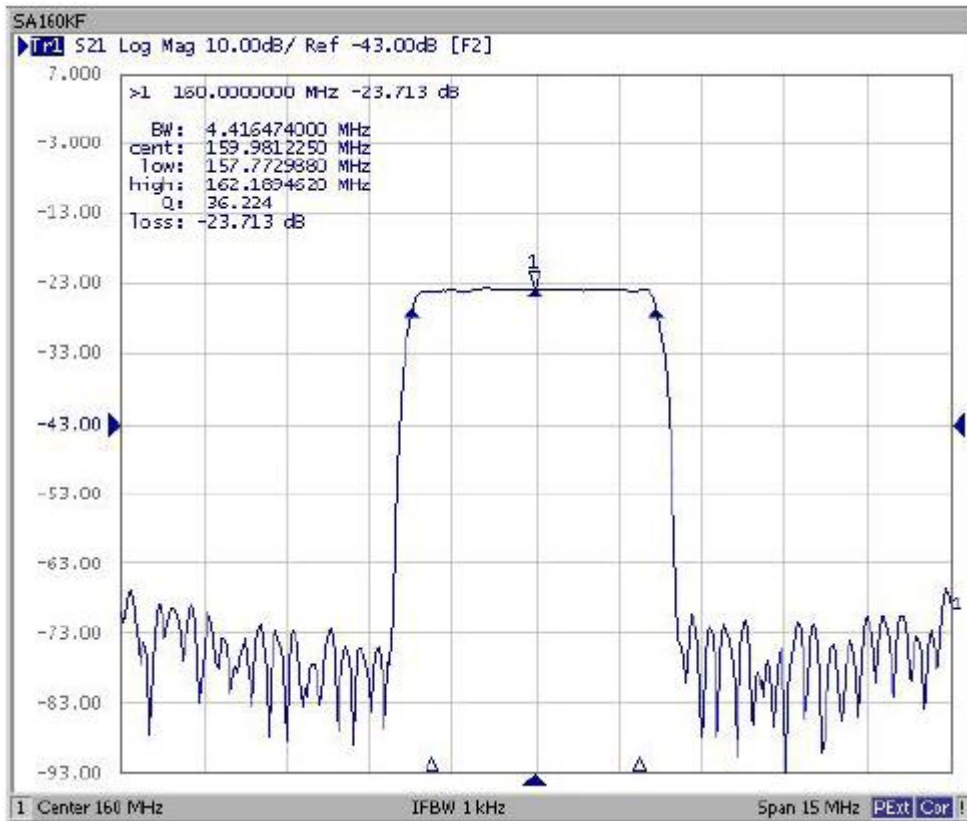
TEST ENVIRONMENT



Test Fixture & Values	
Input	L1=68nH , C1=30pF
Output	L2=56nH , C2=30pF

Source & Load Impedance: 50 ohm

FREQUENCY RESPONSE



Oscilent Corporation - CALL **949.252.0522**

Part No.: 835-IF160.0M-K

18195 East McDermott Street, Building D, Irvine, CA 92614, USA
 Fax: 949.252.0599, E-Mail: Sales@Oscilent.com