

T1/E1/CEPT/ISDN-PRI Interface Transformers

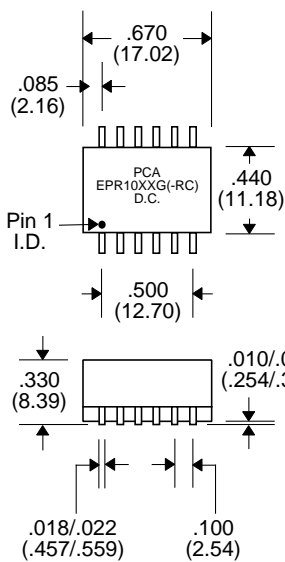
EPR1051G to EPR1062G EPR1051G-RC to EPR1062G-RC



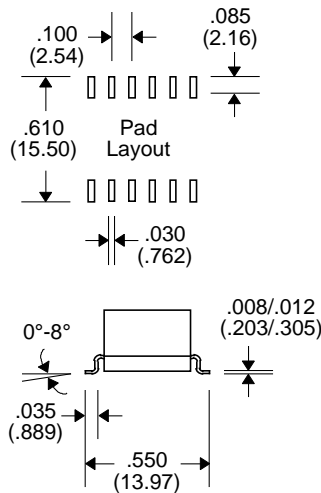
- Optimized for Leading Transceiver I.C.'s
- Meets or exceeds UL1459 & IEC950 Standards
- For Extended Temperature (-40°C to +85°C) add "E" to part number
- Add "-RC" after part number for RoHS Compliant
- 2000 Vrms Isolation

Electrical Parameters @ 25° C

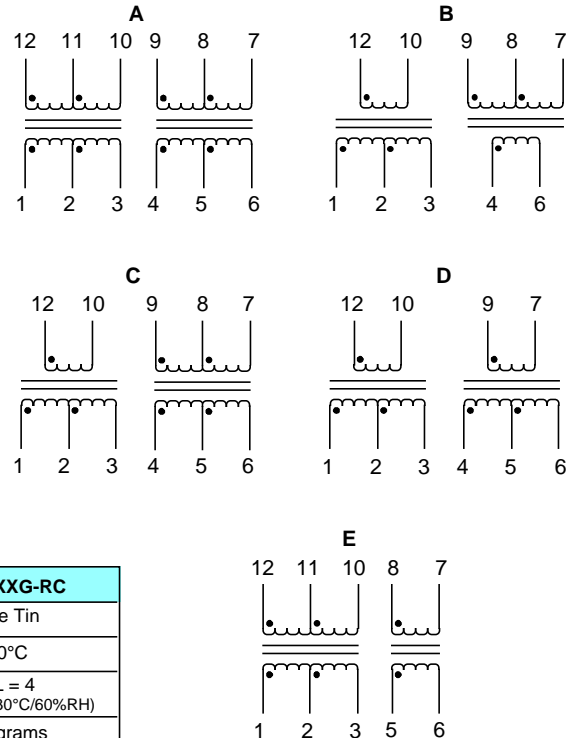
Part Number	Turns Ratio	OCL (mH Min.)	Cw/w (pF Max.)	LI (µH Max.)	Pri. DCR (Max.)	Sec. DCR (Max.)	Primary Pins	Schematic
EPR1051G(-RC)	1CT:2CT/1CT:2CT	1.2 / 1.2	50 / 50	0.8 / 0.8	1.0 / 1.0	1.7 / 1.7	12,10 / 4,6	A
EPR1052G(-RC)	1CT1CT/1CT:1CT	1.2 / 1.2	50 / 50	0.8 / 0.8	1.0 / 1.0	1.0 / 1.0	1,3 / 4,6	A
EPR1053G(-RC)	1CT:1.15CT/1CT:1.15CT	1.2 / 1.2	50 / 50	0.8 / 0.8	1.0 / 1.0	1.4 / 1.4	1,3 / 4,6	A
EPR1054G(-RC)	1CT:1CT/1CT:2CT	1.2 / 1.2	50 / 50	0.8 / 0.8	1.0 / 1.0	1.0 / 1.8	1,3 / 4,6	A
EPR1055G(-RC)	1CT:1.15CT/1CT:1CT	1.6 / 1.6	50 / 50	0.8 / 0.8	1.2 / 1.2	1.4 / 1.2	12,10 / 4,6	A
EPR1056G(-RC)	1CT:1.36CT/1CT:1.36CT	1.2 / 1.2	60 / 60	0.8 / 0.8	1.2 / 1.2	1.4 / 1.4	1,3 / 4,6	A
EPR1057G(-RC)	1CT:1.41CT/1CT:1.41CT	1.2 / 1.2	50 / 50	0.8 / 0.8	1.0 / 1.0	1.4 / 1.4	12,10 / 9,7	A
EPR1058G(-RC)	1:1/1.26/1:2CT	1.2 / 1.2	50 / 60	0.8 / 0.8	1.0 / 1.0	1.2 / 1.2	12,10 / 4,6	B
EPR1059G(-RC)	1:1.15CT/1CT:2CT	1.5 / 1.2	50 / 60	0.8 / 0.8	1.0 / 1.0	1.7 / 2.0	12,10 / 4,6	C
EPR1060G(-RC)	1:1/1.26/1:1/1.26	1.5 / 1.5	50 / 50	0.8 / 0.8	1.0 / 1.0	1.2 / 1.2	12,10 / 9,7	D
EPR1061G(-RC)	1CT:2CT/1:1	1.2 / 1.2	50 / 50	0.8 / 0.8	1.2 / 1.2	2.0 / 1.2	1,3 / 5,6	E
EPR1062G(-RC)	1CT:1/1:1.36CT	0.7 / 0.7	20 / 20	0.7 / 0.7	0.25 / 0.5	0.4 / 0.8	1,3 / 9,7	D



Package



Schematics



Notes :	EPR10XXG	EPR10XXG-RC
1. Lead Finish	SnPb	Matte Tin
2. Peak Temperature Rating	225°C	260°C
3. Moisture Sensitive Levels	MSL = 3 (168 Hours, 30°C/60%RH)	MSL = 4 (72 Hours, 30°C/60%RH)
4. Weight	TBD grams	TBD grams
5. Packaging Information (*Add "TR" to end of part number when placing order)	(Tube)	TBD pieces/tube
	(Tape & Reel)	TBD pieces/13" reel (*EPR10XXG-TR)

Unless Otherwise Specified Dimensions are in Inches /mm ± .010 / .25