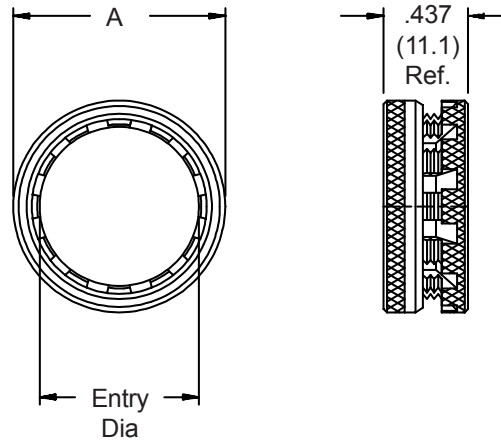


**MS27741-10**

Basic Part No. \_\_\_\_\_  
 Shell Size \_\_\_\_\_


**TABLE I**

Dash No.	A Dia Max	Entry Dia.	No. of Slots	Weight in Grams
2	.545 (13.8)	.250 (6.4)	3	2.268
3	.670 (17.0)	.375 (9.5)	4	2.722
4	.795 (20.2)	.500 (12.7)	6	3.175
5	.920 (23.4)	.625 (15.9)	8	4.082
6	1.045 (26.5)	.750 (19.1)	10	4.536
7	1.170 (29.7)	.875 (22.2)	10	4.990
8	1.295 (32.9)	1.000 (25.4)	12	5.443
9	1.420 (36.1)	1.125 (28.6)	15	6.350
10	1.687 (42.8)	1.250 (31.8)	15	10.433
11	1.812 (46.0)	1.375 (34.9)	15	14.515

1. For complete dimensions see applicable Military Specification.
2. Finish: Body and Nut - Gold Iridite; Spring - Gold Plate.
3. Metric dimensions (mm) are indicated in parentheses.