

CTSD20F Series

From 0.47 μ H to 1000 μ H

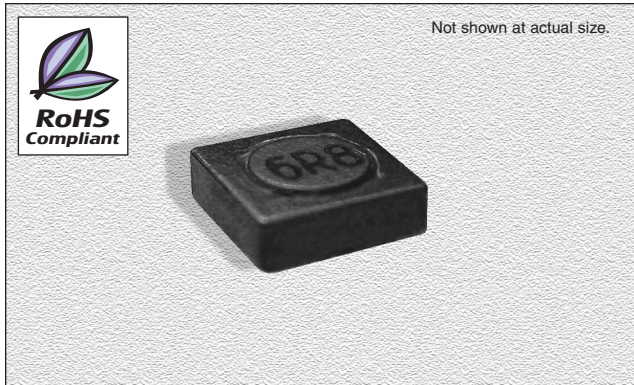
SPECIFICATIONS

Parts are available in $\pm 20\%$ tolerance only.

*I_{rms}: Average current for 40°C temp. rise from 25°C.

**I_{sat}: DC current at which the inductance drops 30% typ. from its value without current.

Part Number	Inductance (μ H $\pm 20\%$)	L Test Freq. (KHz)	DCR Max. (Ω)	*I _{rms} Max. (A)	**I _{sat} Max. (A)
CTSD20F-R47M	0.47	100	0.0250	3.59	4.00
CTSD20F-1R2M	1.20	100	0.0344	3.07	2.55
CTSD20F-1R5M	1.50	100	0.0390	2.88	2.15
CTSD20F-2R2M	2.20	100	0.0536	2.45	1.87
CTSD20F-3R3M	3.30	100	0.0684	2.17	1.47
CTSD20F-4R7M	4.70	100	0.0765	2.05	1.33
CTSD20F-6R2M	6.20	100	0.0900	1.89	1.12
CTSD20F-8R2M	8.20	100	0.1250	1.61	0.966
CTSD20F-100M	10.0	100	0.1375	1.53	0.903
CTSD20F-150M	15.0	100	0.2069	1.25	0.718
CTSD20F-220M	22.0	100	0.2566	1.12	0.596
CTSD20F-330M	33.0	100	0.3875	0.913	0.491
CTSD20F-470M	47.0	100	0.5814	0.745	0.406
CTSD20F-680M	68.0	100	0.8685	0.610	0.337
CTSD20F-820M	82.0	100	0.9731	0.576	0.308
CTSD20F-101M	100	100	1.3250	0.495	0.283
CTSD20F-151M	150	100	1.7125	0.435	0.228
CTSD20F-221M	220	100	2.5500	0.356	0.188
CTSD20F-331M	330	100	3.7375	0.294	0.155
CTSD20F-471M	470	100	4.6750	0.263	0.129
CTSD20F-681M	680	100	6.950	0.216	0.107
CTSD20F-821M	820	100	7.775	0.204	0.098
CTSD20F-102M	1000	100	10.913	0.172	0.088



CHARACTERISTICS

Description: SMD (shielded) power inductor

Applications: Digital cameras, CD players, cellular phones, PDAs, PCMCIA cards, GPS systems, etc.

Operating Temperature: -40°C to +85°C

Inductance Tolerance: $\pm 20\%$

Testing: Tested on a HP4285A at 100 KHz

Packaging: Tape & Reel

Marking: Parts are marked with inductance code

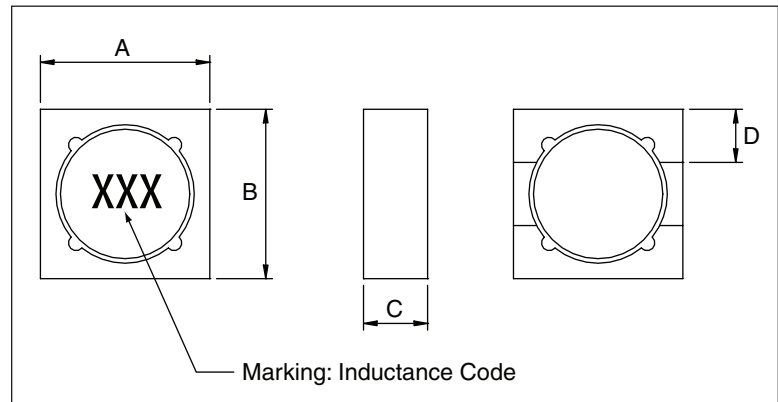
Miscellaneous: RoHS Compliant.

Additional Information: Additional electrical & physical information available upon request

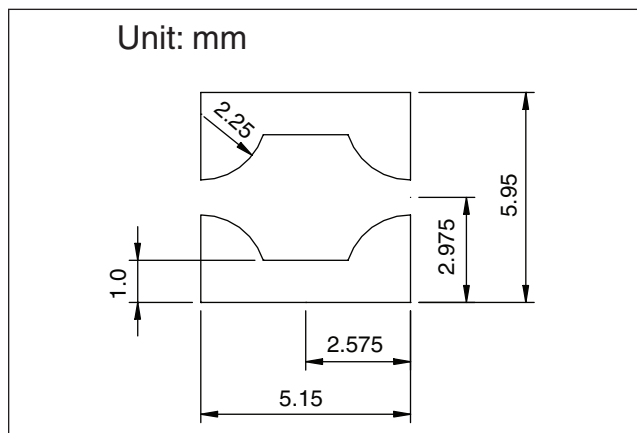
Samples available. See website for ordering information.

PHYSICAL DIMENSIONS

Size	A Max.	B Max.	C Max.	D Typ.
mm	5.2	5.2	2.0	1.5
inches	0.205	0.205	0.079	0.059



PAD LAYOUT



06.21.07