

# POWER LINE CHOKE

## (DRUM CORE STYLE)

Electrical Specifications at 25°C

Parameter	Min.	Typ.	Max.	Units
Inductance		300		μH
$I_{MAX}^1$			8.0	A
DCR		85		mΩ
Lead Diameter		.0359 (0.912)		inches (mm)

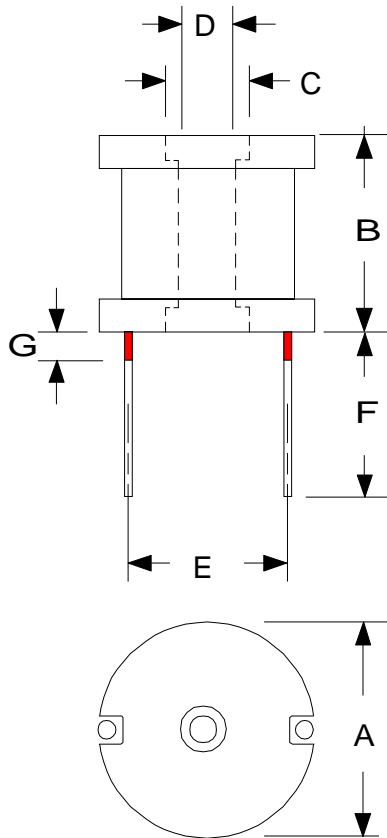
### Applications

Power Amplifiers  
 Filters Power Supplies  
 SCR and Triac Controls  
 Speaker Crossover Networks  
 RFI Suppression

#### Test Conditions:

Inductance tested at 100 mV<sub>RMS</sub> and 1 kHz

All dimensions in inches



Dim.	inches
A	0.949
B	0.795
C	0.187
D	0.126
E	0.750
G	0.062

High Saturation  
 Pre-Tinned Leads  
 Center hole for mechanical mounting

Leads are .0359 (#19 AWG)  
 Leads tinned to within 1/16" of body.

RHOMBUS P/N: <b>L-12478</b>	
CUST P/N:	NAME:
DATE: <b>04/28/00</b>	SHEET: 1 OF 1