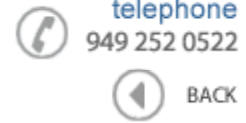




Data Sheet



Product Category: IF SAW Filter

Part Number	Package	Application	Last Modified
807-IF456.0M-A	7.0 x 5.0 SMD	Mobile Communication	Jan. 01, 2007

TYPE :
 456.0 MHz IF SAW Filter
 7.60 MHz Bandwidth



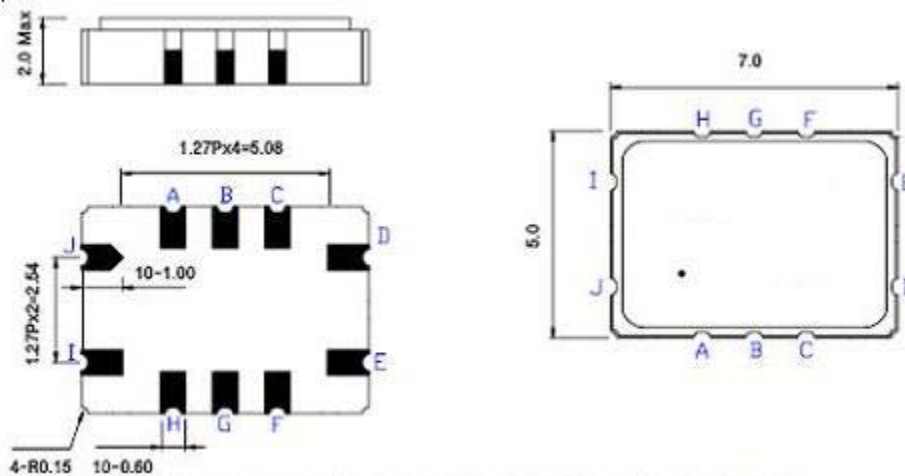
PART NUMBER :
807-IF456.0M-A

OPERATING CONDITIONS / ELECTRICAL CHARACTERISTICS

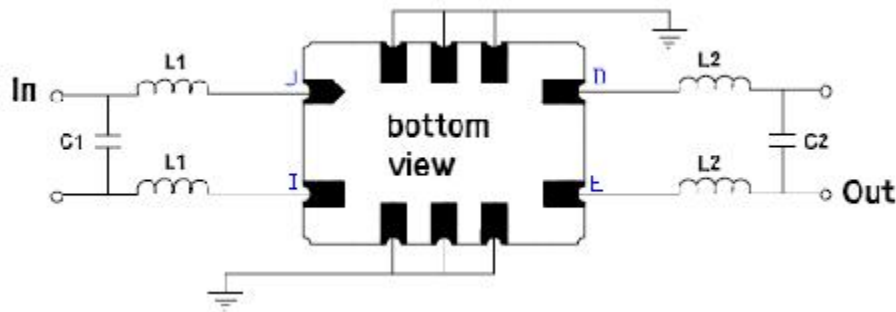
PARAMETERS	Minimum	Typical	Maximum	Units
Center Frequency	455.7	456.0	456.3	MHz
Insertion Loss at Fo	-	14.5	16.5	dB
Bandwidth at -3.0 dB	7.0	7.6	-	MHz
Bandwidth at -40.0 dB	-	12.6	14.0	MHz
Relative Attenuation	-			
Lower Sidelobe	40	45	-	dB
Upper Sidelobe	40	43	-	dB
Temperature Coefficient	-	0.03	-	ppm/°C
Source Impedance (Balanced)*	-	200	-	ohm
Load Impedance (Balanced)*	-	200	-	ohm
Amplitude Ripple	-	1.0	1.5	dBp-p
Group Delay Variation	-	120	200	ns
Operating Temperature	-40	-	+85	°C
Absolute Delay at Fo	-	0.520	1.0	µsec

* With Matching Network (Ref. Testing Environment Circuit as shown) Modification to Impedance Values are possible if needed.

PACKAGE OUTLINE (mm)



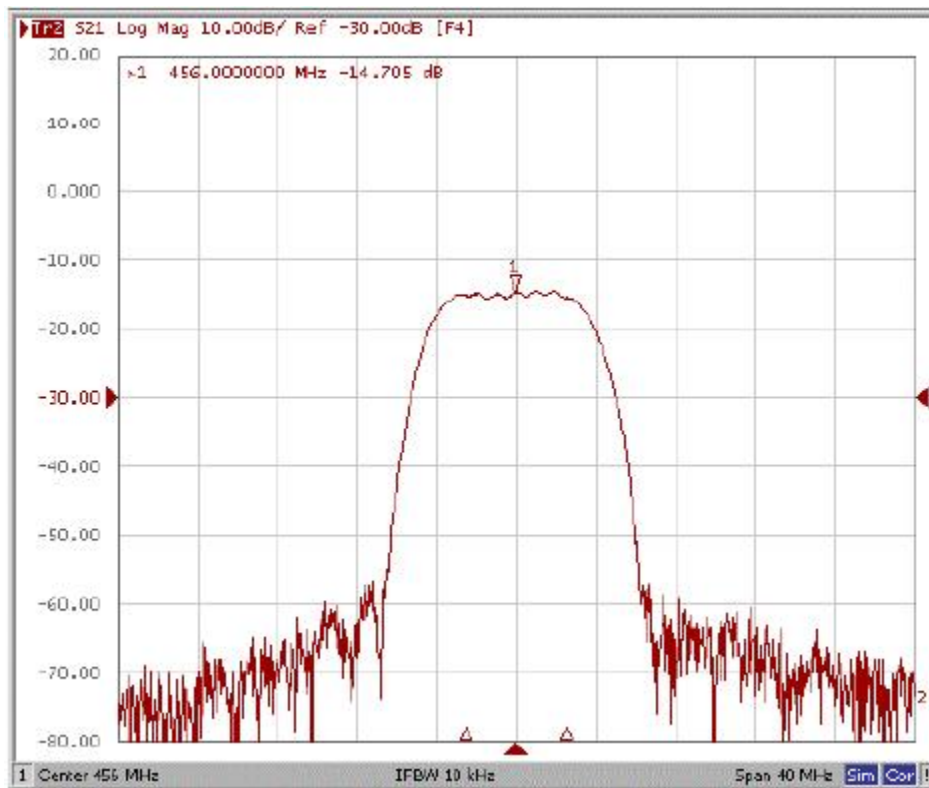
PIN Descriptions: IN – I,J, OUT – E,D GROUND – A,B,C,F,G,H

TEST CIRCUIT

TEST FIXTURE AND VALUES/SOURCE AND LOAD IMPEDANCE 50 ohm

INPUT: L1: 30 nH; C1: 7pF

OUTPUT: L2: 24 nH; C2: 9pF

FREQUENCY RESPONSE

Oscilent Corporation - CALL **949.252.0522**

18195 East McDermott Street, Building D, Irvine, CA 92614, USA

Fax: 949.252.0599, E-Mail: Sales@Oscilent.com

Part No.: 807-IF456.0M-A