

P-tec Corp. Tel:(800)688-0613  
 2405 Commerce Circle Tel:(719) 589 3122  
 Alamosa Co. 81101 Fax:(719) 589 3592  
 www.p-tec.net sales@p-tec.net



## PL00600 SMD LED 0911 Package

### Features

- \*Flat Lens Package 3.0 x 2.4 x 1.1mm
- \*Same Footprint as SOT23 Package
- \*AlGaInP Ultra Bright Orange-Red Chip used
- \*High Light Output
- \*Compatible with IR Solder-Process
- \*2000 or 1000 pcs per Reel
- \*RoHS Compliant

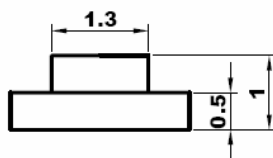
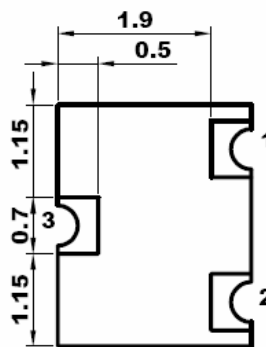
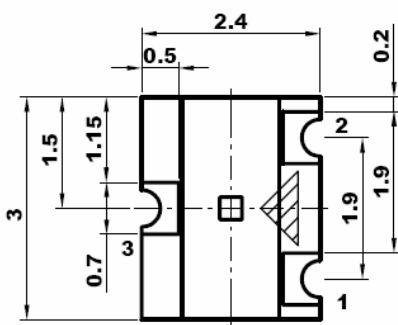
### Absolute Maximum Ratings at $T_A = 25^\circ\text{C}$

Power Dissipation.....	78mA
Reverse Voltage (<100 $\mu\text{A}$ ).....	5.0V
Max Forward Current.....	50mA
Peak Forward Current (1/10 Duty Cycle, 0.1ms Pulse Width).....	100mA
Operating Temperature Range.....	-40°C to + 85°C
Storage Temperature Range.....	-40°C to + 85°C
Soldering Temperature (1.6mm below body).....	260°C for 10 seconds

### Electrical & Optical Characteristics at $T_A = 25^\circ\text{C}$

Part Number	Emitting Color	Chip Material	Dominant Wave Length	Peak Wave Length	Viewing Angle $2\theta_{1/2}$	Forward Voltage @20mA (V)		Luminous Intensity @20mA (mcd)	
						Typ	Max	Min	Typ
Water Clear Lens			nm	nm	Deg				
PL00600-WCR08	Orange-Red	AlGaInP	620	630	120°	2.0	2.6	35.0	70.0

All dimensions are in **Millimeters**. Tolerance is  $\pm 0.15\text{mm}$  unless otherwise specified.



### Recommended Soldering Pad Layout

