



10 OPzS 1000(2V1000AH)



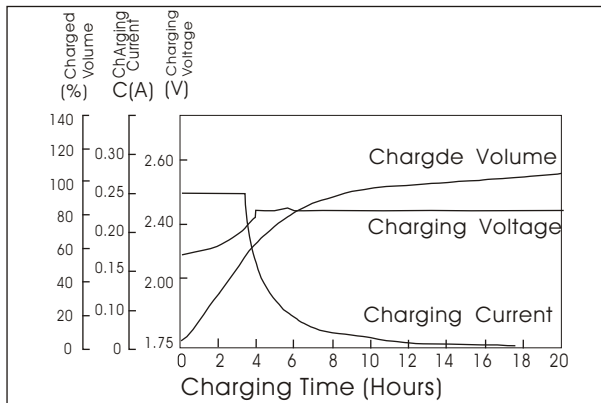
● Specifications

Nominal Voltage		2 V
Rated capacity (10 hour rate)		1000Ah
Dimensions	Total Height	722mm(28.4 Inches)
	Height	646mm (25.4inches)
	Length	233mm(9.2inches)
	Width	210 mm (8.27inches)
Weight Approx (dry weight)		54Kg (119.0lbs)

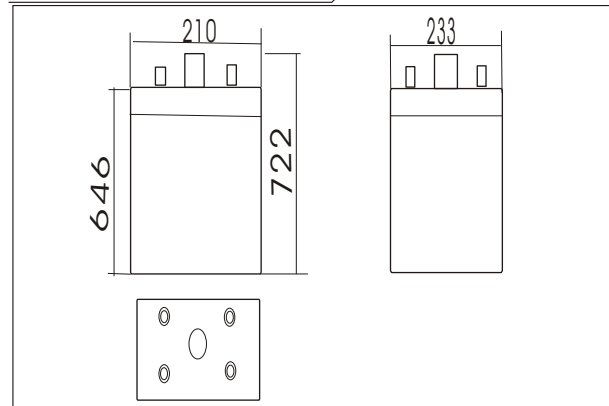
● Characteristics

Capacity 25°C(77°F)	10 hour rate(100A)	1000AH
	1 hour rate(450A)	450AH
	0.5 hour rate(700A)	350AH
Capacity affected by Temperature (10hour rate)	40°C(104°F)	102%
	25°C(77°F)	100%
	0°C(32°F)	85%
	-15°C(5°F)	65%
Self-Discharge at 25°C(77°F)	Capacity after 3 month storage	91%
	Capacity after 6 month storage	82%
	Capacity after 12 month storage	64%
Terminal quantity	4	
Charge (constant Voltage)	Initial Charging Current less than 250A Voltage 2.33-2.38V	

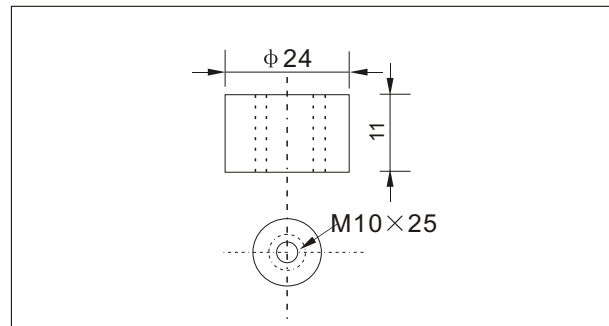
● Charging characteristics(25°C)



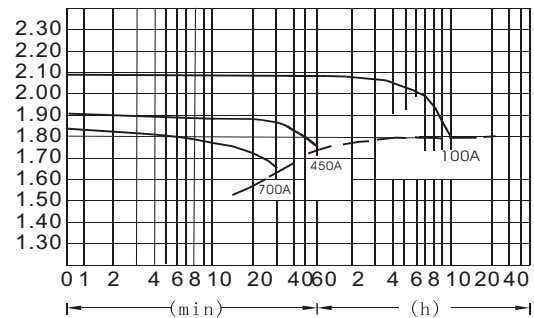
● Outer dimensions (mm)



● Terminal Type (mm)



● Discharge Curves 25°C(77°F)



● Cycling Curves

