

40 PIN SMD ETHERNET 10/100 BASE QUAD PORT TRANSFORMER

PN:40ST1011L DATA SHEET

A. GENERAL SPECIFICATIONS

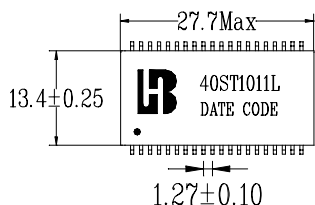
1. IEEE 802.3 ETHERNET COMPATIBLE, 100 BASE-TX
2. SURFACE MOUNTABLE
3. DESIGN FOR MULTIPORT REPEATER AND ETHERNET SWITCHING HUB APPLICATION
4. CUSTOMER DESIGNS AVAILABLE FOR SPECIFIC APPLICATION
5. OPERATING TEMP RANGE: 0°C TO 100°C.

B. ELECTRICAL SPECIFICATIONS@25°C

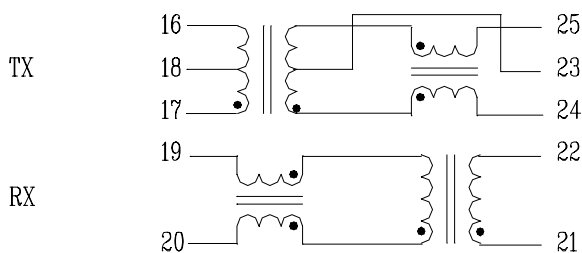
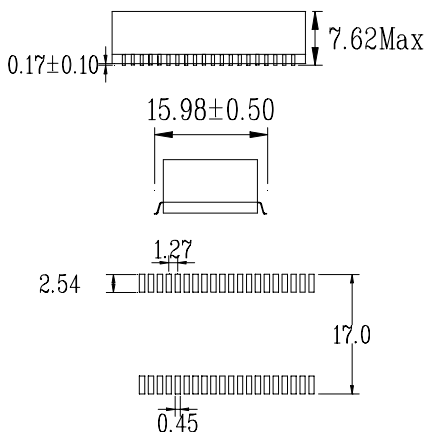
1. ISOLATION HI-POT: 1500 VRMS (PRI./SEC.)
2. TURN RATIO (+/- 5%): TX=1CT: 1.25CT, RX=1:1
3. RISE TIME: 2.5 ns TYP
4. CW/W: 28 pF TYP
5. LEAKAGE INDUCTANCE: 0.4uH Max
6. CMRR (0.1-100 MHz): -37dB MIN
7. RETURN LOSS (MIN):

5-30 MHz	30-60 MHz	60-80 MHz
-16dB	-12dB	-10 dB
8. CROSSTALKS (0.1 TO 100MHz): -38dB Min
9. OCL (uH,Min): 350 uH, at 8mA DC FORM 0-7°C
10. DCR: 0.9 Max
11. INSERTION LOSS (1MHz-100MHz) : -1.15dB Max

C. SCHEMATIC & DIMENSIONS & MARKING (UNIT mm):



PIN 1-15 NO CIRCUIT
PIN 26-40 NO CIRCUIT



Suggest pad layout
TOLERANCE: ±0.25