

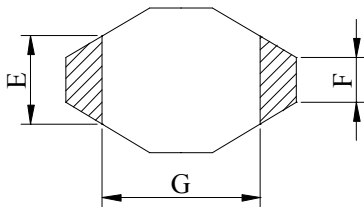
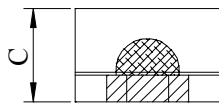
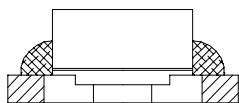
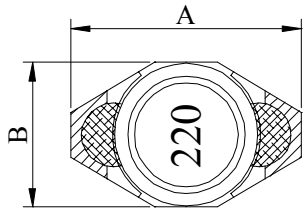
SPECIFICATION FOR APPROVAL

REF : 20080303-A

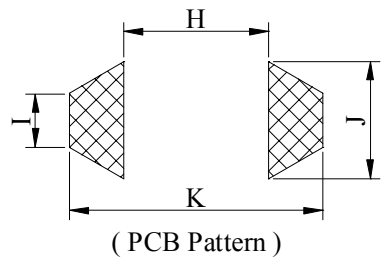
PAGE: 1

PROD. NAME	SHIELDED SMD POWER INDUCTOR	ABC'S DWG NO.	SS1608□□□□L□-□□□
		ABC'S ITEM NO.	

. CONFIGURATION & DIMENSIONS :



- A : 6.50±0.2 m/m
- B : 4.40 max. m/m
- C : 2.90±0.15 m/m
- E : 2.50 ref. m/m
- F : 1.24 ref. m/m
- G : 4.45 ref. m/m
- H : 4.10 ref. m/m
- I : 1.60 ref. m/m
- J : 3.00 ref. m/m
- K : 7.00 ref. m/m

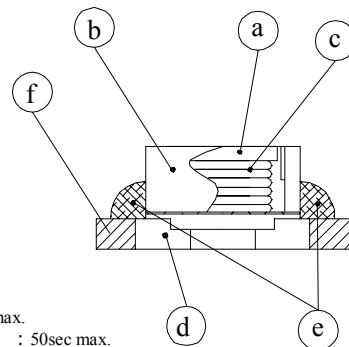


. SCHEMATIC DIAGRAM :

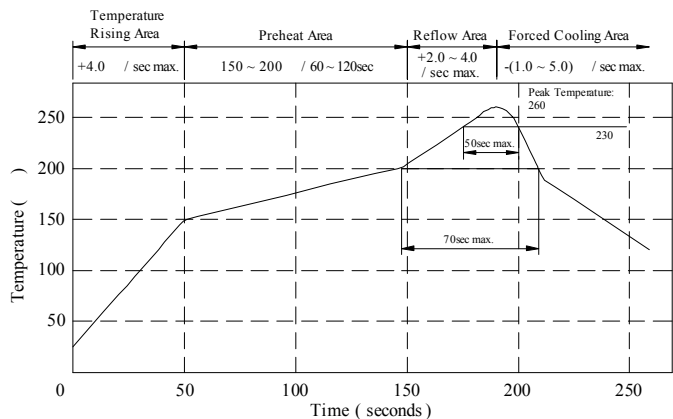


. MATERIALS :

- a . Core : Ferrite DR core
- b . Core : Ferrite RI core
- c . Wire : Enamelled copper wire (class F)
- d . Base : Ceramic
- e . Adhesive : Epoxy resin
- f . Terminal : MoMn/Ni/Au
- g . Remark : Products comply with RoHS' requirements



Peak Temp : 260 max.
 Max time above 230 : 50sec max.
 Max time above 200 : 70sec max.



. GENERAL SPECIFICATION :

- a . Temp. rise : 30 max.
- c . Storage temp. : -55 ----+125
- d . Operating temp. : -55 ----+125
- e . Resistance to solder heat : 260 .10 secs.

AR-001A

SPECIFICATION FOR APPROVAL

REF : 20080303-A

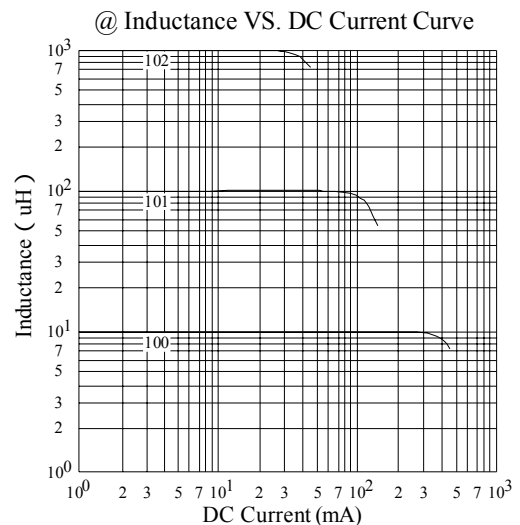
PAGE: 2

PROD. NAME	SHIELDED SMD POWER INDUCTOR	ABC'S DWG NO.	SS1608□□□□L□-□□□
		ABC'S ITEM NO.	

. ELECTRICAL CHARACTERISTICS :

DWG No.	Inductance (μ H) $\pm 20\%$	Q min.	Test Freq. (Hz)		SRF (MHz) nom.	RDC (Ω) max.	Irms (A) max.	Isat (A) typ.
			L/0.1V	Q				
SS16081R0ML□-□□□	1.0	10	100K	500K	250	0.040	3.000	1.200
SS16081R5ML□-□□□	1.5	20	100K	500K	125	0.045	2.800	0.920
SS16082R2ML□-□□□	2.2	25	100K	500K	120	0.050	1.800	0.800
SS16083R3ML□-□□□	3.3	40	100K	200K	120	0.055	1.600	0.620
SS16084R7ML□-□□□	4.7	40	100K	200K	105	0.060	1.400	0.500
SS16086R8ML□-□□□	6.8	40	100K	200K	50	0.065	1.200	0.400
SS1608100ML□-□□□	10.0	40	100K	200K	38	0.075	1.000	0.320
SS1608150ML□-□□□	15.0	40	100K	100K	33	0.090	0.800	0.260
SS1608220ML□-□□□	22.0	40	100K	100K	25	0.110	0.700	0.240
SS1608330ML□-□□□	33.0	40	100K	100K	20	0.190	0.600	0.160
SS1608470ML□-□□□	47.0	40	100K	100K	20	0.230	0.500	0.140
SS1608680ML□-□□□	68.0	40	100K	100K	15	0.290	0.400	0.120
SS1608101ML□-□□□	100.0	40	100K	100K	10	0.480	0.300	0.100
SS1608151ML□-□□□	150.0	40	100K	100K	9	0.590	0.260	0.080
SS1608221ML□-□□□	220.0	40	100K	100K	6	0.770	0.220	0.070
SS1608331ML□-□□□	330.0	40	100K	100K	5	1.400	0.200	0.050
SS1608471ML□-□□□	470.0	40	100K	100K	4	1.800	0.190	0.045
SS1608681ML□-□□□	680.0	40	100K	100K	3	2.200	0.180	0.040
SS1608102ML□-□□□	1000.0	40	100K	100K	2	3.400	0.150	0.028
SS1608152ML□-□□□	1500.0	50	100K	100K	2	4.200	0.120	0.024
SS1608222ML□-□□□	2200.0	50	100K	100K	2	8.500	0.100	0.020
SS1608332ML□-□□□	3300.0	50	100K	100K	1	11.000	0.080	0.018
SS1608472ML□-□□□	4700.0	50	100K	100K	1	13.900	0.060	0.014
SS1608682ML□-□□□	6800.0	50	100K	100K	1	25.000	0.040	0.012
SS1608103ML□-□□□	10000.0	50	100K	100K	0.8	32.800	0.020	0.010

- 1). □ : Packaging information... A Bulk B Taping Reel
- 2). "- □□□ " : Reference code
- 3). Inductance Tested at 0.1V/100KHz
- 4). Irms base on temp.rise 30 max.
- 5). Isat base on L/L0A=10% typ.



AR-001A



SPECIFICATION FOR APPROVAL

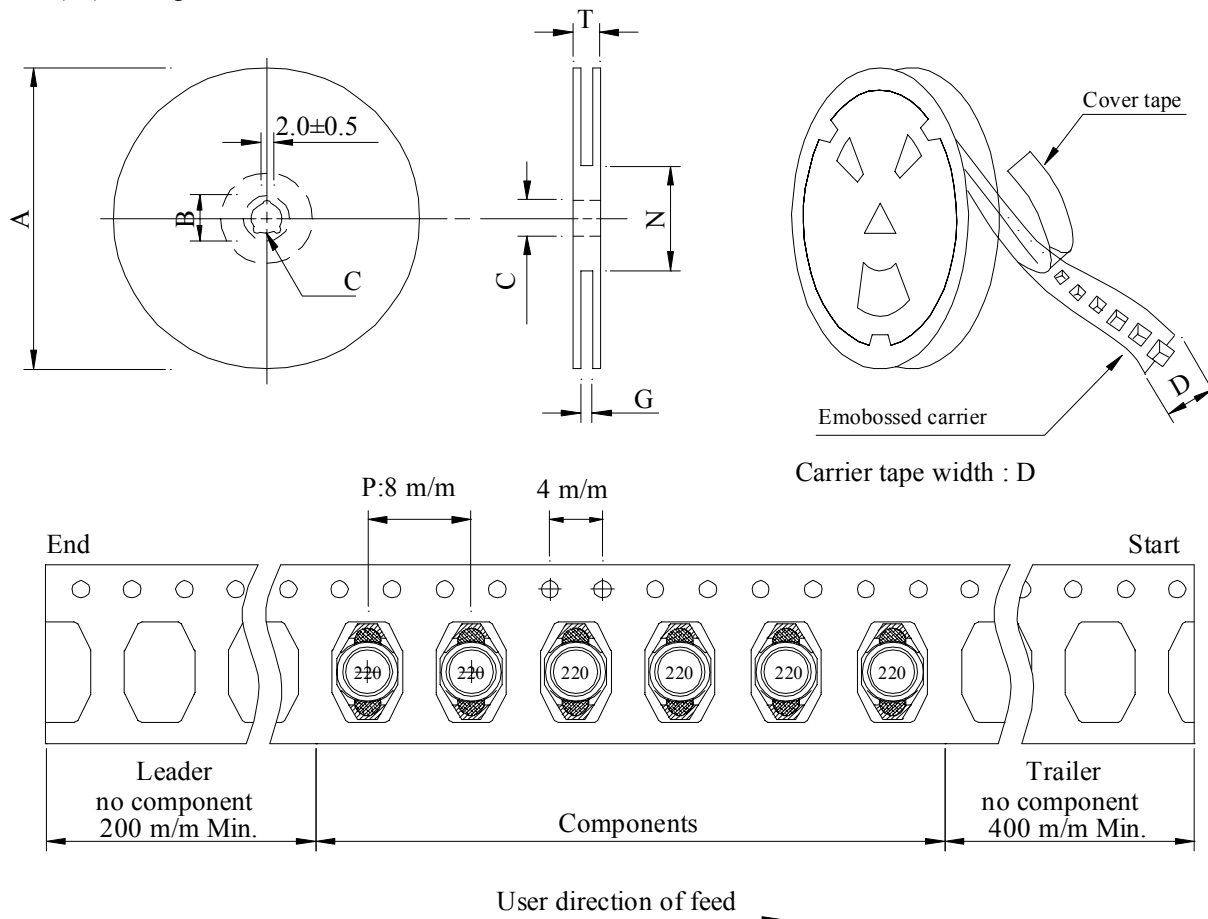
REF : 20080303-A

PAGE: 3

PROD. NAME	SHIELDED SMD POWER INDUCTOR	ABC'S DWG NO.	SS1608□□□□L□-□□□
		ABC'S ITEM NO.	

PACKAGING INFORMATION :

(1) Configuration



(2) Dimensions

Unit:m/m

Style	A	B	C	D	G	N	T
07-12	178	21±0.8	13	12	14 ⁺⁰	50 ⁻⁰	16.5
13-12	330	21±0.8	13±0.5	12	14 ⁺⁰	50 ⁻⁰	18.4

(3) Q'TY & G.W. Per package

Series	Inner : Reel			Outer : Carton		
	Q'TY (pcs)	G.W. (gw)	Style	Q'TY (pcs)	G.W. (Kg)	Size (cm)
SS1608	600	250	07-12	24,000	10.5	42 x 41 x 24
SS1608	2500	1050	13-12	20,000	8.5	40 x 40 x 24

AR-001A

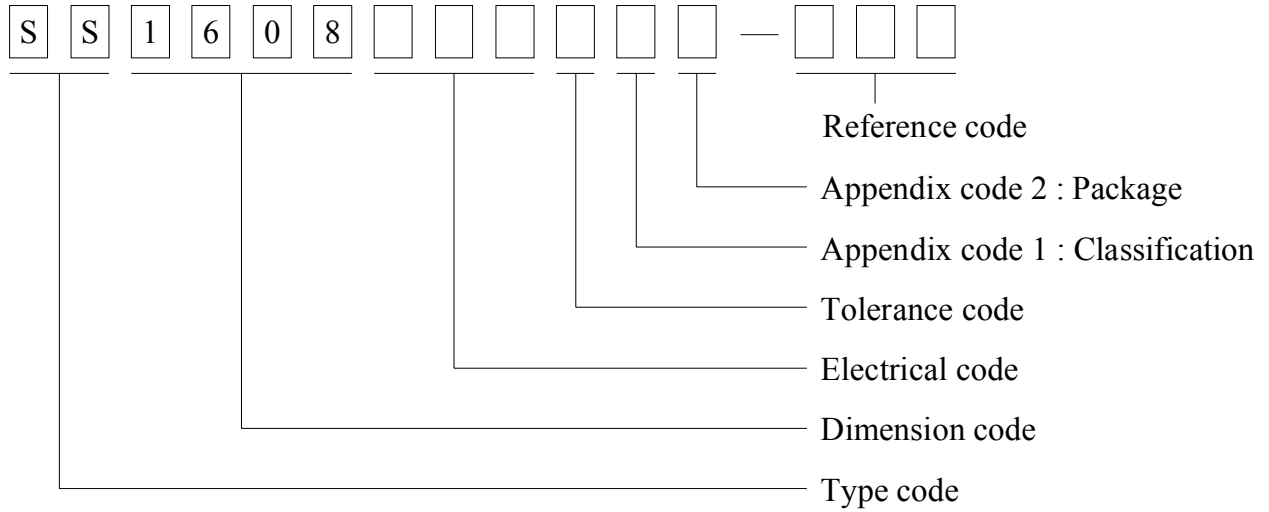
SPECIFICATION FOR APPROVAL

REF : 20080303-A

PAGE: 4

PROD. NAME	SHIELDED SMD POWER INDUCTOR	ABC'S DWG NO. ABC'S ITEM NO.	SS1608□□□□L□-□□□
---------------	--------------------------------	---------------------------------	------------------

. DWGING NUMBER EXPRESSION :



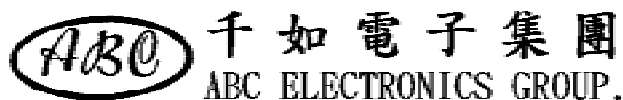
Appendix code 1 : Product Classification

- L : Lead Free Standard products comply with RoHS' requirements
- 1 ~ 9 : Lead Free Special products comply with RoHS' requirements

Appendix code 2 : Package Information

Code	Inner package	Inner package Q'TY	Remark
A	T.B.D.	T.B.D.	
B	T /R (Reel package)	600 pcs	
C	T /R (Reel package)	2500 pcs	
D	T /R (Reel package)	600 pcs	heat-activated cover tade

AR-001A



SPECIFICATION FOR APPROVAL

REF : 20080303-A

PAGE: 5

PROD.	SHIELDED SMD	ABC'S DWG NO.	SS1608□□□□L□-□□□
NAME	POWER INDUCTOR	ABC'S ITEM NO.	

. RELIABILITY TEST :

Test item	Specification	Test condition						
Solderability	More than 95% of the terminal electrode shall be covered with fresh solder.	Preheat : 155 / 4 hours. Solder : Sn96.5 / Ag3 / Cu0.5 or equivalent Solder temp. : 235±5 Flux : Rosin Dip time : 5±0.5 seconds						
Thermal shock test (Temp. cycle)	Electrical oharacteristics shall not change more than ±20%	<table style="width: 100%; border: none;"> <tr> <td style="text-align: center;">Room temp. 15 minutes</td> <td style="text-align: center;">→</td> <td style="text-align: center;">-55 30 minutes</td> </tr> <tr> <td style="text-align: center;">Room temp. 15 minutes</td> <td style="text-align: center;">→</td> <td style="text-align: center;">+125 30 minutes</td> </tr> </table> <p>Total : 50 cycles</p>	Room temp. 15 minutes	→	-55 30 minutes	Room temp. 15 minutes	→	+125 30 minutes
Room temp. 15 minutes	→	-55 30 minutes						
Room temp. 15 minutes	→	+125 30 minutes						
Humidity Test		Temperature : 40±2 Humidity : 90±5% Time : 1000 hours						
High temp. Resistance test		Temperature : 125±5 Applied current : Per spec. Time : 96 hours						

AR-001A



SPECIFICATION FOR APPROVAL

REF : 20080303-A

PAGE: 6

PROD. NAME	SHIELDED SMD POWER INDUCTOR	ABC'S DWG NO.	SS1608□□□□L□-□□□
		ABC'S ITEM NO.	

UL CARD :

OBMW2 September 8, 2000

Magnet Wire-Component

JUNG SHING WIRE CO LTD E174837

231 CHUNG CHENG RD, SEC 3 JEN-TEH HSIANG, TAINAN
HSIEN TAIWAN

Mtl Dsg	Mark Dsg	BC	Coat Typ	OC	ANSI Type	Temp Class
AIW	—	Polyamideimide	—	—	MW81-C	220
CFUEWB	—	Polyurethane	—	—	MW75C	130
EIAIW	—	Polyesterimide	Polyamideimide	—	MW35C	200
EILOCKY	—	Polyesterimide	Polyamide	—	—	180
EILOCKW	—	Polyesterimide	Modified Epoxy	—	—	200
EIW	—	Polyesterimide	—	—	—	220
EIW-2	—	Polyesterimide	—	—	MW74-C	200
FL.EILOCKY	—	Modified Polyester	Polyamide	—	—	155
LSFFW	—	Polyurethane	—	—	MW79-C	155
LSUEW	—	Polyurethane	—	—	—	130
PEW	—	Polyester	—	—	—	155
PEY	—	Polyester	Nylon	—	MW24-C	155
SF.FLW	—	Modified Polyester	—	—	MW26C	155
SF.EIW	—	Polyesterimide	—	—	MW77C	180
SF.BY@	—	Modified Polyester	Nylon	—	MW27-C	155
SF.FLY@	—	Modified Polyester	Nylon	—	MW27-C	155
SF.BLOCKBS	—	Modified Polyester	Modified Polyamide	—	—	155
SF.EILOCKY#	—	Polyesterimide	Polyamide	—	—	180
SF.EILOCKBS	—	Polyesterimide	Modified Polyamide	—	—	180
SF.BW@	—	Modified Polyester	—	—	MW26C	155
SFFW	—	Polyurethane	—	—	MW79	155

287806002 Page 1 of 2

A not-for-profit organization dedicated to public safety and committed to quality service

Mtl Dsg	Mark Dsg	BC	Coat Typ	OC	ANSI Type	Temp Class
SFFY	—	Polyurethane	Polyamide	—	MW80C	155
UEW-1	—	Polyurethane	—	—	MW2-C	105
UEW-2	—	Polyurethane	—	—	—	130
UEW-4	—	Polyurethane	—	—	MW75C	130
UEY	—	Polyurethane	Nylon	—	MW28-C	130
UEY-2	—	Polyurethane	Polyamide	—	MW28-C	130

@-May be suffixed by LZ; # - May be suffixed by LZ, EL or LZL.
LZ - Signifies magned wires twisted together; EL - signifies base coated magnet wire laid parallel with top coat applied overall; LZL - signifies base coated magnet wire twisted together and covered with top coat overall.

Marking: Company name or trademarks JSW or 榮星電線, material designation or marked designation on packaed or reel, and Recognized Component Mark.

See General Information Preceding These Recognitions
For use only in equipment where the acceptability of the combination is determined by Underwriters Laboratories Inc.

287806002 Page 2 of 2

OBMW2E174837
September 8, 2000