

PCM-3610

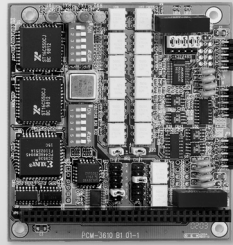
PCM-3612

PCM-3614

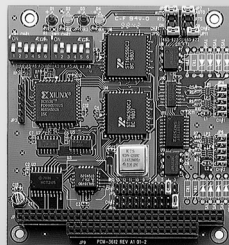
2-port RS-232/422/485 PC/104 Module with Isolation Protection

2-port RS-422/485 PC/104 Module

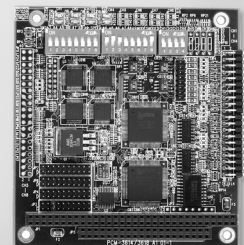
4-port RS-422/485 High-speed PC/104 Module



PCM-3610



PCM-3612



PCM-3614



Features

- High speed transmission rate
- Automatic RS-485 data flow control
- Jumper selectable interrupt level
- Supports Windows® 98/2000/XP
- Supports WinCE 3.0, 4.2, 5.0
- Powerful and easy-to-use utility (ICOM Tools)

Specifications

General

- **Card Interface** PC/104
- **Certifications** CE
- **Connectors** 2 x DB9-M
- **Ports** 2
- **Power Consumption** +5 V @ 400 mA typical
±12 V @ 950 mA max

Communications

- **Channel 1** RS-232, 422, or 485
- **Channel 2** RS-422, or RS-485
- **Character Length** 5, 6, 7, or 8 bits
- **IRQ** 3, 4, 5, 6, 7, 9
- **Parity** Even, odd, or none
- **Speed** 50 bps ~ 115.2 kbps
- **Stop Bit** 1, 1.5, or 2

Protection

- **Isolation Protection** 1,000 V_{DC}

Environment

- **Humidity (Operating)** 0 ~ 90 % RH
- **Operating Temperature** 0 ~ 65° C (32 ~ 149° F)
- **Storage Temperature** -40 ~ 85° C (-40 ~ 185° F)

Ordering Information

- **PCM-3610-B** Isolated RS-232/422/485 Module

Features

- Long distance communication
- Automatic RS-485 data flow control
- Jumper selectable interrupt level
- Supports Windows® 98/2000/XP
- Supports WinCE 3.0, 4.2, 5.0
- Powerful and easy-to-use utility (ICOM Tools)

Specifications

General

- **Card Interface** PC/104
- **Certifications** CE
- **Connectors** 2 x DB9-M
- **Indicators** Red LED for TX
Green LED for RX
- **Ports** 2
- **Power Consumption** +5 V @ 400 mA typical

Communications

- **Channel 1 and 2** RS-422, or RS-485
- **Character Length** 5,6,7, or 8 bits
- **IRQ** 3, 4, 5, 6, 7, 9, 10, 11, 12 or 15
- **Parity** Even, odd, or none
- **Speed** 50 bps ~ 115.2 kbps
- **Stop Bit** 1, 1.5, or 2

Environment

- **Humidity (Operating)** 0 ~ 90 % RH
- **Operating Temperature** 0 ~ 65° C (32 ~ 149° F)
- **Storage Temperature** -40 ~ 85° C (-40 ~ 185° F)

Ordering Information

- **PCM-3612-A** Dual Port RS-422/485 Module

Features

- Automatic RS-485 data flow control
- Shared IRQ settings for each ports
- LED indicators: TX, RX
- Standard PC ports: COM1, COM2, COM3, COM4 compatible
- Supports Windows® 98/2000/XP
- Supports WinCE 4.2, 5.0
- Powerful and easy-to-use utility (ICOM Tools)

Specifications

General

- **Card Interface** PC/104
- **Certifications** CE
- **Connectors** 4 x DB9-M
- **Ports** 4
- **Power Consumption** +5 V @ 450 mA

Communications

- **Data Bits** 5, 6, 7, 8
- **I/O Address Range** 0 x 000 ~ 0 x 3F8
- **IRQ** 3, 4, 5, 6, 7, 9, 10, 11, 12, or 15
- **Parity** Even, odd, or none
- **Data Signals** RS-422: TxD+, TxD-, RxD+, RxD-, CTS+, CTS-, RTS+ and RTS-
RS-485: DATA+, DATA-, CTS+, CTS-
- **Speed** 50 bps ~ 921.6 kbps
- **Stop Bits** 1, 1.5, 2

Protection

- **EFT Protection** 1000 V_{DC}
- **Termination Resistor** 120 W

Environment

- **Humidity (Operating)** 0 ~ 90 % RH
- **Operating Temperature** 0 ~ 65° C (32 ~ 149° F)
- **Storage Temperature** -40 ~ 85° C (-40 ~ 185° F)

Ordering Information

- **PCM-3614-A** 4-port RS-422/485 High-speed Module