

AZ DISPLAYS, INC.
COMPLETE LCD SOLUTIONS

**SPECIFICATIONS FOR
15.0" OPEN FRAME MONITOR**

PART NUMBER:
DATE:

AOM150X03 SERIES
SEPT 04, 2008

1. Introduction:

1.1 About the Product

AOM150X~~xx~~ 15.0" Open Frame Monitor series are rugged, high performance Industrial LCD Monitors, designed for commercial and industrial applications, such as kiosks, arcade games, ATM Machines aviation simulators, military, medical, marine, security, industrial equipment, and instrumentation equipment. This product can provide high brightness and contrast to achieve better viewing effect.

1.2 Features

15.0 inch XGA Active Matrix Color TFT LCD Monitor

High Contrast 500:1 Typical

Recommend resolution:1024x768(XGA)

OSD controls: Allow on-screen adjustments of Brightness, Contrast, RGB Auto Color Balance, H-Position, V-position

Multi system Video Input and auto detection video system.

Quick and easy integrations for Client solutions

Universal AC Power input

PMMA (Poly Methyl Methacrylate) protection (option)

2. Contents

Contents Index	Page
1. Introduction.....	1
1.1 About the product	1
1.2 Features	1
2. Contents.....	2
3. Specifications.....	3
4. Ordering Information.....	4
5. VGA Input Format.....	5
6. Mechanical Drawing.....	6-11
6.1 AOM150X03-000R	6
6.2 AOM150X5U-000R	7
6.3 AOM150X5R-000R	8
6.4 AOM150X03-010R	9
6.5 AOM150X5U-010R	10
6.6 AOM150X5R-010R	11
7. Packing List.....	12
8. Installing the Monitor.....	13
8.1 Power Cable Connection	13
8.2 VGA Signal Cable Connection	13
8.3 Video / S-Video Cable Connection	13
8.4 Switch On The Power	13
9. OSD Control.....	14-16
9.1 Menu Operation	14-15
9.2 Operations	16
10. Trouble Shooting.....	17

3. Specifications

Parameter	Specifications	Unit	Remark
Model Name	AOM150X xx		
Screen Size	15.0" (diagonal)	inch	
Display Format	1024 x (R.G.B) x 768	dot	
TFT-LCD Active Area	304.128 (H) x 228.096 (V)	mm	
Pixel Pitch	0.297 (H) x 0.297 (V)	mm	
Contrast Ratio	500:1(Typ.)		
Brightness	250(Typ.)	Cd/m ²	
Viewing Angle	-65~65(H); -55~65(V)(Typ.)	deg	
Outline Dimension	369.60(W) x 291.60(H) x 42.80(D)	mm	
	Video and S-video /		
Input/Output Interface	D-Sub 15 pin female for VGA / USB or RS-232 (DB9 Female) for Touch Screen Driver (Option)		
Power Source	100-240V _{AC} 50-60Hz, Universal / +12V _{DC} @ 3A		
Power Consumption	< 22W		
Touch Screen Controller	5 wire Resistive Driver USB/ RS232 (Option)		
Operating Temperature	0~50	.	
Storage Temperature	-20~60	.	
Lamp Life Time	30000	Hr	8.0mA
Weight	3.22	Kg	

4. Ordering Information

Parameter	AOM150X03-000R		AOM150X5U-000R	AOM150X5R-000R
CVBS	1	1		1
S-Video	1	1		1
VGA	XGA (1024x768)		XGA (1024x768)	XGA (1024x768)
Touch Panel Type	-	5W	Resistive	5W Resistive
Touch Screen Interface	-	USB		RS232
PMMA	©		-	-

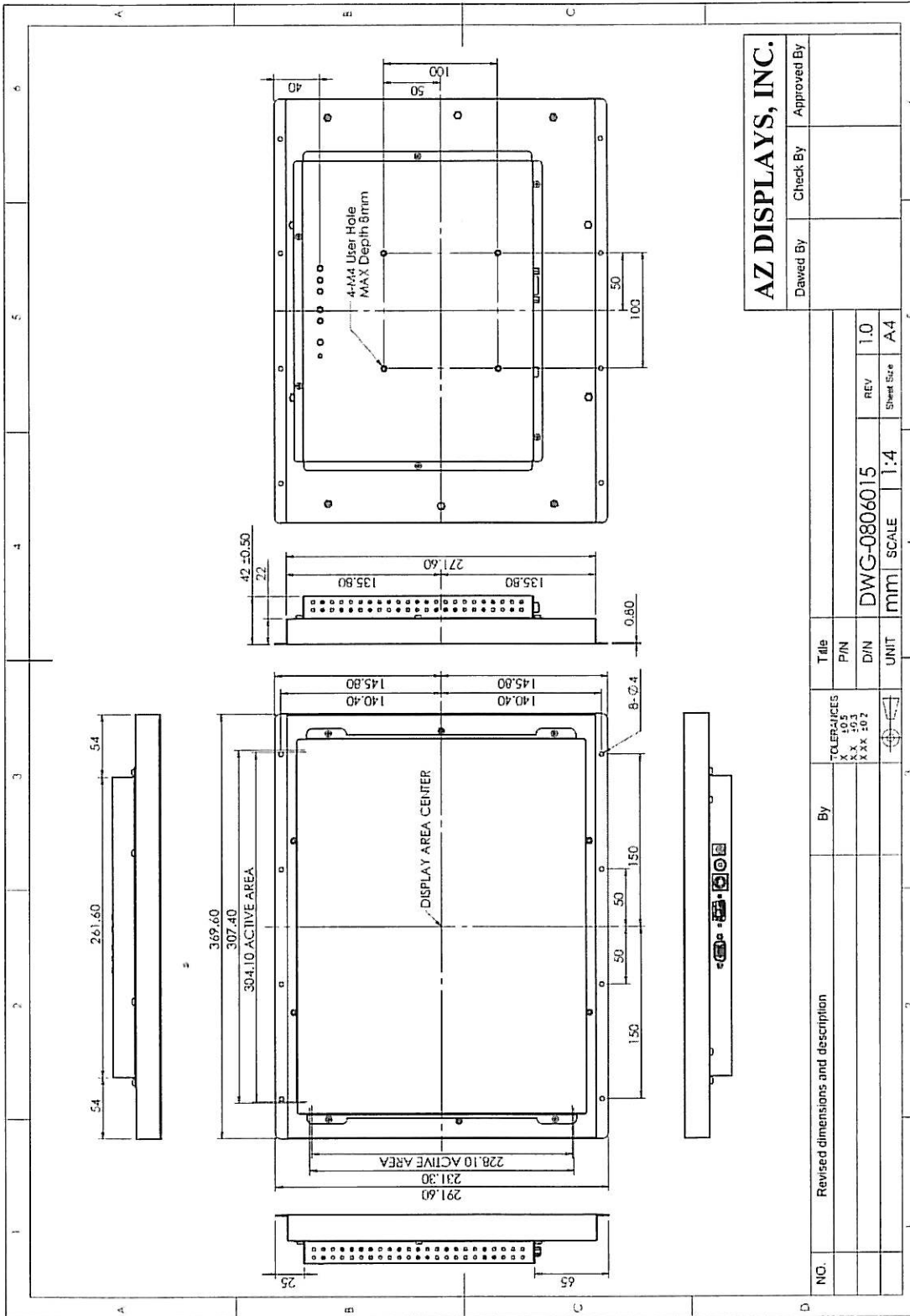
Parameter	AOM150X03-010R		AOM150X5U-010R	AOM150X5R-010R
CVBS	-	-	-	
S-Video	-	-	-	
VGA	XGA (1024x768)		XGA (1024x768)	XGA (1024x768)
Touch Panel Type	-	5W	Resistive	5W Resistive
Touch Screen Interface	-	USB		RS232
PMMA	©		-	-

5. VGA Input Format

	Mode	Family	Resolution	H-Freq. (KHz)		V-Freq. (KHz)	
1	Mode 1	PC	720x350	31.47	(+)	70.1	(-)
2	Mode 2	PC	720x400	31.47	(-)	70.1	(+)
3	Mode 3	PC	640x480	31.47	(-)	59.9	(-)
4	Mode 4	VESA	640x480	37.86	(-)	72.8	(-)
5	Mode 5	VESA	640x480	37.50	(-)	75.0	(-)
6	Mode 6	VESA	640x480	43.27	(-)	85.0	(-)
7	Mode 7	VESA	800x600	35.16	(+)	56.3	(+)
8	Mode 8	VESA	800x600	37.88	(+)	60.3	(+)
9	Mode 9	VESA	800x600	48.08	(+)	72.2	(+)
10	Mode 10	VESA	800x600	46.88	(+)	75.0	(+)
11	Mode 11	VESA	800x600	53.67	(+)	85.1	(+)
12	Mode 12	VESA	1024x768	48.36	(-)	60.0	(-)
13	Mode 13	VESA	1024x768	56.48	(-)	70.1	(-)
14	Mode 14	VESA	1024x768	60.02	(+)	75.0	(+)
15	Mode 15	VESA	1024x768	68.68	(+)	85.0	(+)
16	Mode 16	VESA	1280x1024	63.98	(+)	60.0	(+)

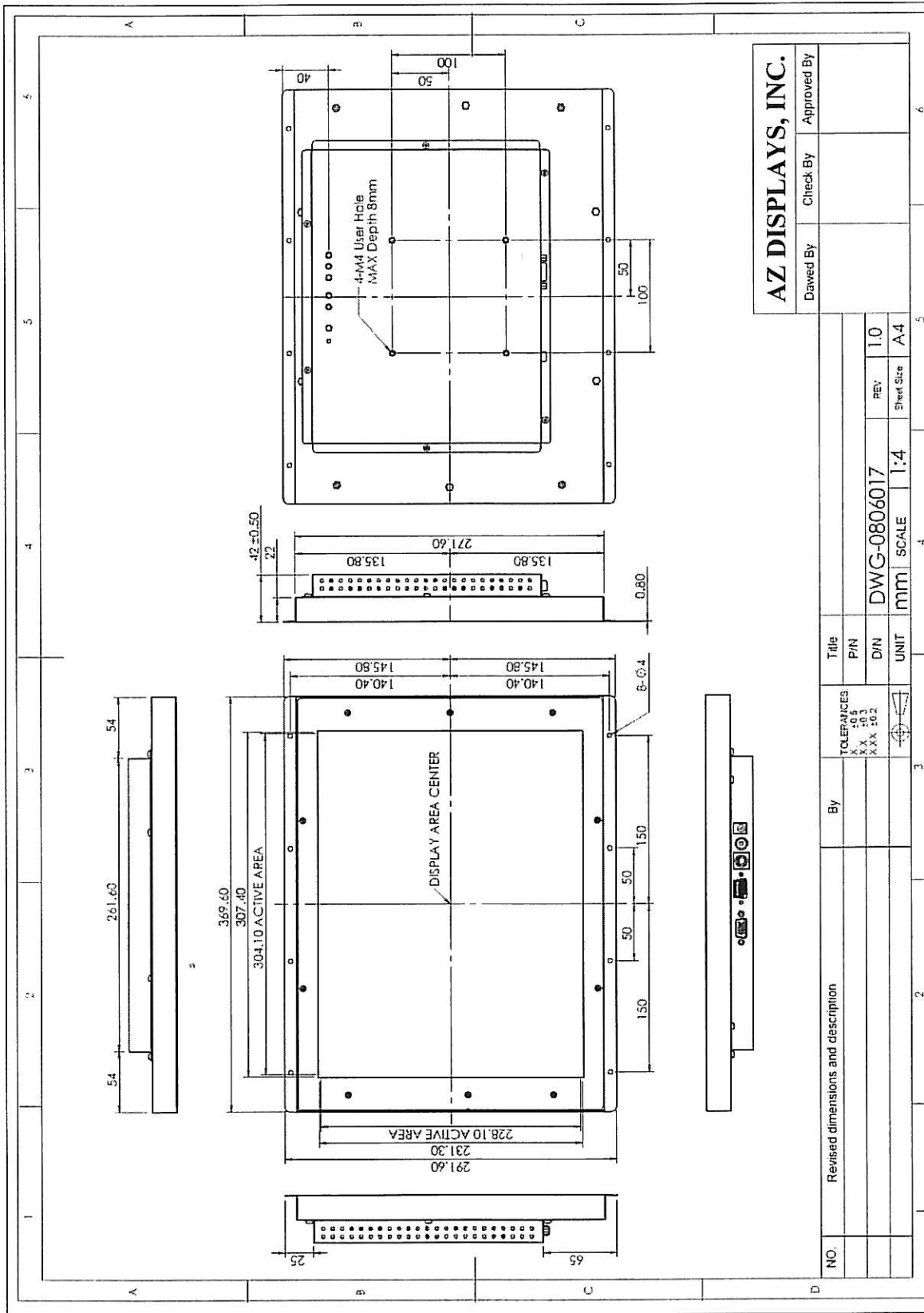
6. Mechanical Drawing

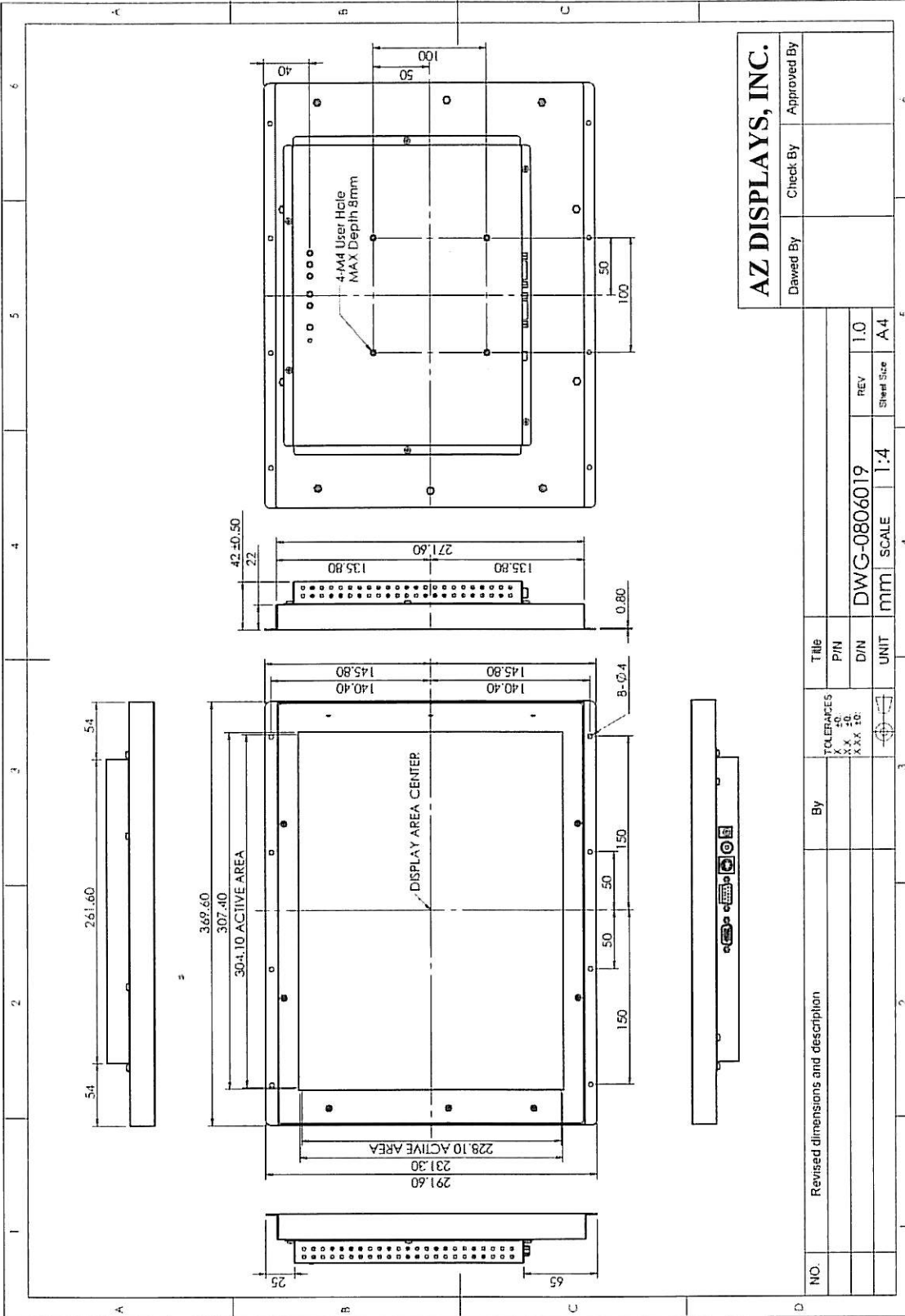
6.1 AOM150X03-000R

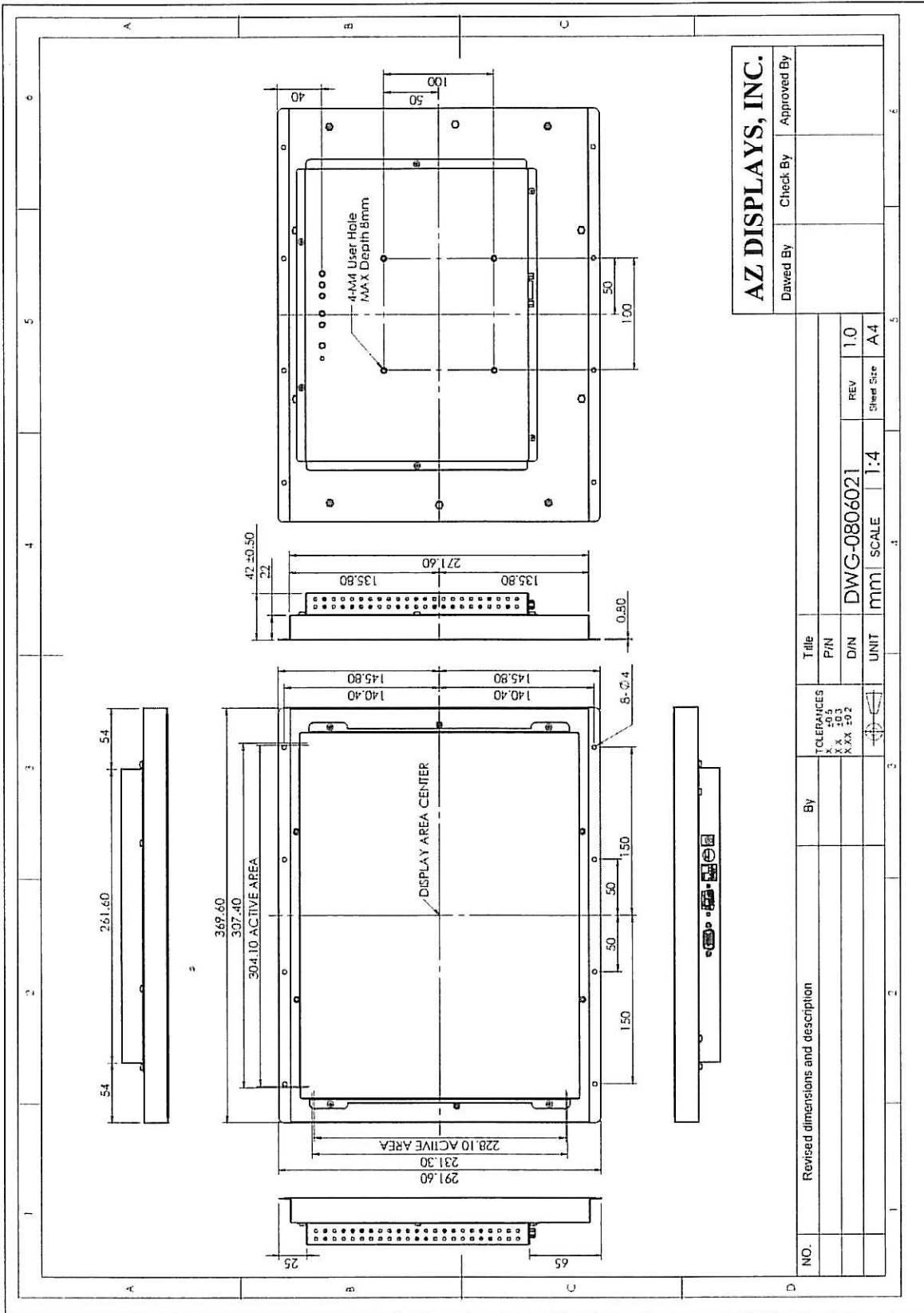


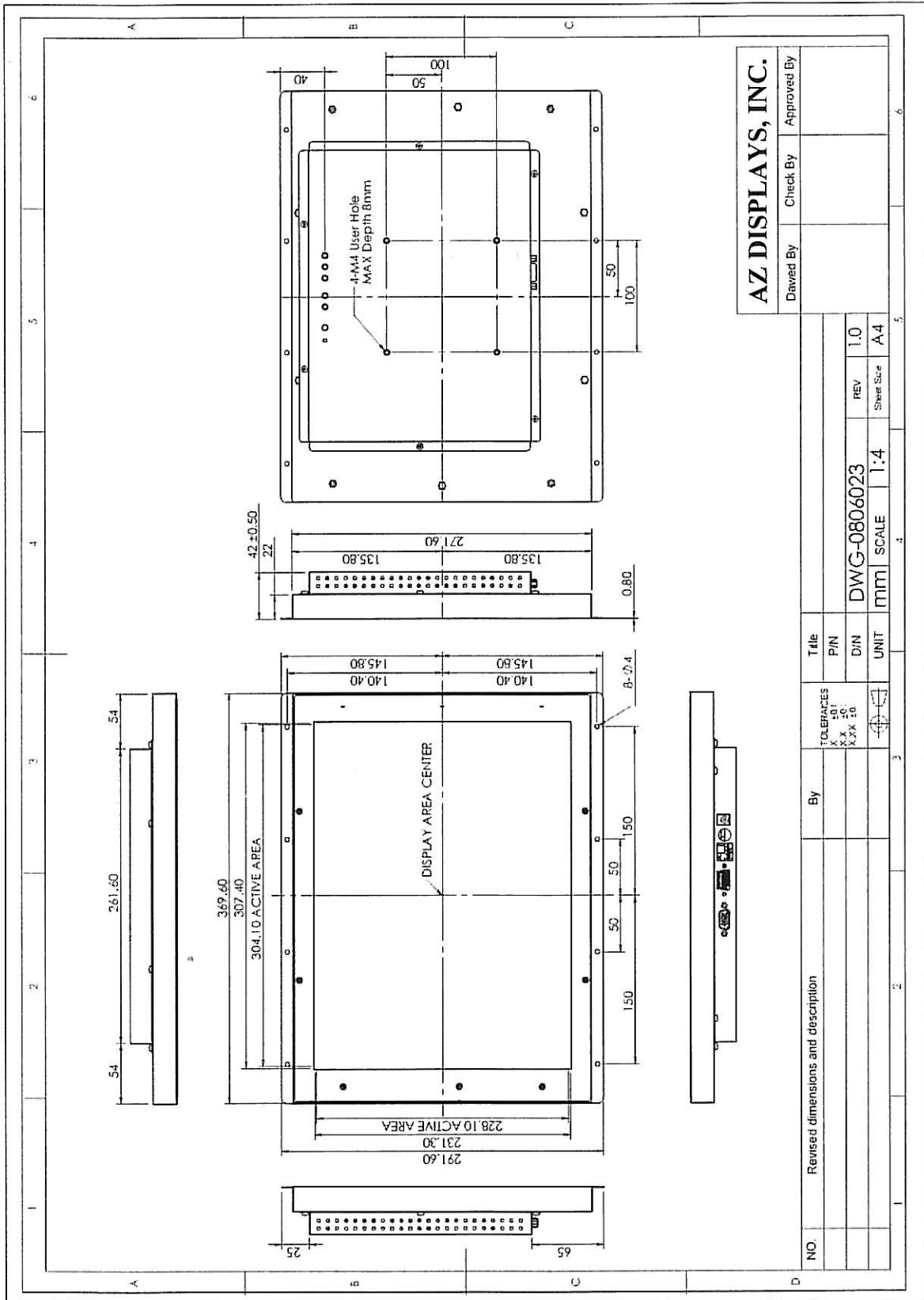
AZ DISPLAYS, INC.		Drawn By	Check By	Approved By

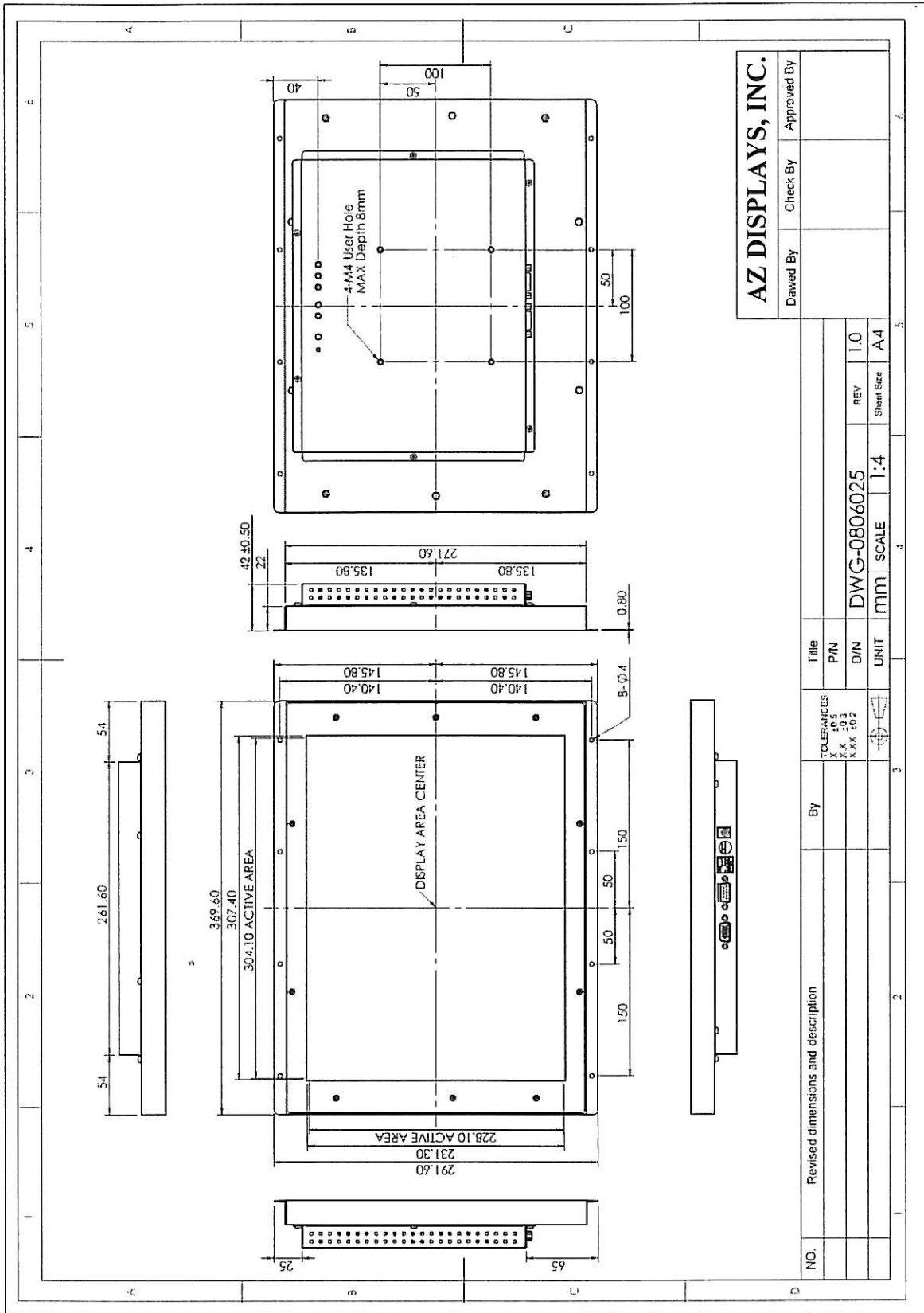
NO.	Revised dimensions and description	By	TITLE	PIN	REV	Sheet Size
			TOLERANCES	DIN	1.0	A4
			X 10.5	DWG-0806015	1.4	mm
			X X 10.3 X X 10.2	SCALE	1:4	UNIT











7. Packing List

Before you begin installing the Open Frame Monitor, please make sure that the following materials have been shipped:



A. AC to DC Adapter (100-240V_{AC} 50-60Hz or +12V_{DC} @ 3A)

B. Power Cord

C. Video Cable(AOM150X~~xx~~-000R Only)

D. S-Video Cable(AOM150X~~xx~~-000R Only)

E. VGA Cable

F. USB Cable(AOM150X5U Only)

G. RS-232 Cable(AOM150X5R Only)

H. Touch Screen Driver CD Disk(AOM150X5U &AOM150X5R Only) / User Manual

If any of these items are missing or damaged, contact your distributor or sales representative immediately.

8. Installing the Monitor

8.1 Power cable connection:

Connect the power cord to the AC outlet, and connect the power to the monitor through the AC/DC adapter.

8.2 VGA signal cable connection:

Plug one end of the 15-pin signal cable to the VGA connector at the rear of the PC system and the other end to the Open Frame Monitor.

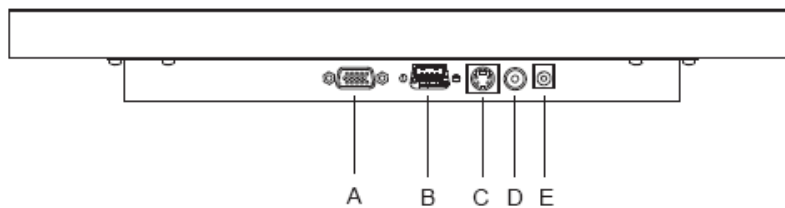
Secure the connectors with the screws on the cable connector at both ends.

8.3 Video / S-Video Cable connection:

If required, connect Video / S-Video Cable from the Open Frame Monitor to the DVD or CCD Camera.

8.4 Switch on the power:

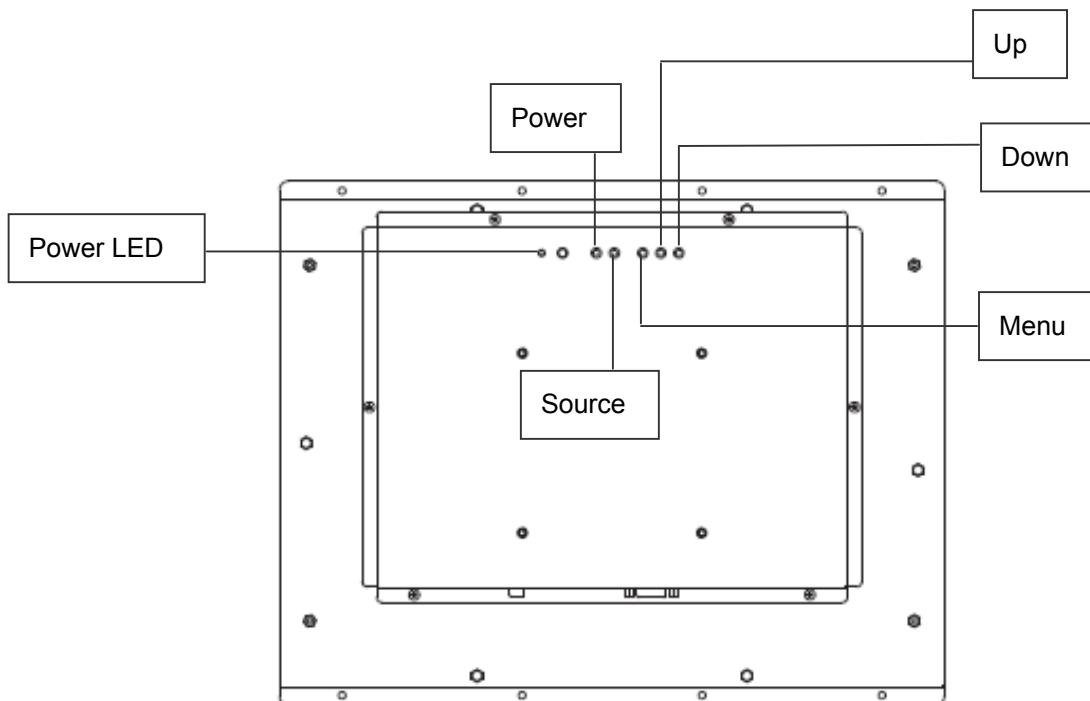
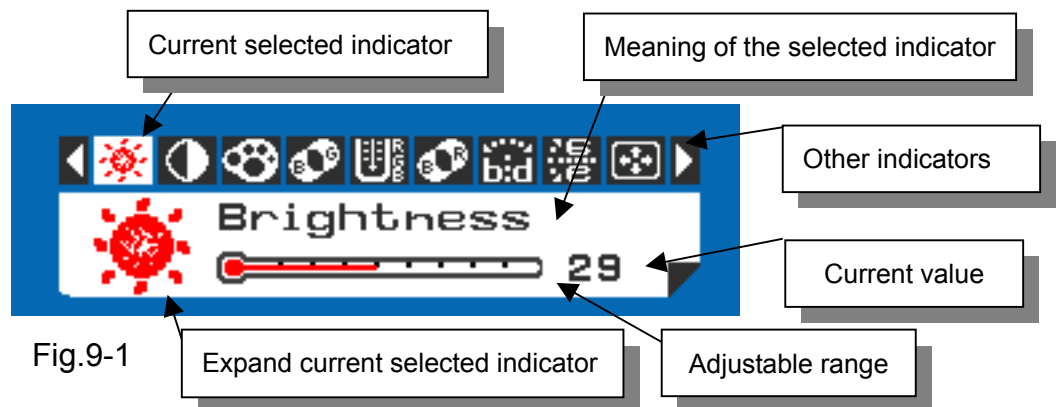
Switch on the power switch on the rear cover of the Open Frame Monitor.



- A. VGA D-sub 15 (Female)
- B. USB / RS-232 Port (For Controller)
- C. S-Video (Y/C Video) In
- D. Video (CVBS) In
- E. DC-In (+12V_{DC} The DC jack core is positive)

9. OSD Control

9.1 Menu Operation



Operations of key board :

1. To navigate the menu, press [MENU]. (Fig.9-1)
2. The indicator lighting up in white color is the selected adjustment item.
3. To Next Item of the menu, press [MENU] again.
4. The operations below are only available when "Menu" is started.
5. Press [UP] / [DOWN] to adjust the value of the selected item.

Overview of the menu :













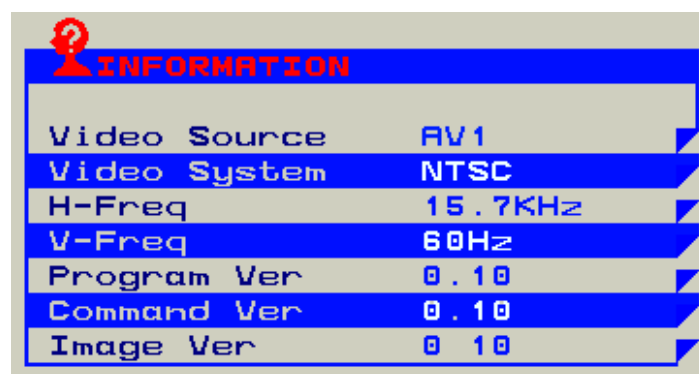
Indicator	Meaning	Adjustable range	For	Remark
	Brightness	0 64	AV / S-Video / VGA	Adjust-Bar
	Contrast	0 64	AV / S-Video / VGA	Adjust-Bar
	Color	0 64	AV / S-Video	Adjust-Bar
	Tint	0 32	AV / S-Video	Adjust-Bar
	Sharpness	0 16	AV / S-Video	Adjust-Bar
	Color Tone	Normal / Warm / Cool	AV / S-Video / VGA	
	H-Position	-10 +10	VGA	Balance-Bar
	V-Position	-10 +10	VGA	Balance-Bar
	Auto		VGA	
	Scale	Full / 4:3	AV / VGA	
	Information		AV /VGA	Fig.9-2
	Memory Recall		AV / VGA	

Fig.9-2



9.2 Operations

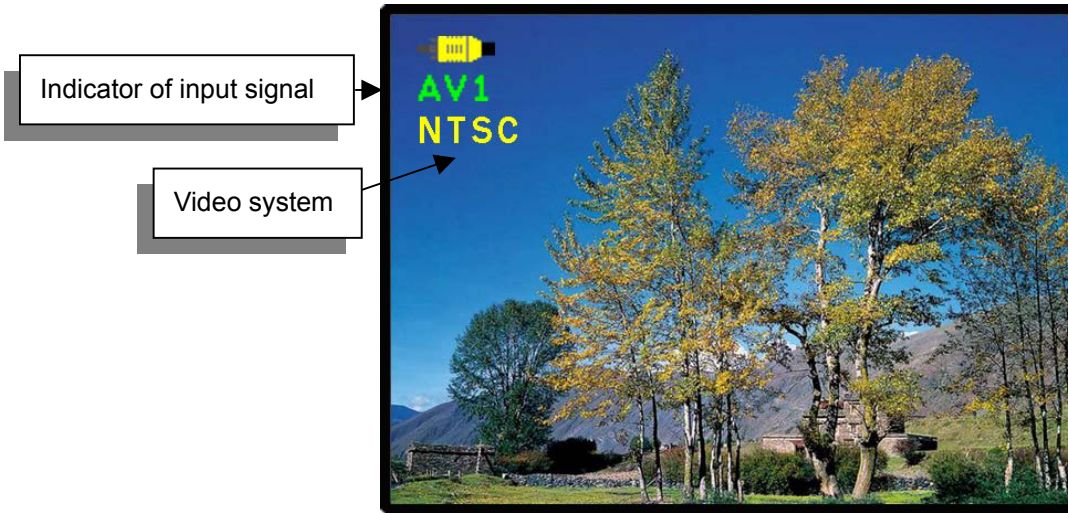





Fig.9-3

[Power] : Monitor power on / off

[Source] : Input signal switch

Overview of input signals :

Indicator	Input signal	Interface	Video system
	AV1	Composite	NTSC / PAL / SECAM
	S-Video1	Y/C	NTSC / PAL / SECAM
	VGA	Analog RGB	640x480_60 / 800x600_60 / 1024x768_60 / 1280x1024_60

10. Trouble Shooting

If experiencing trouble with the monitor, or it fails to operate correctly, please refer to the following instructions before calling for repairs.

Condition	Check	Point
1. The picture does not appear	<ul style="list-style-type: none"> ● Check to see that all the I/O and power cables is firmly seated in the socket. ● Check the Power LED is Lighting When the monitor was turned ON. ● Check if the brightness control is at the appropriate position, not at the minimum. 	
2. The screen is not synchronized	<ul style="list-style-type: none"> ● Check if the I/O signal cable is firmly seated in the socket. ● Check if the output level matches the input level. ● Make sure the signal timings of the computer system are within the specification of the monitor. 	
3. The position of the screen is not in the center	<ul style="list-style-type: none"> ● Adjust the H-position, and V-position, or perform the auto adjustment Or Memory Recall. 	
4. The screen is too bright (too dark).	<ul style="list-style-type: none"> ● Check if the brightness or contrast control is at the appropriate position, not at the Maximum (Minimum). 	
5. The Screen is shaking or waving	<ul style="list-style-type: none"> ● Press the Auto adjustment control to adjust. Moving all objects which emit a magnetic field such as motor or transformer, away from the monitor. Check if the specific voltage is applied. ● Check if the signal timing of the computer system is within the specification of monitor. 	

If you are unable to correct the fault by using this chart, stop using your monitor and contact us.