



**CHENMKO ENTERPRISE CO.,LTD**

**SURFACE MOUNT**

**SCHOTTKY BARRIER DIODE**

**VOLTAGE 40 Volts CURRENT 0.25 Ampere**

**CH025S-40PT**

*Lead free devices*

#### APPLICATION

- \* High speed switching

#### FEATURE

- \* Small surface mounting type. (SC-79/SOD-523)
- \* Low VF and low IR
- \* High speed. (TRR=10nSec Typ.)

#### CONSTRUCTION

- \* Silicon epitaxial planar

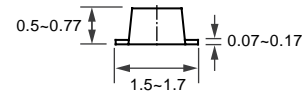
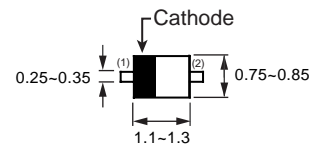
#### MARKING

- \* H

#### CIRCUIT



**SC-79/SOD-523**



Dimensions in millimeters

**SC-79/SOD-523**

#### MAXIMUM RATINGS ( At TA = 25°C unless otherwise noted )

RATINGS	SYMBOL	CH025S-40PT	UNITS
Maximum Recurrent Peak Reverse Voltage	VRRM	40	Volts
Maximum RMS Voltage	VRMS	28	Volts
Maximum DC Blocking Voltage	VDC	40	Volts
Maximum Average Forward Rectified Current	IFM	0.25	Amps
Peak Forward Surge Current at 1.0 Sec single half sine-wave	IFSM	1.0	Amps
Typical Junction Capacitance between Terminal (Note 1)	CJ	50	pF
Power Dissipation	Pd	150	mW
Maximum Operating Storage Temperature Range	TJ,TSTG	-40 to +125	°C

#### ELECTRICAL CHARACTERISTICS ( At TA = 25°C unless otherwise noted )

CHARACTERISTICS	SYMBOL	CH025S-40PT	UNITS
Maximum Instantaneous Forward Voltage @IF=20mA @IF=200mA	VF	370 600	mVolts
Maximum Average Reverse Current @VR=10V @VR=30V	IR	1.0 5.0	uAmps

NOTES : 1. Measured at 1.0 MHz and applied reverse voltage of 0 volts.  
2. Device mounted on FR-4 by 1 inch X 0.85 inch X 0.062 inch  
3. ESD sensitive product handling required.

2004-06

# RATING CHARACTERISTIC CURVES (CH025S-40PT)

FIG. 1 - TYPICAL POWER DERATING CURVE

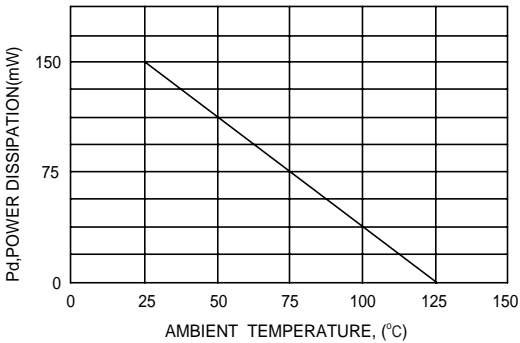


FIG. 2 - FORWARD CHARACTERISTICS

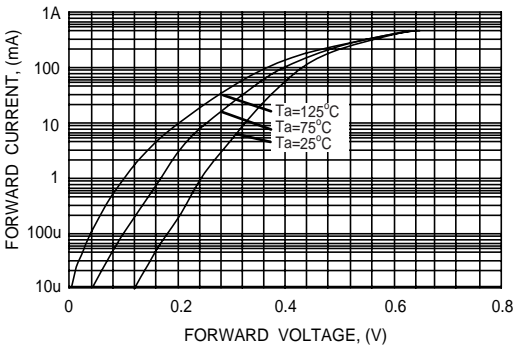


FIG. 3 - REVERSE CHARACTERISTICS

