



U74AHC02

CMOS IC

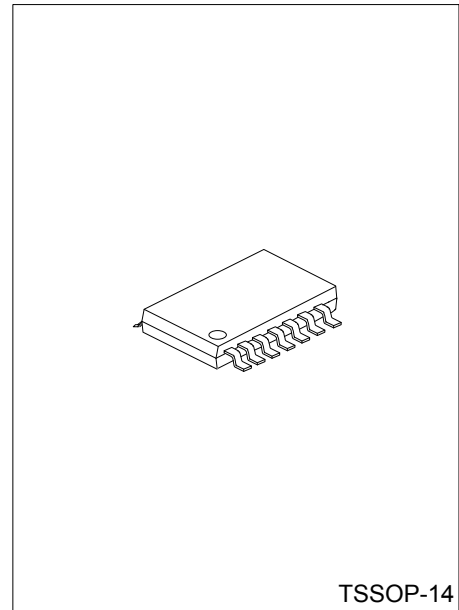
2-INPUT NOR GATE

DESCRIPTION

The UTC **U74AHC02** are independent 2-input NOR gates which provides the function $Y = \overline{A+B}$.

FEATURES

- * Operation Voltage Range: 2.0~5.5V
- * Low Power Dissipation
- * High Noise Immunity
- * Balanced Propagation Delays
- * Halogen Free

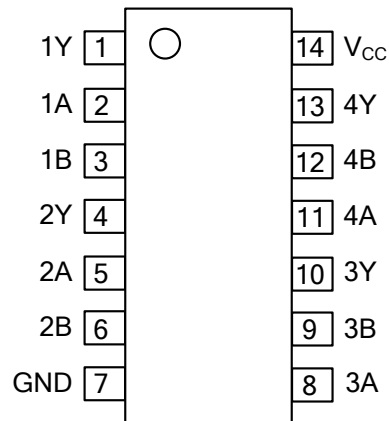


ORDERING INFORMATION

Ordering Number	Package	Packing
U74AHC02G-P14-R	TSSOP-14	Tape Reel

U74AHC02G-P14-R	(1) Packing Type (2) Package Type (3) Halogen Free	(1) R: Tape Reel (2) P14: TSSOP-14 (3) G: Halogen Free
-----------------	----------------------------------------------------------	--------------------------------------------------------------

■ PIN CONFIGURATION



■ FUNCTION TABLE

INPUT		OUTPUT
A	B	Y
L	L	H
L	H	L
H	L	L
H	H	L

■ LOGIC DIAGRAM (positive logic)



IEC logic symbol

■ ABSOLUTE MAXIMUM RATINGS (unless otherwise specified)

PARAMETER	SYMBOL	RATINGS	UNIT
Supply Voltage	V _{CC}	-0.5~+7	V
Input Voltage	V _{IN}	-0.5~+7	V
Output Voltage	V _{OUT}	-0.5~V _{CC} +0.5	V
Input Clamp Current	I _{IK}	-20	mA
Output Clamp Current	I _{OK}	±20	mA
Continuous Output Current	I _{OUT}	±25	mA
V _{CC} or GND Current	I _{CC}	±50	mA
Storage Temperature	T _{STG}	-65 ~ + 150	°C

Notes: 1. Absolute maximum ratings are those values beyond which the device could be permanently damaged.

Absolute maximum ratings are stress ratings only and functional device operation is not implied.

2. The input and output voltage ratings may be exceeded if the input and output current ratings are observed.

■ RECOMMENDED OPERATING CONDITIONS

PARAMETER	SYMBOL	TEST CONDITIONS	MIN	TYP	MAX	UNIT	
Supply Voltage	V _{CC}		2		5.5	V	
Input Voltage	V _{IN}		0		5.5	V	
Output Voltage	V _{OUT}	High or low state	0		V _{CC}	V	
Input Voltage	High	V _{IH}	V _{CC} =2V	1.5		V	
			V _{CC} =3V	2.1		V	
			V _{CC} =5.5V	3.85		V	
	Low	V _{IL}	V _{CC} =2V			0.5	V
			V _{CC} =3V			0.9	V
			V _{CC} =5.5V			1.65	V
Output Current	High	I _{OH}	V _{CC} =2V			-50	μA
			V _{CC} =3.3V ± 0.3V			-4	mA
			V _{CC} =5V ± 0.5V			-8	mA
	Low	I _{OL}	V _{CC} =2V			50	μA
			V _{CC} =3.3V ± 0.3V			4	mA
			V _{CC} =5V ± 0.5V			8	mA
Input Rise or Fall Times	$\frac{\Delta t}{\Delta V}$	V _{CC} =3.3V ± 0.3V			100	ns/V	
		V _{CC} =5V ± 0.5V			20	ns/V	
Operating Temperature	T _A		-40		85	°C	

■ ELECTRICAL CHARACTERISTICS (Ta=25°C , unless otherwise specified)

PARAMETER	SYMBOL	TEST CONDITIONS	MIN	TYP	MAX	UNIT	
Output Voltage	High	V _{OH}	V _{CC} =2.0V, I _{OH} =-50μA	1.9	2.0		V
			V _{CC} =3.0V, I _{OH} =-50μA	2.9	3.0		V
			V _{CC} =4.5V, I _{OH} =-50μA	4.4	4.5		V
			V _{CC} =3.0V, I _{OH} =-4mA	2.58			V
			V _{CC} =4.5V, I _{OH} =-8mA	3.94			V
	Low	V _{OL}	V _{CC} =2.0V, I _{OL} =50μA			0.1	V
			V _{CC} =3.0V, I _{OL} =50μA			0.1	V
			V _{CC} =4.5V, I _{OL} =50μA			0.1	V
			V _{CC} =3.0V, I _{OL} =4mA			0.36	V
			V _{CC} =4.5V, I _{OL} =8mA			0.36	V
Input Leakage Current	I _{I(LEAK)}	V _{CC} =0~5.5V, V _{IN} =5.5V or GND			±0.1	μA	
Quiescent Supply Current	I _Q	V _{CC} =5.5V, V _{IN} =V _{CC} or GND, I _{OUT} =0			2	μA	
Input Capacitance	C _{IN}	V _{CC} =5.0V, V _{IN} =V _{CC} or GND		4	10	pF	

Note: All unused inputs of the device must be held at VCC or GND to ensure proper device operation.

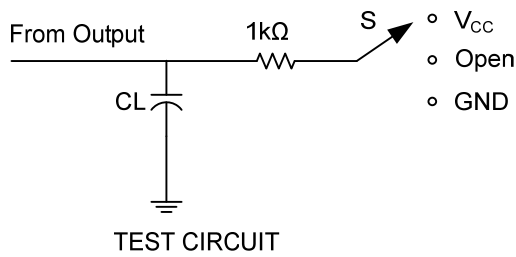
■ SWITCHING CHARACTERISTICS (see TEST CIRCUIT AND WAVEFORMS)

PARAMETER	SYMBOL	TEST CONDITIONS	MIN	TYP	MAX	UNIT
Propagation delay from input (A or B) to output(Y)	t_{PLH}/t_{PHL}	$V_{CC}=3.3V\pm 0.3V, C_L=15pF$		5.6	7.9	ns
		$V_{CC}=3.3V\pm 0.3V, C_L=50pF$		8.1	11.4	ns
	t_{PLH}/t_{PHL}	$V_{CC}=5.0V\pm 0.5V, C_L=15pF$		3.6	5.5	ns
		$V_{CC}=5.0V\pm 0.5V, C_L=50pF$		5.1	7.5	ns

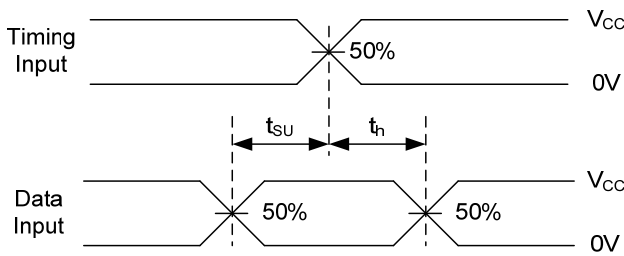
■ OPERATING CHARACTERISTICS ($V_{CC}=5V, T_a=25^\circ C$)

PARAMETER	SYMBOL	TEST CONDITIONS	MIN	TYP	MAX	UNIT
Power Dissipation Capacitance	Cpd	No load, $f=1MHz$		15		pF

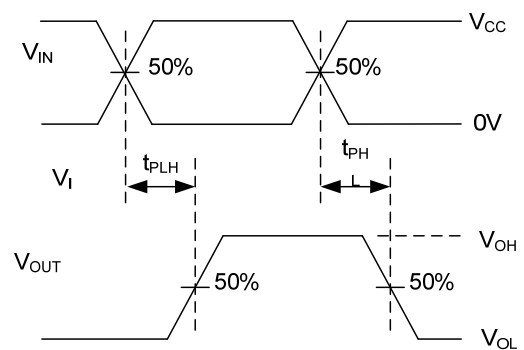
■ TEST CIRCUIT AND WAVEFORMS



TEST	S
t _{PLH} /t _{PHL}	Open
t _{PHZ} /t _{PZH}	GND
t _{PLZ} /t _{PZL}	V _{CC}



SETUP TIME AND HOLD TIME



PROPAGATION DELAY TIMES

Note: CL includes probe and jig capacitance.

PRR ≤ 1MHz, Z_O = 50Ω, t_R ≤ 3ns, t_F ≤ 3ns.

UTC assumes no responsibility for equipment failures that result from using products at values that exceed, even momentarily, rated values (such as maximum ratings, operating condition ranges, or other parameters) listed in products specifications of any and all UTC products described or contained herein. UTC products are not designed for use in life support appliances, devices or systems where malfunction of these products can be reasonably expected to result in personal injury. Reproduction in whole or in part is prohibited without the prior written consent of the copyright owner. The information presented in this document does not form part of any quotation or contract, is believed to be accurate and reliable and may be changed without notice.