



Data Sheet



Product Category: IF SAW Filter

Part Number  
807-IF183.6M-APackage  
7.0 x 5.0 SMDApplication  
Mobile CommunicationLast Modified  
May 22 2003

## TYPE :

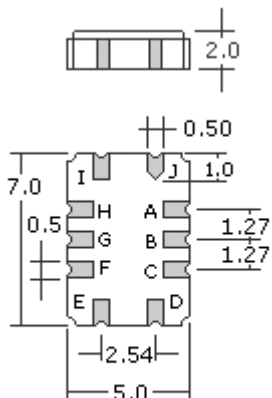
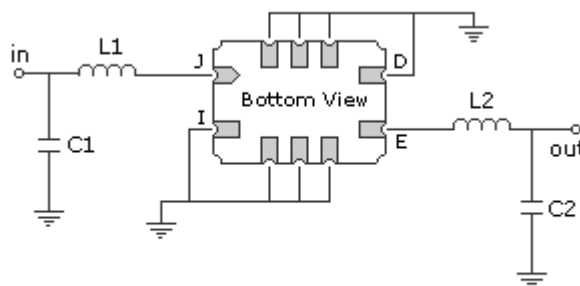
183.6 MHz Bandpass Filter  
1.23 MHz Bandwidth

## PART NUMBER :

**807-IF183.6M-A****OPERATING CONDITIONS / ELECTRICAL CHARACTERISTICS**

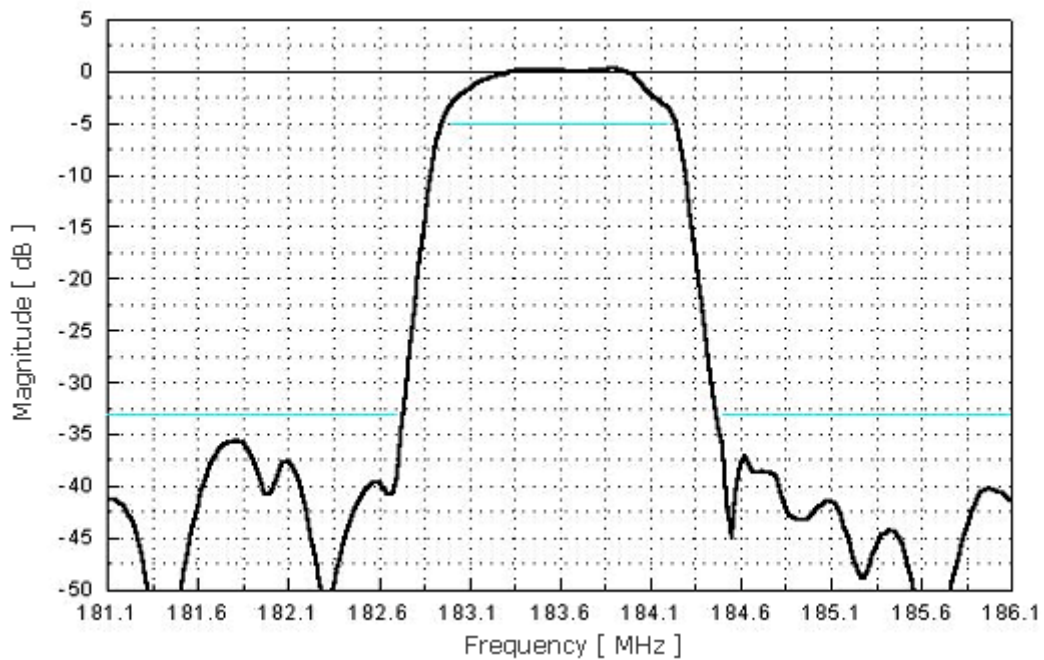
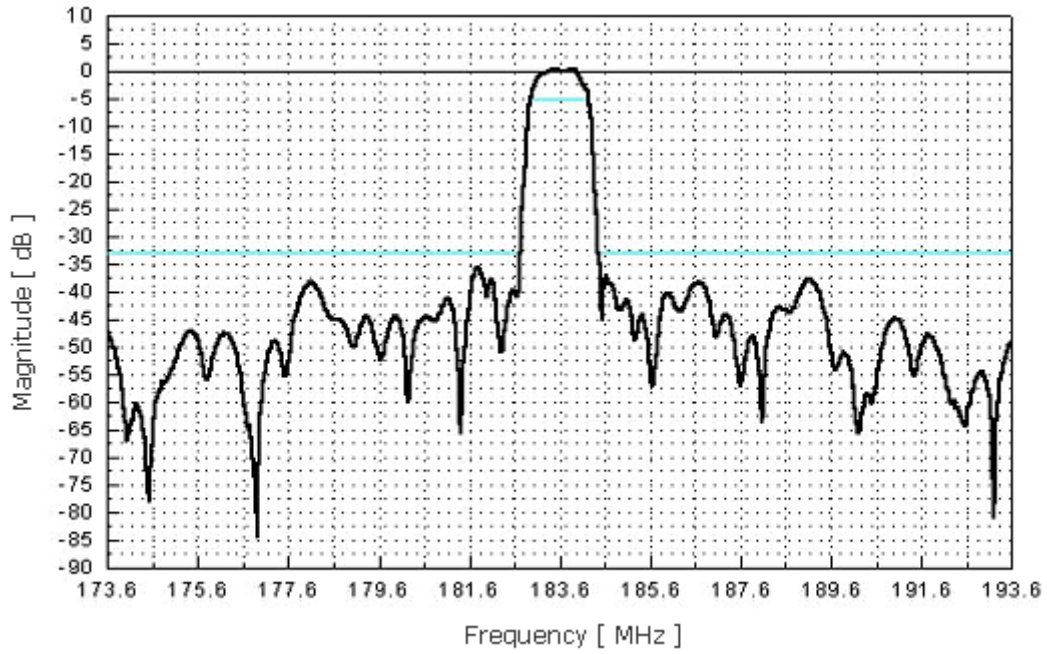
PARAMETERS	Minimum	Typical	Maximum	Units
Center Frequency	-	183.6	-	MHz
Insertion Loss	-	7.0	10.0	dB
Attenuation at Fo -615 KHz	-	3.8	5	dB
Attenuation at Fo -615 K Hz	-	3.9	5	dB
Attenuation at Fo -900 KHz	33	38	-	dB
Attenuation at Fo +900 KHz	33	37	-	dB
Attenuation at Fo $\pm$ 1.25 MHz	35	42	-	dB
Attenuation at Fo $\pm$ 1.7 MHz	33	38	-	dB
Attenuation at Fo $\pm$ 2.05 MHz	35	45	-	dB
Input / Output Impedance	-	50	-	ohm
Passband Ripple at Fo $\pm$ 0.3 MHz	-	0.5	1.2	dB
Ultimate Rejection	35	40	-	dB
Substrate Material	-	Quartz	-	-
Phase Linearity at Fo $\pm$ 0.3 MHz	-	1.5	3.0	$^{\circ}$ rms
Operating Temperature	-30	-	+80	$^{\circ}$ C

\* Custom SAW IF Filters available. Contact Oscilent for assistance.

**PACKAGE OUTLINE** (mm)**TEST FIXTURE**

L1 = 82nH                      L2 = 68nH  
 C1 = 43pF                      C2 = 43pF  
 Source/Load Impedance = 50 ohms

**FREQUENCY RESPONSE**



**Oscilent Corporation** - CALL **949.252.0522**

**Part No.:** 807-IF183.6M-A

17962 Sky Park Circle, Building D, Irvine, CA 92614, USA  
Fax: 949.252.0599, E-Mail: Sales@Oscilent.com

Crystal Oscillators | Quartz Crystal | TCXO | VCXO | IF SAW Filter | RF SAW Filter | Ceramic Resonator  
Crystal Filter | Ceramic Filter | SAW Filter / SAW Devices | Site Map