



**Data Sheet**



Product Category: IF SAW Filter

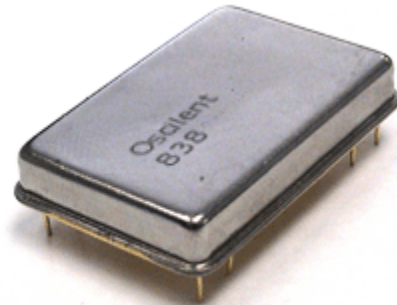
Part Number	Package	Application	Last Modified
838-IF42.384M-A	38.0 x 25.0 Thru Hole	Base Station & Repeater	Jan. 01, 2007

TYPE :

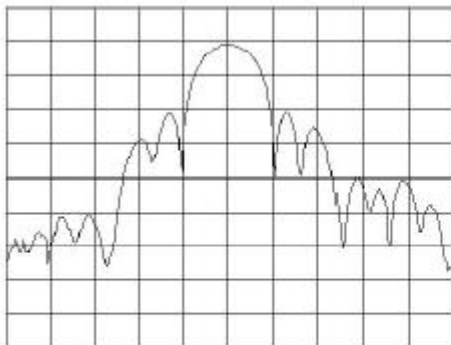
42.384 MHz Bandpass Filter  
200 kHz Bandwidth

PART NUMBER :

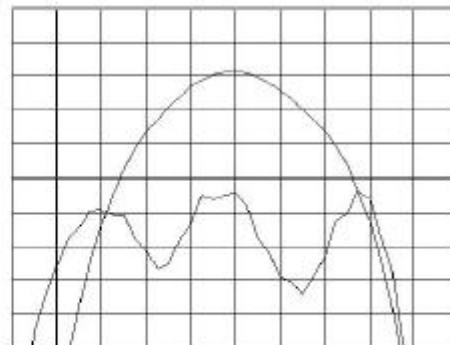
**838-IF42.384M-A**



**FREQUENCY CHARACTERISTICS**



Horizontal : 0.2 MHz/Div  
Vertical : 10 dB/Div



Horizontal : 0.04 MHz/Div  
Vertical : 1 dB/Div  
Vertical : 100 ns/Div

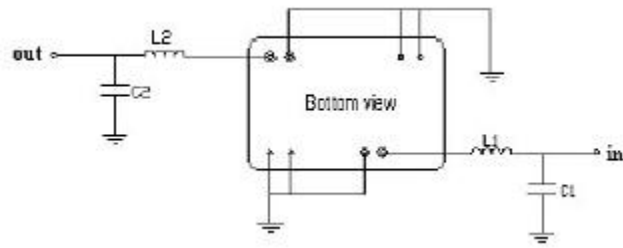
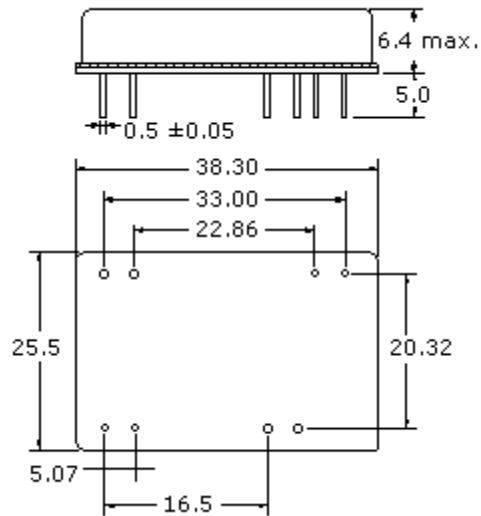
**OPERATING CONDITIONS / ELECTRICAL CHARACTERISTICS**

PARAMETERS	Minimum	Typical	Maximum	Units
Center Frequency	42.374	42.384	42.394	MHz
Insertion Loss	-	15.0	17.0	dB
1dB Bandwidth	0.12	0.135	-	MHz
3dB Bandwidth	0.20	0.215	-	MHz
40dB Bandwidth	-	0.405	0.415	MHz
Passband Ripple	-	1.0	1.5	dB
Group Delay Variation	-	500	1000	nsec
Absolute Delay	-	5.5	-	µsec
Substrate Material	-	Qz	-	-
Ambient Temperature	-	25	-	°C

\* Custom SAW IF Filters available. Contact Oscilent for assistance.

**PACKAGE OUTLINE** (mm)

**TEST FIXTURE**



L1 = 440nH  
 L2 = 640nH  
 C1 = 47pF  
 C2 = 47pF  
 Source/Load Impedance = 50 ohm

**Oscilent Corporation** - CALL **949.252.0522**

**Part No.:** 838-IF42.384M-A

18195 East McDermott Street, Building D, Irvine, CA 92614, USA  
 Fax: 949.252.0599, E-Mail: Sales@Oscilent.com