

## Features

- Frequency Range: 1200~1500MHz
- Standard Hermetic Package
- Operating Temperature Range: -55°C ~ +85°C

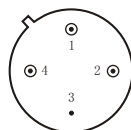
## Specifications (50 Ω, V<sub>CC</sub> = +12V, T<sub>A</sub> = -55°C ~ +85°C)

Parameter	Symbol	Unit	Guaranteed	Typical
Frequency Range	f <sub>L</sub> ~f <sub>H</sub>	MHz	1200~1500	1200~1500
Gain	G <sub>p</sub>	dB	≥23.0	28.0
Gain Flatness	ΔG <sub>p</sub>	dB	--	±0.5
Noise Figure	F <sub>n</sub>	dB	≤1.35 Δ	1.10
Input VSWR	VSWR <sub>i</sub>	--	≤2.0:1	1.5
Output VSWR	VSWR <sub>o</sub>	--	≤2.0:1	1.5
Output Power @ 1dB Compression	P-1	dBm	≥11.0 * Δ	12.0
DC Current	I <sub>CC</sub>	mA	--	65

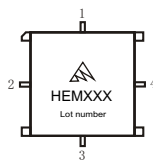
“\*”f = 1400MHz; “Δ” T<sub>A</sub> = 24 ± 1°C;

## Maximum Rating

DC Voltage : +13.5VDC  
RF Input: +10dBm  
Storage Temp: +125°C



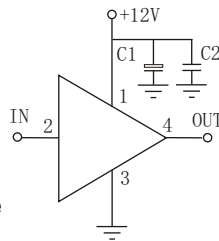
TO-8D



SMD-8D

## Application Notes

1. Typical application shown as right, C<sub>1</sub> = 10~33 μF ; C<sub>2</sub> = 3300~6800pF;
2. See assembly section for mounting information
3. Connectorized package(SMA-1) available
4. ESD observe handling precautions



## Typical Curves

