

PIC-M072031035 Bonded Permanent Magnet

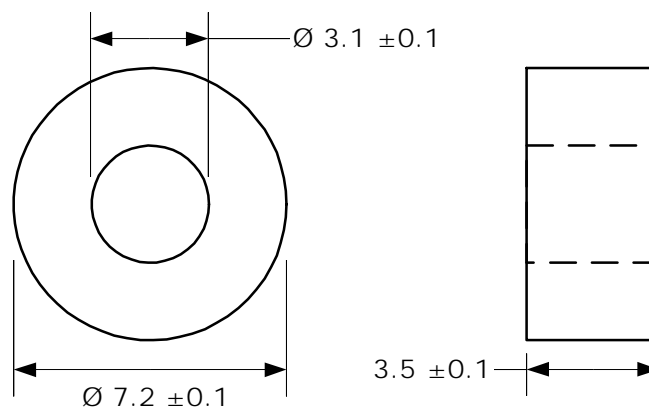
Data

Material	NdFeB, bonded	
Orientation	axially	
Remanence Br	mT	500
Coercivity HcB	kA/m	305
Coercivity HcJ	kA/m	630
Energy Product (BH) max.	kJ/m ³	39.6
Magnetic Moment M	x10 ⁻⁵ Vs cm	0.52
Operating Temperature max.	°C	100
Temperature Coefficient Tk(Br)	%/°C	-0.11
Density	g/cm ³	4.8

Nominal values unless otherwise specified

Dimensions

in mm



Customized types available.