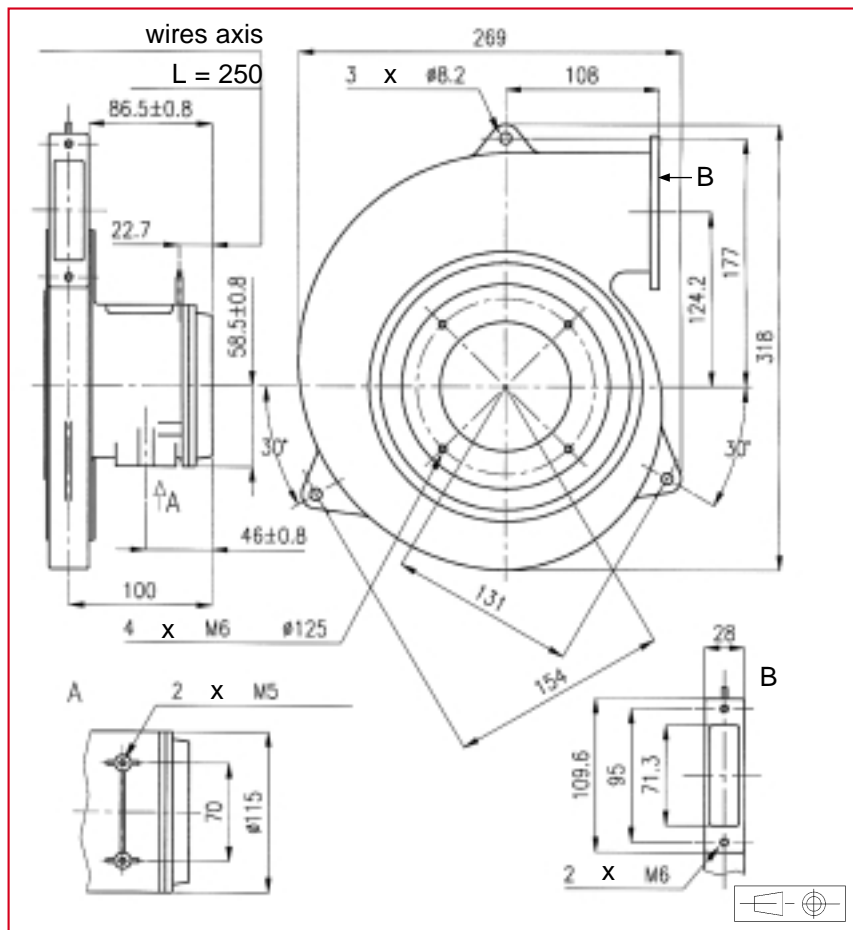


269 x 318 x 118 mm

ETRI®

AC Centrifugal Blowers

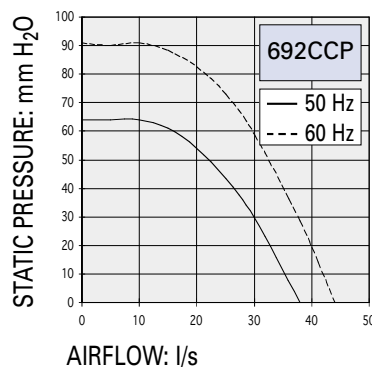


Approvals

GAM T1 LISTED

Life expectancy

L-10 LIFE AT 40°C:
25 000 hours



AC Motor

Housing material: aluminium
Wheel material: plastic
Weight: 4,75 kg
Bearing system: ball bearings

Connection : flying leads

Available with:

- safety switch

Part number	Nominal voltage	Airflow	Noise level	Nominal speed	Frequency	Phases	Capacitor (not included)	Input power	Nominal current	Starting current	Operating temperature	
	V										l/s	dB(A)
692CCP016DC13	220	38	68	2850	50	3		67	350	1750	- 10	70
	380	38	68	2850	50	3		67	200	1000	- 10	70
	220	44	73	3350	60	3		88	310	1650	- 10	70
	380	44	73	3350	60	3		88	180	950	- 10	70
	220	38	68	2850	50	1	4,7	65	350	1500	- 10	70
	380	38	68	2850	50	1	1,47	65	200	900	- 10	70
	220	44	73	3350	60	1	4,7	92	420	1400	- 10	70
	380	44	73	3350	60	1	1,47	92	240	800	- 10	70

Additional versions:

Salt spray protected - shock and vibration protected - marine specifications - wide temperature range

Accessories:

See pages: 157, 160 and 163